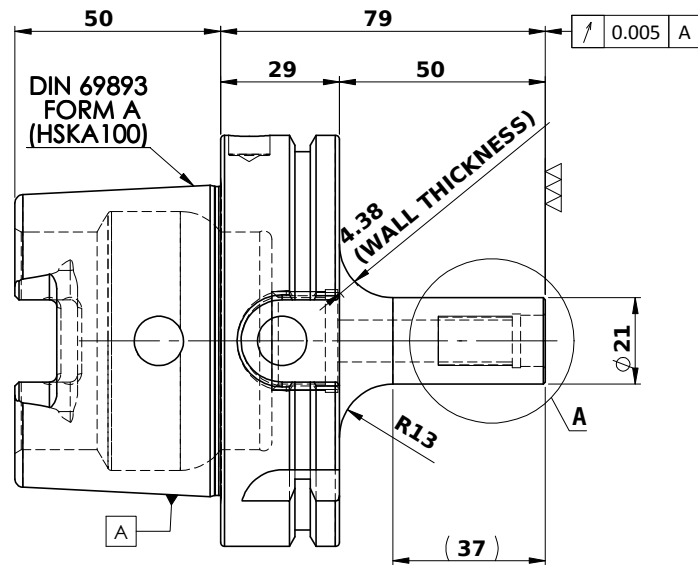
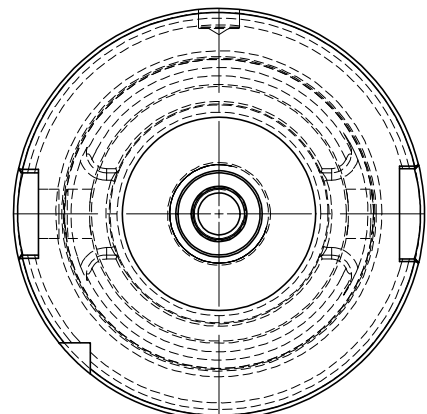
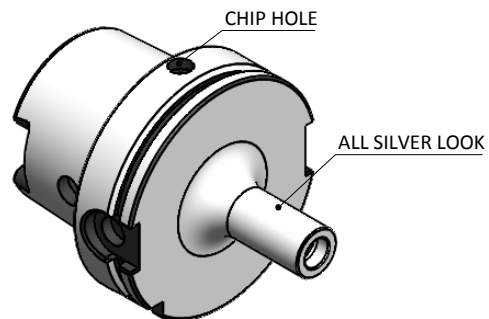


5	6	7	8
Rev.No.	Ch.Lef	Alterations	Date

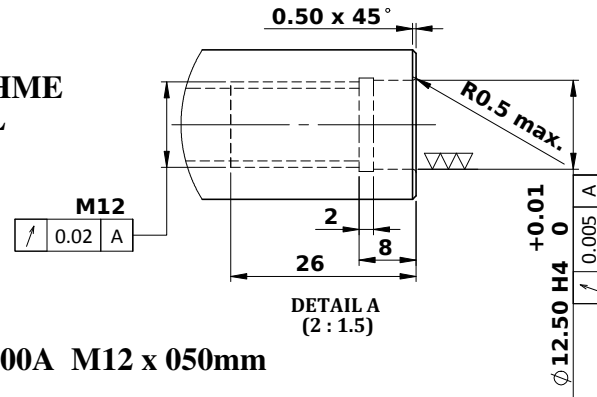
All Dimensions are in MM



LABEL:-

2002385.1200
 EINSCHRAUBFRÄSERAUFNAHME
 SCREW-ON HOLDER ZYL/CYL
 DIN 69893 A HSK100A
 ESS M12 x 050 mm x 079 mm
 G2,5 / 25000 U / MIN

MARKING:- DIN 69893 A HSK100A M12 x 050mm
 G2,5 25000 U/MIN



NOTE:
 BALANCING 2.5 G @ 25000 RPM
 WEIGHT : 2.1Kg

	μ m	0.012	0.025	0.05	0.1	0.2	0.4	0.8	1.6	3.2	6.3	12.5	25	50			
GRADES		N1	N2	N3	N4	N5	N6	N7	N8	N9	N10	N11	N12				
SYMBOLS		▽▽▽	▽▽	▽	▽	▽	▽	▽	▽	▽	▽	▽	▽	~			
TOLERANCE	MATERIALS:	2019	NAME	DATE	2002385.1200												
FREE DIMENSIONS	16MnCr5	DRAWN	AMK	30/04													
TOLERANCE		CHECKED	RVL	30/04													
		APPROVED															
Dimns.	Dia	Length	SCALE: 2:1		QTY.:		PART NAME: HSKA100TMS12079WW								DRAWING No. FWA100H-TMS12079		REV. 00
0.5 to 3	± 0.05	± 0.10															
3 to 6	± 0.10	± 0.15															
6 to 30	± 0.15	± 0.20															
30 to 120	± 0.20	± 0.25															
120 to 500	± 0.30	± 0.50															