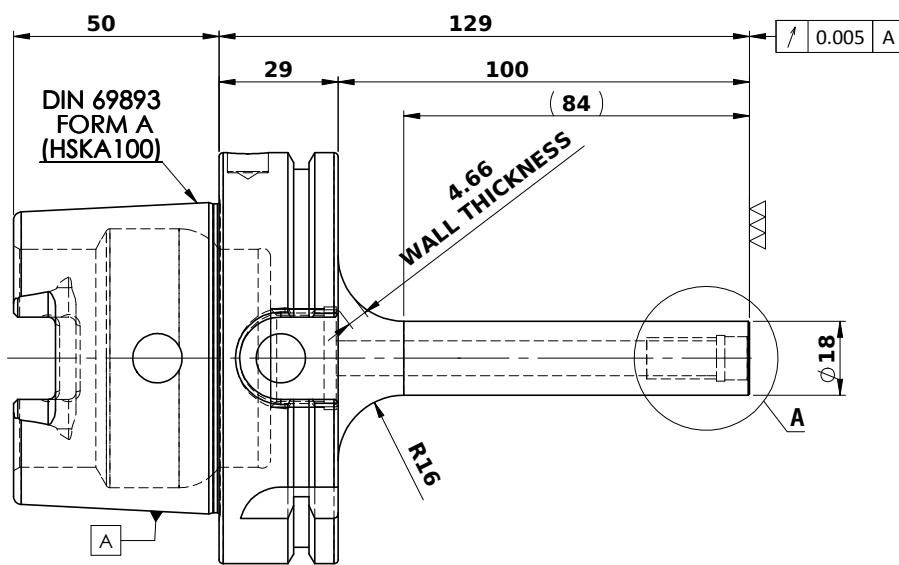
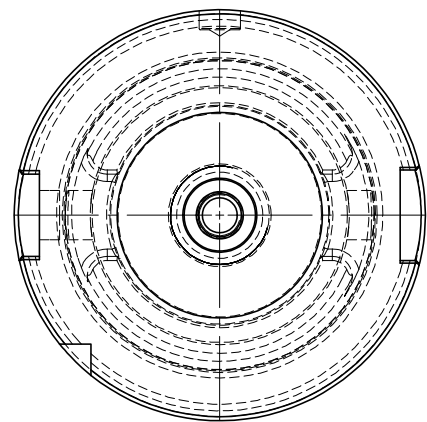
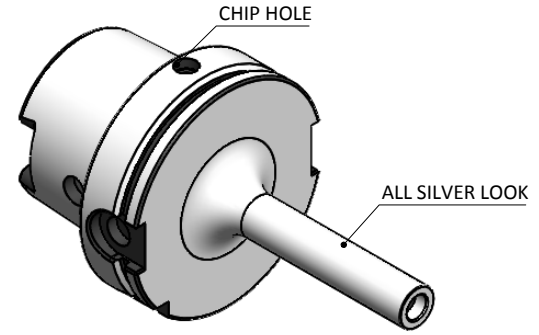


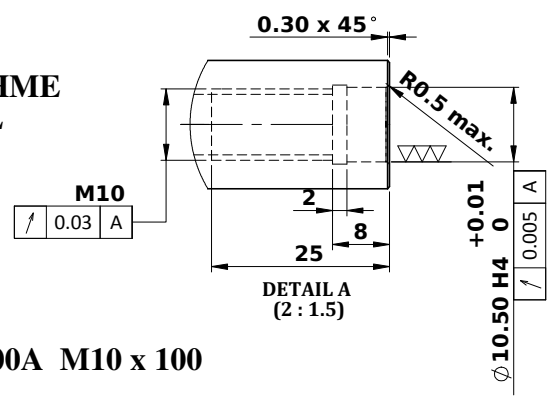
5	6	7	8
Rev.No.	Ch.Lef	Alterations	Date

All Dimensions are in MM



LABEL:-

2002385.1001
 EINSCHRAUBFRÄSERAUFNAHME
 SCREW-ON HOLDER ZYL/CYL
 DIN 69893 A HSK100A
 ESS M10 x 100 mm x 129 mm
 G2,5 / 25000 U / MIN



**MARKING: DIN 69893 A HSK100A M10 x 100
 G2,5 25000 U / MIN**

NOTE:

BALANCING 2.5 G @ 25000 RPM

WEIGHT: 2.2 Kg

μm	0.012	0.025	0.05	0.1	0.2	0.4	0.8	1.6	3.2	6.3	12.5	25	50
GRADES	N1	N2	N3	N4	N5	N6	N7	N8	N9	N10	N11	N12	
SYMBOLS	▽▽▽▽▽▽▽▽▽▽▽▽												
TOLERANCE	MATERIALS: 16MnCr5												
FREE DIMENSIONS	2017		NAME		DATE		2002385.1001						
TOLERANCE	DRAWN SVK		18/08										
	CHECKED RVL		18/08										
Dimns.	Dia	Length	APPROVED		SCALE: 2:1		QTY.:		DRAWING No.				REV.
0.5 to 3	± 0.05	± 0.10	PART NAME:		DRAWING No.				REV.				
3 to 6	± 0.10	± 0.15	HSKA100TMS10129WW				FWA100H-TMS10129				00		
6 to 30	± 0.15	± 0.20											
30 to 120	± 0.20	± 0.25											
120 to 500	± 0.30	± 0.50											