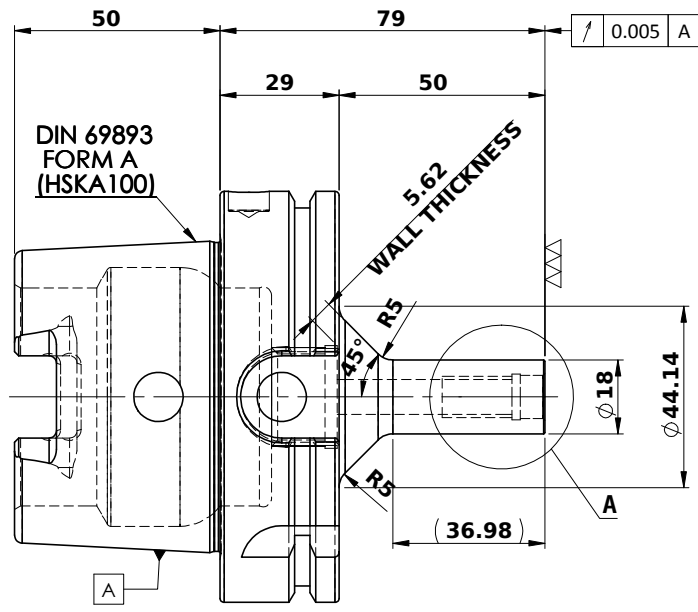
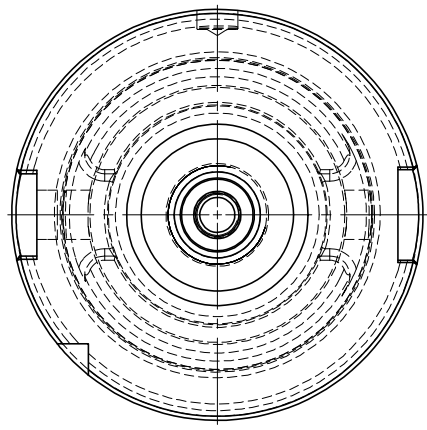
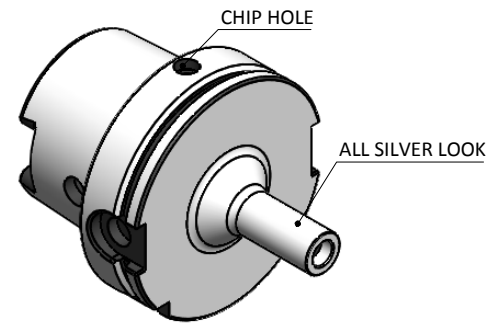


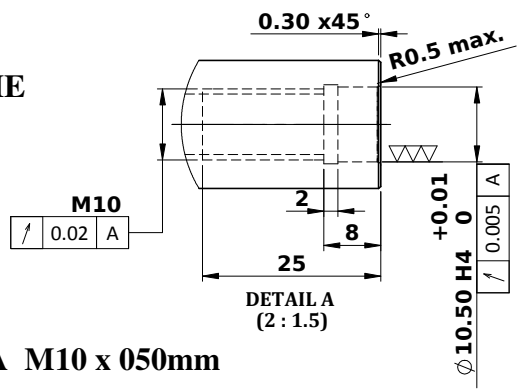
5	6	7	8
Rev.No.	Ch.Lef	Alterations	Date

All Dimensions are in MM



LABEL:-

2002385.1000
 EINSCHRAUBFRÄSERAUFNAHME
 SCREW-ON HOLDER ZYL/CYL
 DIN 69893 A HSK100A
 ESS M10 x 050 mm x 079 mm
 G2,5 / 25000 U / MIN



**MARKING: DIN 69893 A HSK100A M10 x 050mm
 G2,5 25000 U / MIN**

NOTE:

BALANCING 2.5 G @ 25000 RPM

WEIGHT: 2.1 Kg

	μ m	0.012	0.025	0.05	0.1	0.2	0.4	0.8	1.6	3.2	6.3	12.5	25	50	
GRADES		N1	N2	N3	N4	N5	N6	N7	N8	N9	N10	N11	N12		
SYMBOLS		▽	▽	▽	▽	▽	▽	▽	▽	▽	▽	▽	▽	~	
TOLERANCE	MATERIALS:	2019	NAME	DATE	2002385.1000										
FREE DIMENSIONS	16MnCr5	DRAWN	AMK	30/04											
TOLERANCE		CHECKED	RVL	30/04											
		APPROVED													
Dimns.	Dia	Length	SCALE: 2:1		QTY.:		DRAWING No. FWA100H-TMS10079								REV.
0.5 to 3	± 0.05	± 0.10													00
3 to 6	± 0.10	± 0.15													
6 to 30	± 0.15	± 0.20													
30 to 120	± 0.20	± 0.25					PART NAME: HSKA100TMS10079WW								
120 to 500	± 0.30	± 0.50					DRAWING No. FWA100H-TMS10079								