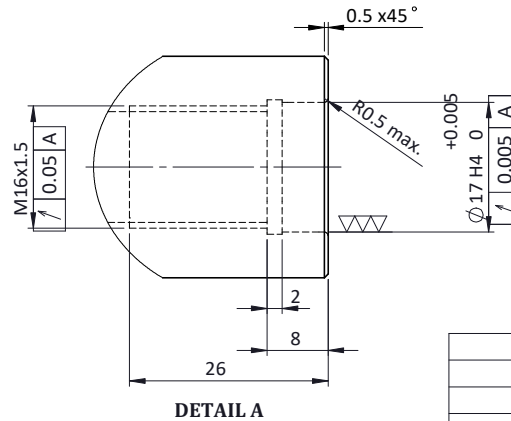
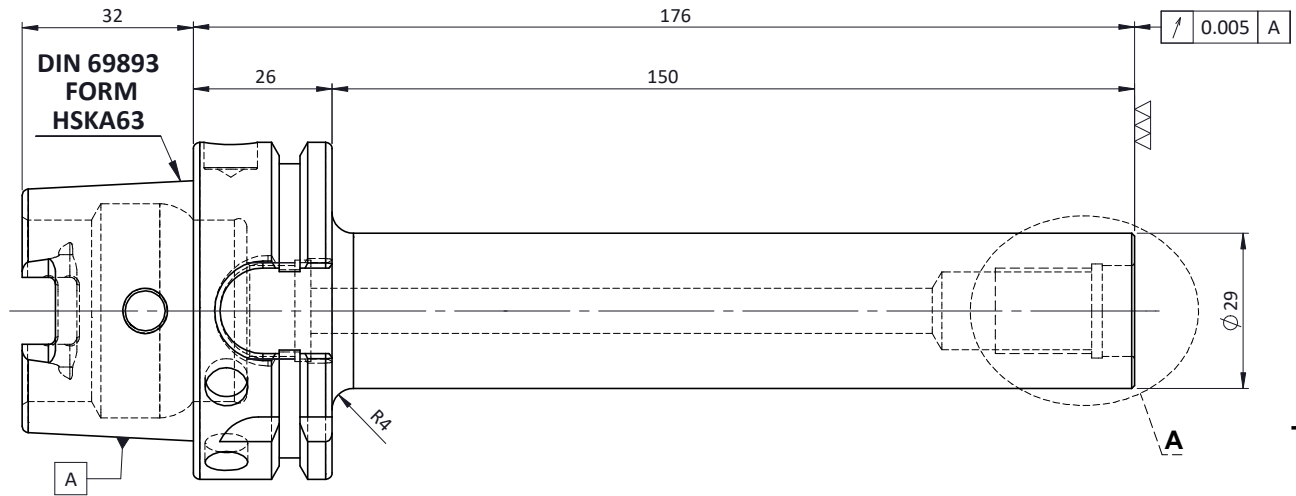
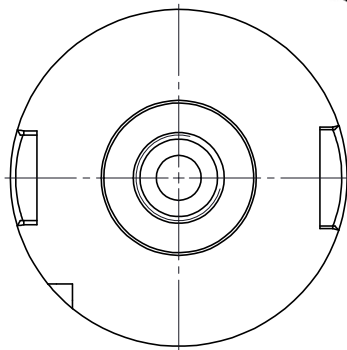
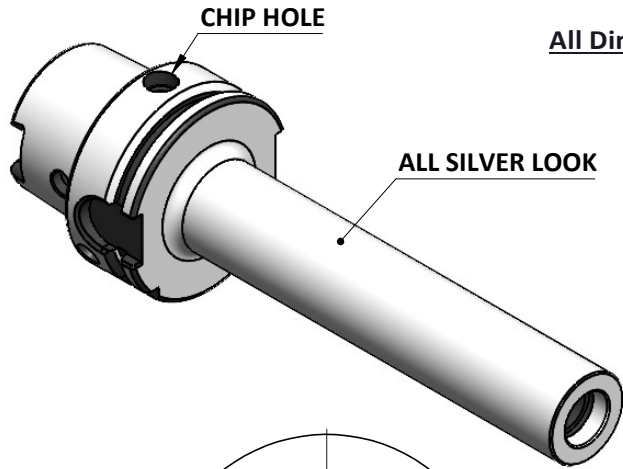


All Dimensions are in MM

Rev.No.	Ch.Lef	Alterations	Date	Sign.	Appd.

For Customer Approval



LABEL:-

2002383.1602  
 EINSCHRAUBFRÄSERAUFNAHME  
 SCREW-ON HOLDER ZYL/CYL  
 DIN 69893 A HSK63A  
 ESS M16 x 150mm x 176mm  
 G2,5 / 25000 U/MIN

MARKING: DIN 69893 A HSK63A M16 x 150mm  
 G2,5 25000 U/MIN

Notes	
Balancing Value	G2.5 @ 25000RPM
Approx Weight	1.3 Kg

TOLERANCE		GRADES											
FREE DIMENSIONS		SYMBOLS											
TOLERANCE		MATERIALS:											
Dimns.	Dia	Length	16MnCr5	2017	NAME	DATE						2002383.1602	
0.5 to 3	± 0.05	± 0.10		DRAWN	SVK	18/08							
3 to 6	± 0.10	± 0.15		CHECKED	RVL	18/08							
6 to 30	± 0.15	± 0.20		APPROVED									
30 to 120	± 0.20	± 0.25		SCALE:	NTS	QTY.:							
120 to 500	± 0.30	± 0.50		PART NAME:			DRAWING No.					REV.	
				HSKA63TMS16176WW			FWA063H-TMS16176					00	

ITEM NO.	PART NUMBER	DESCRIPTION	QTY.
1	FWA063H-TMS16176	HSKA63TMS16176WW	1

