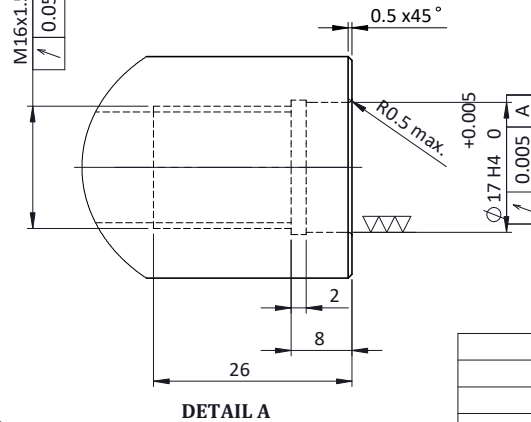
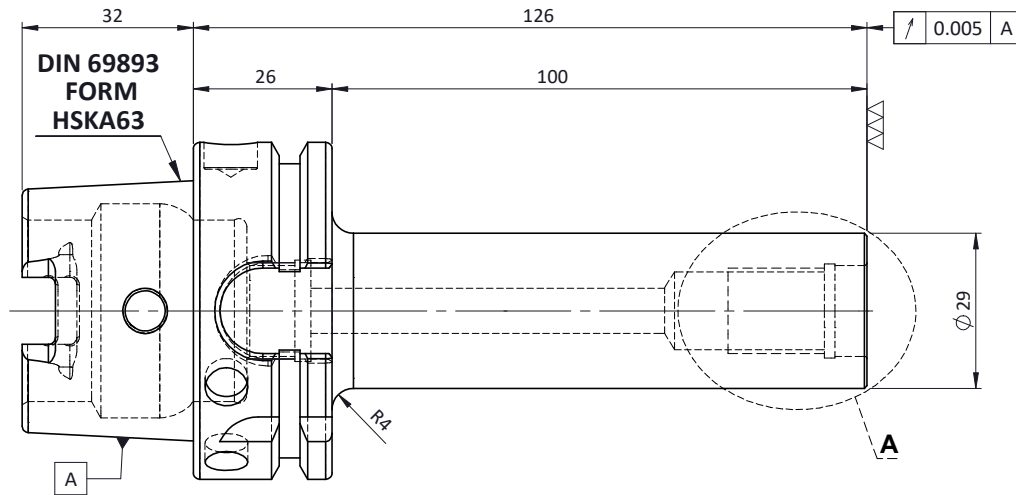
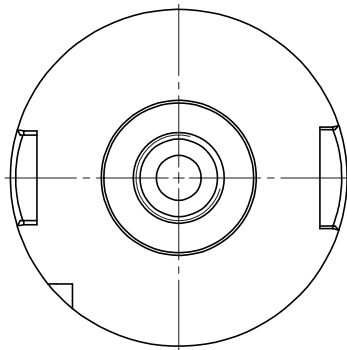
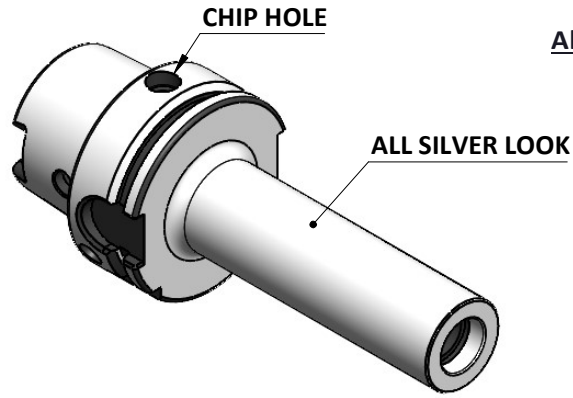


All Dimensions are in MM

Rev.No.	Ch.Lef	Alterations	Date	Sign.	Appd.

For Customer Approval



LABEL:-

2002383.1601  
 EINSCHRAUBFRÄSERAUFNAHME  
 SCREW-ON HOLDER ZYL/CYL  
 DIN 69893 A HSK63A  
 ESS M16 x 100mm x 126mm  
 G2,5 / 25000 U/MIN

MARKING: DIN 69893 A HSK63A M16 x 100mm  
 G2,5 25000 U/MIN

Notes	
Balancing Value	G2.5 @ 25000RPM
Approx Weight	1.0 Kg

	y	m	0.012	0.025	0.05	0.1	0.2	0.4	0.8	1.6	3.2	6.3	12.5	25	50
GRADES			N1	N2	N3	N4	N5	N6	N7	N8	N9	N10	N11	N12	
SYMBOLS			▽▽▽	▽▽	▽	▽	▽	▽	▽	▽	▽	▽	▽	▽	~
TOLERANCE	MATERIALS:		2017		NAME		DATE		2002383.1601						
FREE DIMENSIONS	16MnCr5		DRAWN		SVK		18/08								
TOLERANCE			CHECKED		RVL		18/08								
Dimns.	Dia	Length	APPROVED												
0.5 to 3	± 0.05	± 0.10													
3 to 6	± 0.10	± 0.15	SCALE: NTS		QTY.:										
6 to 30	± 0.15	± 0.20	PART NAME:		DRAWING No.		REV.								
30 to 120	± 0.20	± 0.25	HSKA63TMS16126WW		FWA063H-TMS16126		00								
120 to 500	± 0.30	± 0.50													

ITEM NO.	PART NUMBER	DESCRIPTION	QTY.
1	FWA063H-TMS16126	HSKA63TMS16126WW	1

1 2 3 4 5 6 7 8