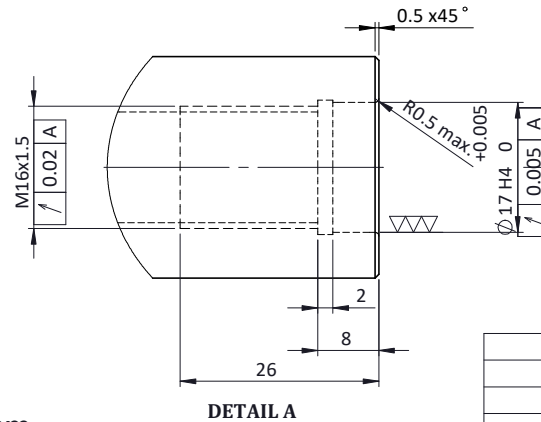
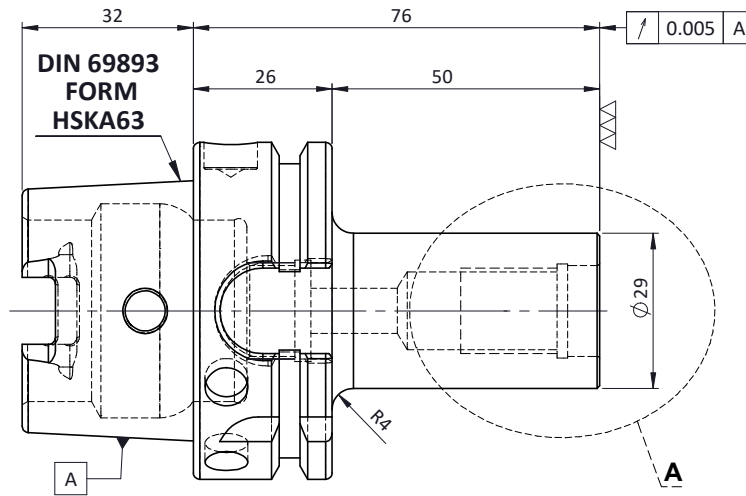
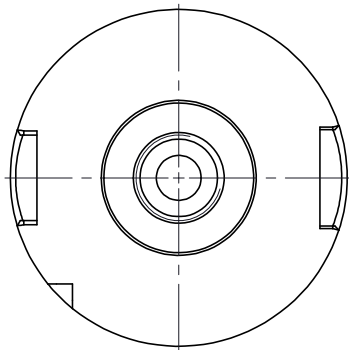
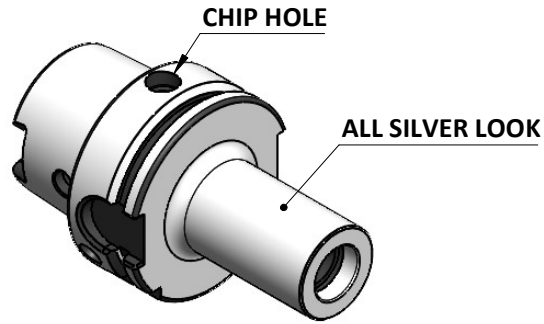


All Dimensions are in MM

Rev.No.	Ch.Lef	Alterations	Date	Sign.	Appd.

For Customer Approval



LABEL:-

2002383.1600
 EINSCHRAUBFRÄSERAUFNAHME
 SCREW-ON HOLDER ZYL/CYL
 DIN 69893 A HSK63A
 ESS M16 x 050mm x 76mm
 G2,5 / 25000 U/MIN

MARKING: DIN 69893 A HSK63A M16 x 050mm
 G2,5 25000 U/MIN

Notes	
Balancing Value	G2.5 @ 25000RPM
Approx Weight	1.0 Kg

		y	m	0.012	0.025	0.05	0.1	0.2	0.4	0.8	1.6	3.2	6.3	12.5	25	50
		GRADES	N1		N2	N3	N4	N5	N6	N7	N8	N9	N10	N11	N12	
		SYMBOLS	▽▽▽		▽▽▽	▽▽	▽	▽	▽	▽	▽	▽	▽	▽	▽	~
TOLERANCE		MATERIALS:		2019		NAME		DATE		2002383.1600						
FREE DIMENSIONS		16MnCr5		DRAWN		MVP		06/07								
TOLERANCE				CHECKED		RVL		06/07								
Dimns.				APPROVED												
Dia				SCALE :		NTS		QTY. :								
Length				PART NAME:		DRAWING No.		REV.								
0.5 to 3	± 0.05	± 0.10	HSKA63TMS16076WW		FWA063H-TMS16076		00									
3 to 6	± 0.10	± 0.15														
6 to 30	± 0.15	± 0.20														
30 to 120	± 0.20	± 0.25														
120 to 500	± 0.30	± 0.50														

ITEM NO.	PART NUMBER	DESCRIPTION	QTY.
1	FWA063H-TMS16076	HSKA63TMS16076WW	1

1 2 3 4 5 6 7 8