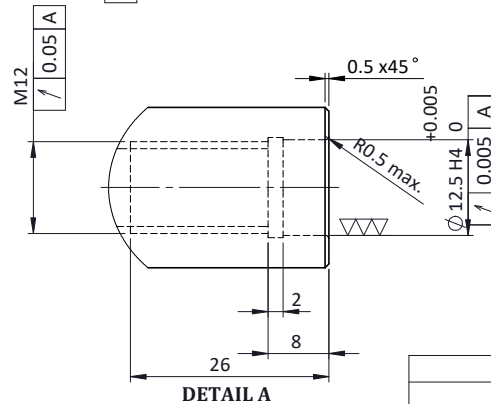
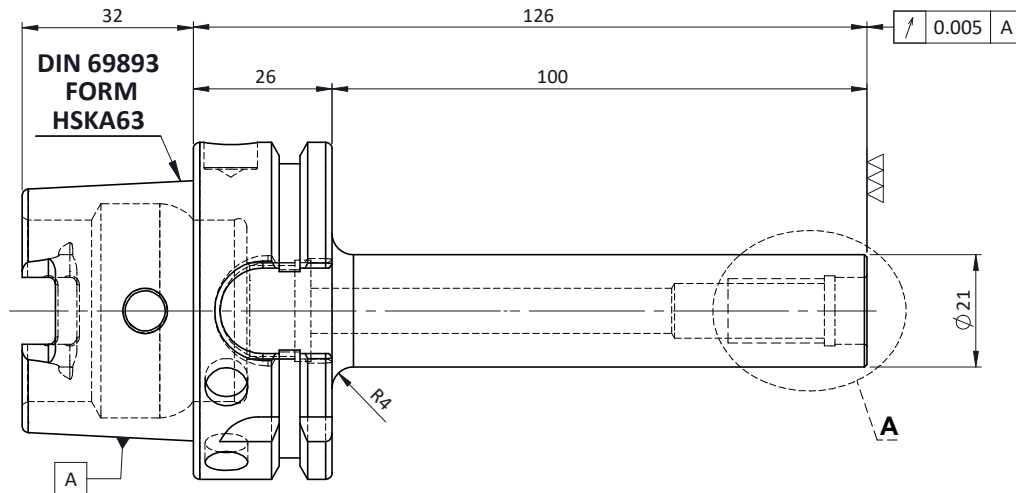
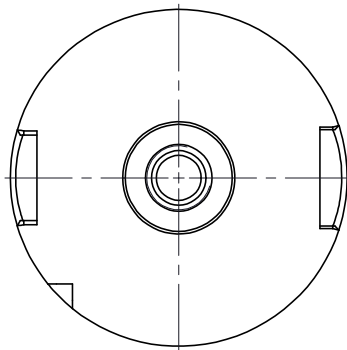
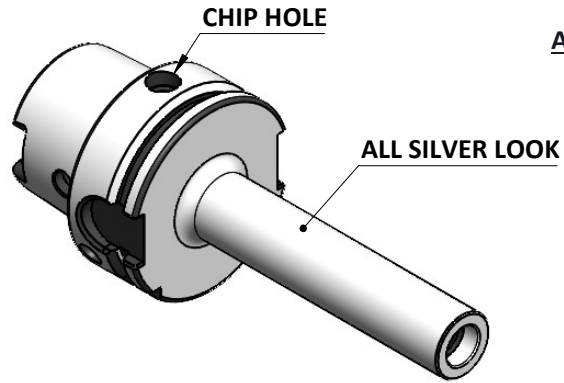


All Dimensions are in MM

Rev.No.	Ch.Lef	Alterations	Date	Sign.	Appd.

For Customer Approval



LABEL:-

2002383.1201
 EINSCHRAUBFRÄSERAUFNAHME
 SCREW-ON HOLDER ZYL/CYL
 DIN 69893 A HSK63A
 ESS M12 x 100mm x 126mm
 G2,5 / 25000 U/MIN

MARKING: DIN 69893 A HSK63A M12 x 100mm
 G2,5 25000 U/MIN

Notes	
Balancing Value	G2.5 @ 25000RPM
Approx Weight	0.84 Kg

TOLERANCE		GRADES														
FREE DIMENSIONS		y	m	0.012	0.025	0.05	0.1	0.2	0.4	0.8	1.6	3.2	6.3	12.5	25	50
TOLERANCE		GRADES		N1	N2	N3	N4	N5	N6	N7	N8	N9	N10	N11	N12	
		SYMBOLS		▽▽▽	▽▽	▽	▽	▽	▽	▽	▽	▽	▽	▽	▽	~
		MATERIALS:	2017	NAME	DATE	2002383.1201										
		16MnCr5	DRAWN	SVK	18/08											
			CHECKED	RVL	18/08											
			APPROVED													
			SCALE:	NTS	QTY.:	DRAWING No. FWA063H-TMS12126										
						PART NAME: HSKA63TMS12126WW										
						DRAWING No. FWA063H-TMS12126										
						REV. 00										

ITEM NO.	PART NUMBER	DESCRIPTION	QTY.
1	FWA063H-TMS12126	HSKA63TMS12126WW	1