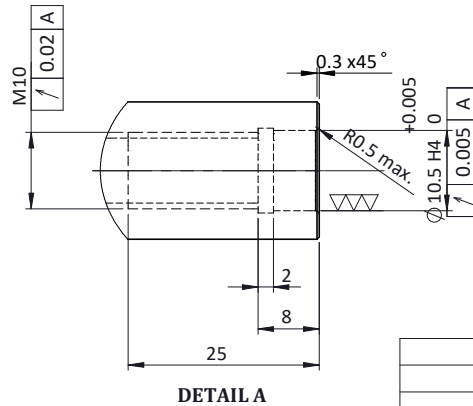
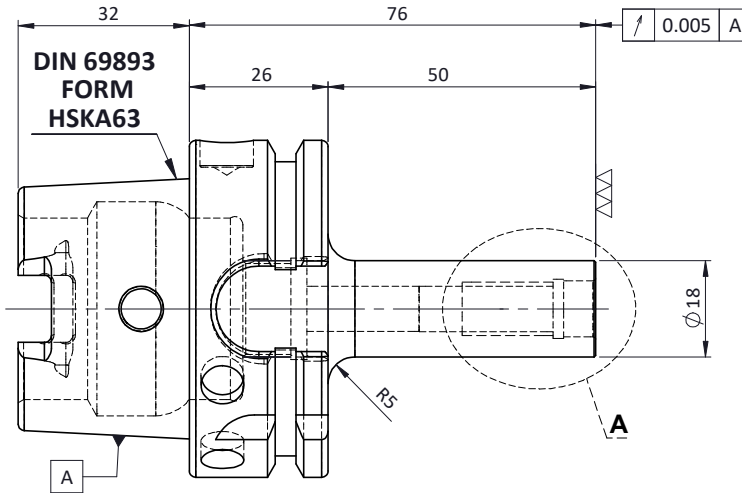
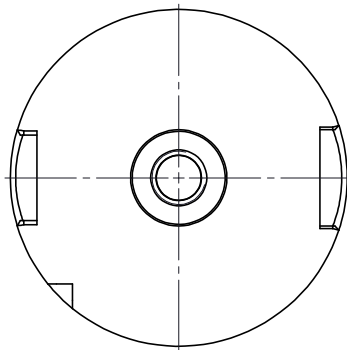
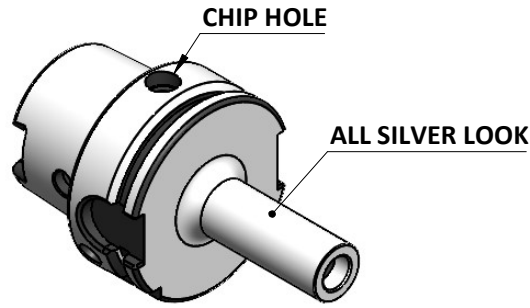


All Dimensions are in MM

Rev.No.	Ch.Lef	Alterations	Date	Sign.	Appd.

For Customer Approval



LABEL:-

2002383.1000  
 EINSCHRAUBFRÄSERAUFNAHME  
 SCREW-ON HOLDER ZYL/CYL  
 DIN 69893 A HSK63A  
 ESS M10 x 050mm x 076mm  
 G2,5 / 25000 U/MIN  
 MARKING: DIN 69893 A HSK63A M10 x 50mm

G2,5 25000 U/MIN

Notes	
Balancing Value	G2.5 @ 25000RPM
Approx Weight	0.7 Kg

TOLERANCE		GRADES																								
FREE DIMENSIONS		y	m	0.012	0.025	0.05	0.1	0.2	0.4	0.8	1.6	3.2	6.3	12.5	25	50										
TOLERANCE		N1			N2		N3		N4		N5		N6		N7		N8		N9		N10		N11		N12	
SYMBOLS		▽▽▽▽▽▽▽▽▽▽▽▽▽▽▽																								
MATERIALS:		16MnCr5																								
DRAWN		NAME		DATE		2019																				
CHECKED		AMK		02/05		2002383.1000																				
APPROVED		RVL		02/05		2002383.1000																				
SCALE:		NTS		QTY.:		2002383.1000																				
PART NAME:		HSKA63TMS10076WW																								
DRAWING No.		FWA063H-TMS10076																								
REV.		00																								

ITEM NO.	PART NUMBER	DESCRIPTION	QTY.
1	FWA063H-TMS10076	HSKA63TMS10076WW	1