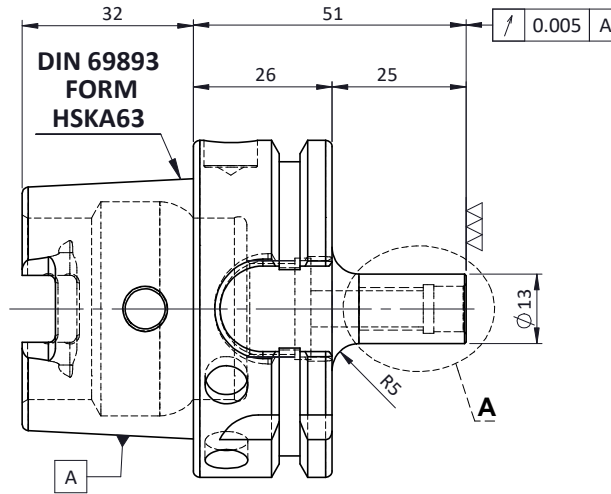
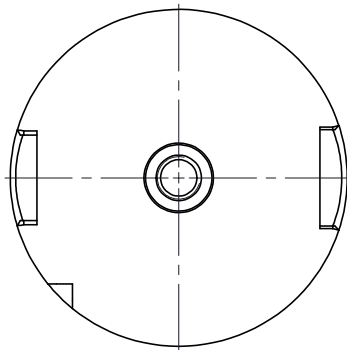
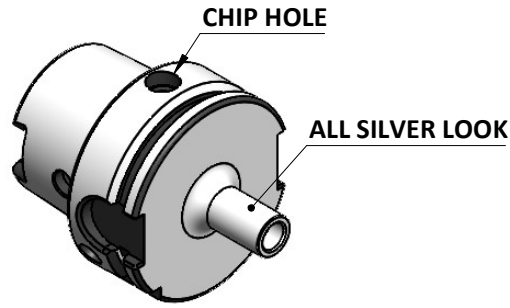


All Dimensions are in MM

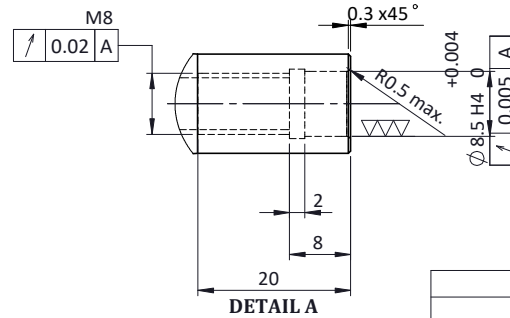
Rev.No.	Ch.Lef	Alterations	Date	Sign.	Appd.

**For Customer Approval**



**LABEL:-**

2002383.0804  
 EINSCHRAUBFRÄSERAUFNAHME  
 SCREW-ON HOLDER ZYL/CYL  
 DIN 69893 A HSK63A  
 ESS M08 x 025mm x 051mm  
 G2,5 / 25000 U/MIN



**MARKING: DIN 69893 A HSK63A M08 x 051mm  
 G2,5 25000 U/MIN**

Notes	
Balancing Value	G2.5 @ 25000RPM
Approx Weight	0.66 Kg

	y	m	0.012	0.025	0.05	0.1	0.2	0.4	0.8	1.6	3.2	6.3	12.5	25	50
GRADES			N1	N2	N3	N4	N5	N6	N7	N8	N9	N10	N11	N12	
SYMBOLS			▽▽▽	▽▽	▽	▽	▽	▽	▽	▽	▽	▽	▽	▽	~
TOLERANCE	MATERIALS:		2019		NAME		DATE		<b>2002383.0804</b>						
FREE DIMENSIONS	16MnCr5		DRAWN		PGK		06/07								
TOLERANCE			CHECKED		RVL		06/07								
Dimns.	Dia	Length	APPROVED												
0.5 to 3	± 0.05	± 0.10	SCALE :		NTS		QTY. :								
3 to 6	± 0.10	± 0.15	PART NAME:					DRAWING No.					REV.		
6 to 30	± 0.15	± 0.20	HSKA63TMS08051WW					FWA063H-TMS08051					00		
30 to 120	± 0.20	± 0.25													
120 to 500	± 0.30	± 0.50													

ITEM NO.	PART NUMBER	DESCRIPTION	QTY.
1	FWA063H-TMS08051	HSKA63TMS08051WW	1