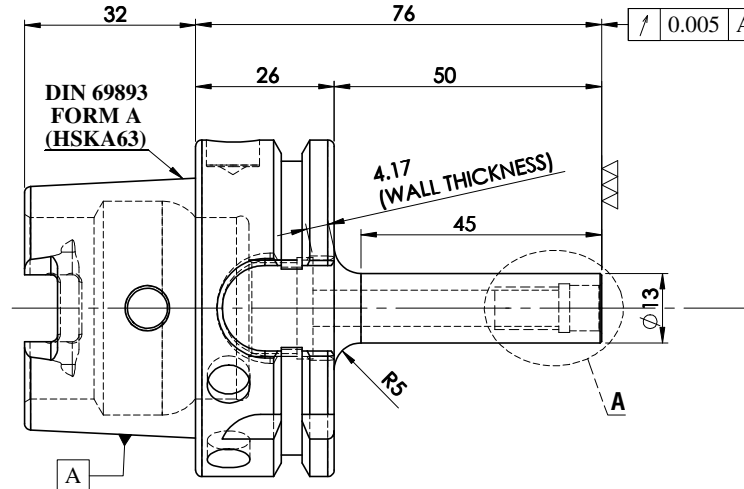
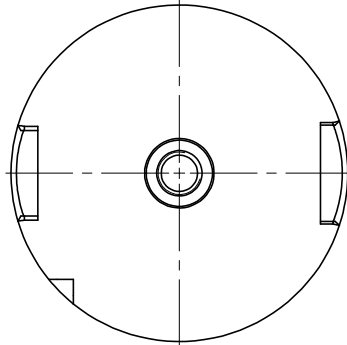
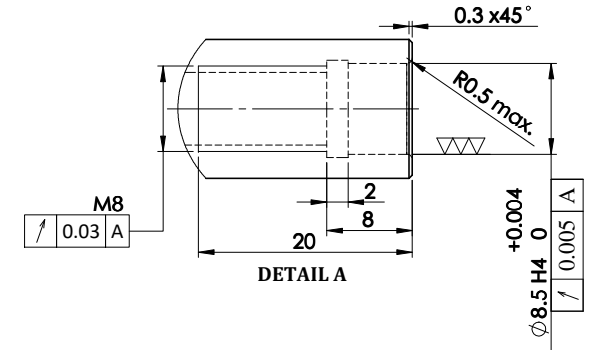
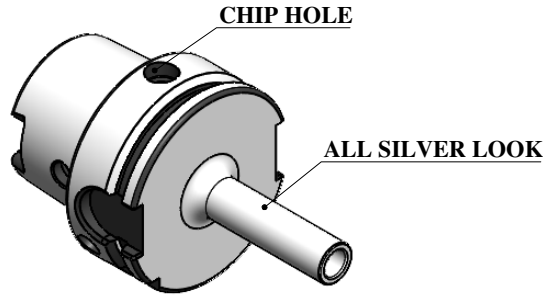


All Dimensions are in MM

Rev.No.	Ch.Lef	Alterations	Date	Sign.	Appd.



**LABEL:-**

2002383.0800  
 EINSCHRAUBFRÄSERAUFNAHME  
 SCREW-ON HOLDER ZYL/CYL  
 DIN 69893 A HSK63A  
 ESS M08 x 050mm x 076mm  
 G2,5 / 25000 U/MIN

MARKING: DIN 69893 A HSK63A M08 x 050mm  
 G2,5 25000 U/MIN

**NOTE :**

**BALANCING 2.5 G @ 25000 RPM**

**WEIGHT : 0.7 Kg**

	μ m	0.012	0.025	0.05	0.1	0.2	0.4	0.8	1.6	3.2	6.3	12.5	25	50
GRADES		N1	N2	N3	N4	N5	N6	N7	N8	N9	N10	N11	N12	
SYMBOLS		▽▽▽	▽▽	▽	▽	▽	▽	▽	▽	▽	▽	▽	▽	~
TOLERANCE	MATERIALS:	2019		NAME		DATE		2002383.0800						
FREE DIMENSIONS	16MnCr5	DRAWN	AMK	02/05										
TOLERANCE		CHECKED	RVL	02/05										
		APPROVED												
Dimns.	Dia	Length	SCALE: NTS		QTY.:		DRAWING No.							
0.5 to 3	± 0.05	± 0.10	PART NAME:		DRAWING No.		REV.							
3 to 6	± 0.10	± 0.15	HSKA63TMS08076WW		FWA063H-TMS08076		00							
6 to 30	± 0.15	± 0.20												
30 to 120	± 0.20	± 0.25												
120 to 500	± 0.30	± 0.50												