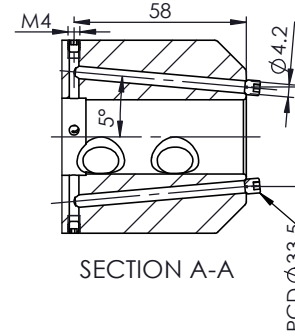
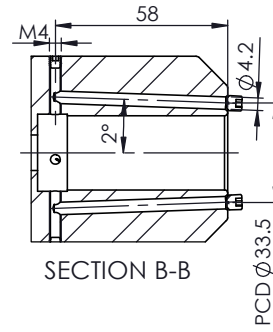
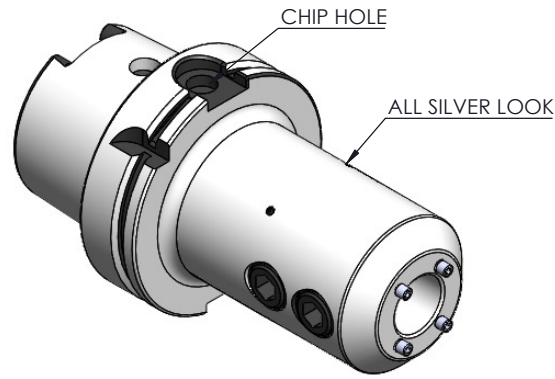


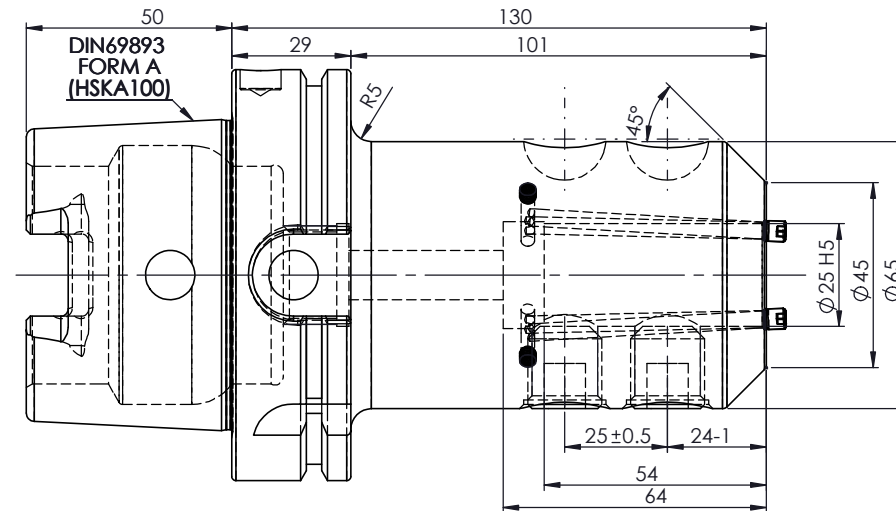
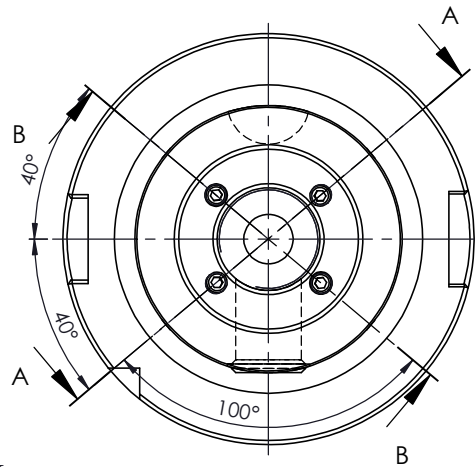
All Dimensions are in MM

Rev.No.	Ch.Let	Alterations	Date	Sign.	Appd.

For Customer Approval



SCREWS TO BE PACKED SEPERATELY
IN PLASTIC POUCH WITH LABEL & PUT INTO
WELDON BORE & THEN SEAL THE HOLDER WITH COVER
LABEL FOR PLASTIC BAGS:
Verschlusschraube
Grub Screw
M5X 5MM x 4 NO'S



LABEL :
2002379.2505
WELDON-AUFNAHME MIT KK
WELD.HOLDER COOL.CHANNEL
DIN69893 HSK100A
WK 25 mm x 130 mm
G2.5 25000 U/MIN

NOTE :
BALANCING 2.5G AT 25000 RPM
WEIGHT :4.20 kg

**MARKING : DIN 69893 A HSK100A WK25 H130
G2.5 25000 U/MIN**

ITEM NO.	PART NUMBER	DESCRIPTION	QTY.
1	FWA100H-EKH25130	HSKA100EK25130WW	1
2	GS-M18X20X2-DIN1835-B	GRUB SCREW	2
3	GS-M4X4-COATING	GRUB SCREW	4
4	GS-M5X5-COATING	GRUB SCREW	4

µm	0.012	0.025	0.05	0.1	0.2	0.4	0.8	1.6	3.2	6.3	12.5	25	50
GRADES	N1	N2	N3	N4	N5	N6	N7	N8	N9	N10	N11	N12	
SYMBOLS	▽▽▽			▽▽▽			▽▽			▽			~
TOLERANCE FREE DIMENSIONS TOLERANCE	MATERIALS: 16MnCr5		2023		NAME		DATE		2002379.2505				
Dimns. Dia Length	DRAWN		YJK		27/11								
0.5 to 3 ±0.05 ±0.10	CHECKED		RVL		27/11								
3 to 6 ±0.10 ±0.15	APPROVED												
6 to 30 ±0.15 ±0.20	PART NAME:		SCALE : NTS		QTY. :		DRAWING No.						
30 to 120 ±0.20 ±0.25	HSKA100EK25130WW						FWA100H-EKH25130						
120 to 500 ±0.30 ±0.50							REV.						
							00						