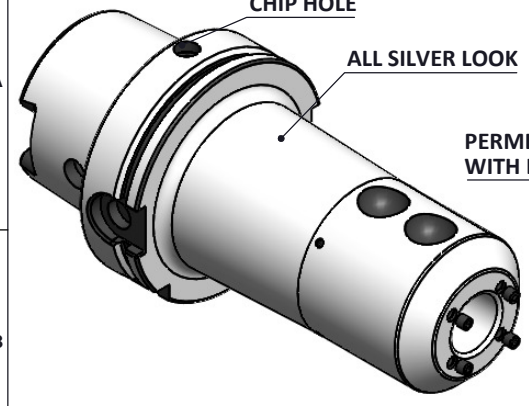
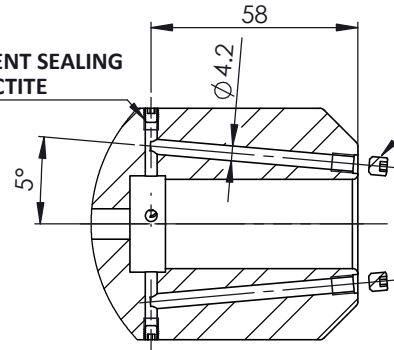


Rev.No.	Ch.Let	Alterations	Date	Sign.	Appd.

All Dimensions are in MM



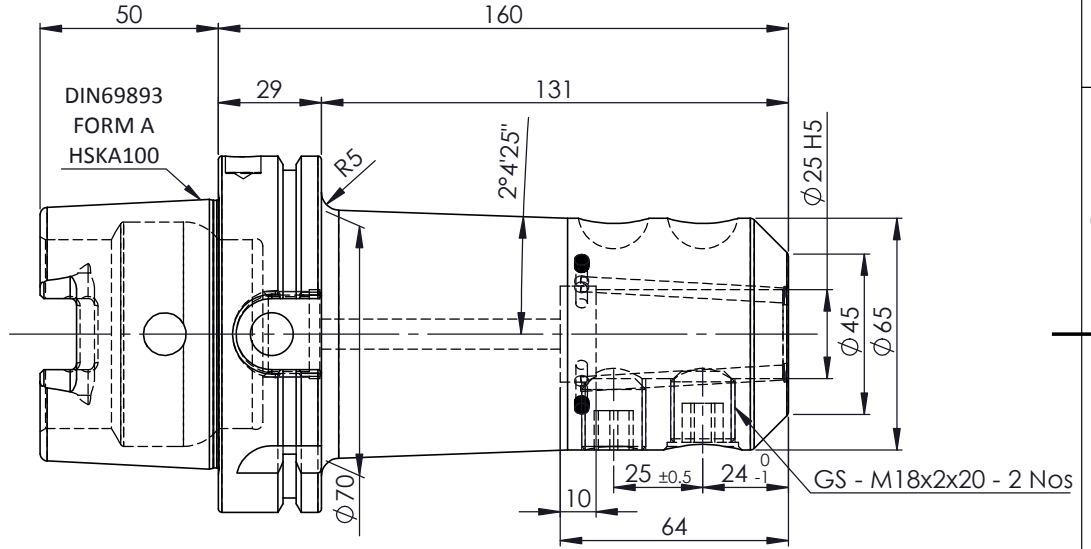
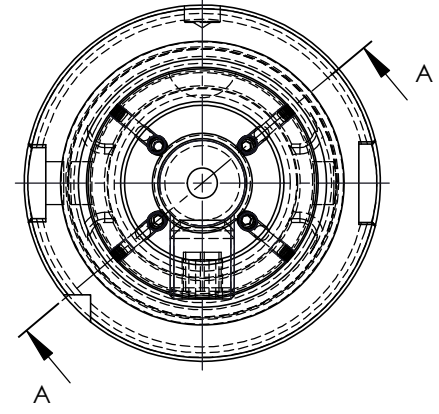
PERMENENT SEALING WITH LOCTITE



SCREWS TO BE PACKED SEPERATELY IN PLASTIC POUCH WITH LABEL & PUT INTO WELDON BORE & THEN SEAL THE HOLDER WITH COVER

LABEL FOR PLASTIC BAGS:
Verschlusschraube
Grub Screw
M5 X 5mm x 2.5 mm

SECTION A-A



LABEL :
2002379.2502
WELDON-AUFNAHME MIT KK
WELD.HOLDER COOL.CHANNEL
DIN69893 HSK100A
WK 25 mm x 160 mm
G2.5 25000 U/MIN

**MARKING : DIN 69893 A HSK100A WK25 H160
G2.5 25000 U/MIN**

NOTE :
BALANCING 2.5G AT 25000 RPM

WEIGHT : 5.1 Kg

ITEM NO.	PART NUMBER	DESCRIPTION	QTY.
1	FWA100H-EKH25160	HSKA100EK25160WW	1
2	GS-M18X20X2-DIN1835-B	GRUB SCREW	2
3	GS-M5X5	GRUB SCREW	4
4	GS-M4X4	GRUB SCREW	4

μm	0.012	0.025	0.05	0.1	0.2	0.4	0.8	1.6	3.2	6.3	12.5	25	50
GRADES	N1	N2	N3	N4	N5	N6	N7	N8	N9	N10	N11	N12	
SYMBOLS	▽▽▽			▽▽▽			▽▽			▽			~
TOLERANCE	MATERIALS:			NAME		DATE		2002379.2502					
FREE DIMENSIONS	16MnCr5			ELA		22/5							
TOLERANCE	DRAWN			RVL		22/5							
Dimns.	Dia	Length	APPROVED			SCALE : NTS QTY. :							
0.5 to 3	± 0.05	± 0.10				PART NAME: HSKA100 EK25 160WW		DRAWING No. FWA100H-EKH25160		REV. 02			
3 to 6	± 0.10	± 0.15											
6 to 30	± 0.15	± 0.20											
30 to 120	± 0.20	± 0.25											
120 to 500	± 0.30	± 0.50											