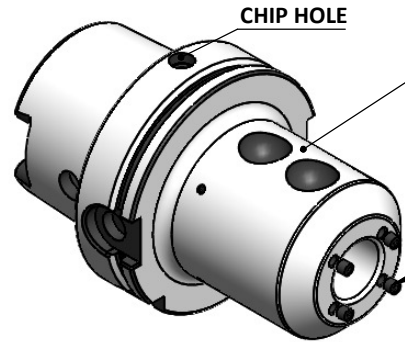
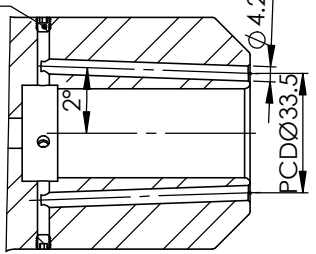


Rev.No.	Ch.Let	Alterations	Date	Sign.	Appd.
04		EK HOLES 5° CHANGED TO 2° TWO HOLES	24/02/23	RAJ	RVL

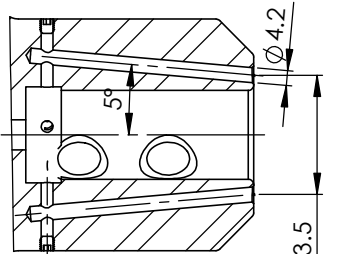


CHIP HOLE
ALL SILVER LOOK
 All Dimensions are in MM
PERMEMENT SEALING WITH LOCTITE

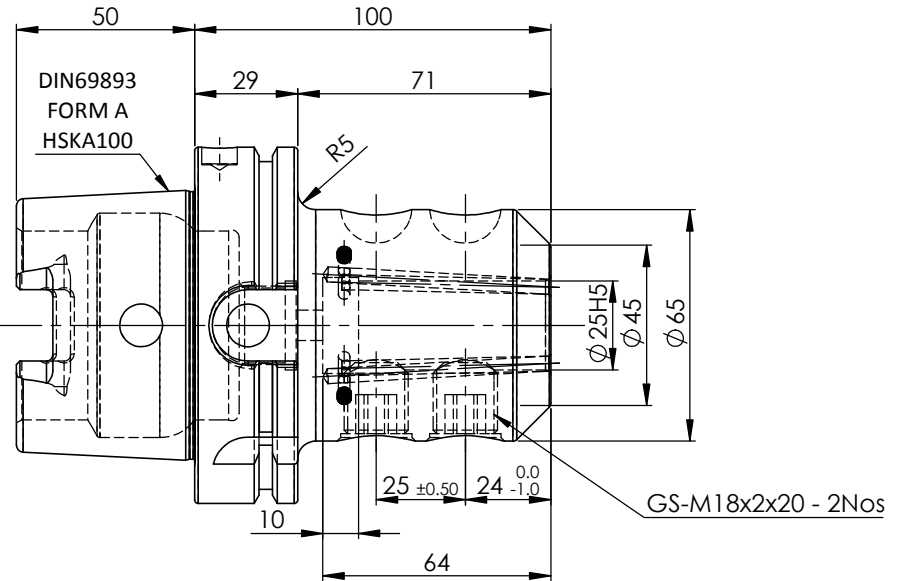
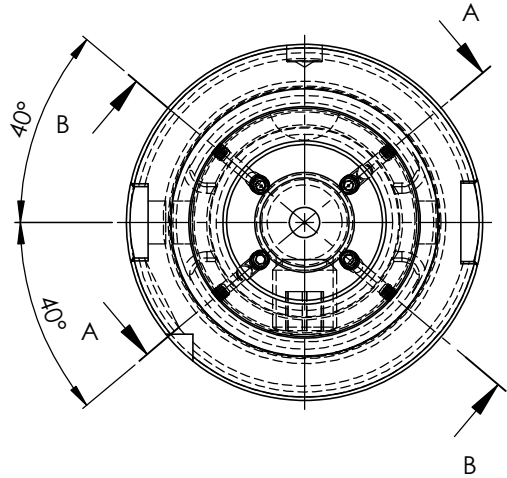
SCREW TO BE PACKED SEPERATRLY IN PLASTIC POUCH WITH LABEL & PUT INTO WELDON BORE & THEN SEAL THE HOLDER WITH COVER LABEL FOR PLASTIC BAGS:
 Verschlusschraube
 Grub Screw
 M5 X 5mm x 2.5 mm



SECTION B-B



SECTION A-A



LABEL :
 2002379.2500
 WELDON-AUFNAHME MIT KK
 WELD.HOLDER COOL.CHANNEL
 DIN69893 HSK100A
 WK 25 mm x 100 mm
 G2.5 25000 U/MIN

**MARKING : DIN 69893 A HSK100A WK25 H100
 G2.5 25000 U/MIN**

NOTE :
BALANCING 2.5G AT 25000 RPM

WEIGHT : 3.4 Kg

ITEM NO.	PART NUMBER	DESCRIPTION	QTY.
1	FWA100H-EKH25100	HSKA100EK25100WW	1
2	GS-M18X20X2-DIN1835-B	GRUB SCREW	2
3	GS-M4X4	GRUB SCREW	4
4	GS-M5X5	GRUB SCREW	4

	µm	0.012	0.025	0.05	0.1	0.2	0.4	0.8	1.6	3.2	6.3	12.5	25	50
	GRADES	N1		N2	N3	N4	N5	N6	N7	N8	N9	N10	N11	N12
	SYMBOLS	▽▽▽		▽▽	▽	▽	▽	▽	▽	▽	▽	▽	▽	~
TOLERANCE		MATERIALS:		2015	NAME		DATE		2002379.2500					
FREE DIMENSIONS		16MnCr5		DRAWN	E.Ld		22/5							
TOLERANCE				CHECKED	RVL		22/5							
				APPROVED										
Dimns.	Dia	Length	PART NAME:		DRAWING No.		REV.							
0.5 to 3	±0.05	±0.10	HSKA100EK25100WW		FWA100H-EKH25100		03							
3 to 6	±0.10	±0.15												
6 to 30	±0.15	±0.20												
30 to 120	±0.20	±0.25												
120 to 500	±0.30	±0.50												