

All Dimensions are in MM

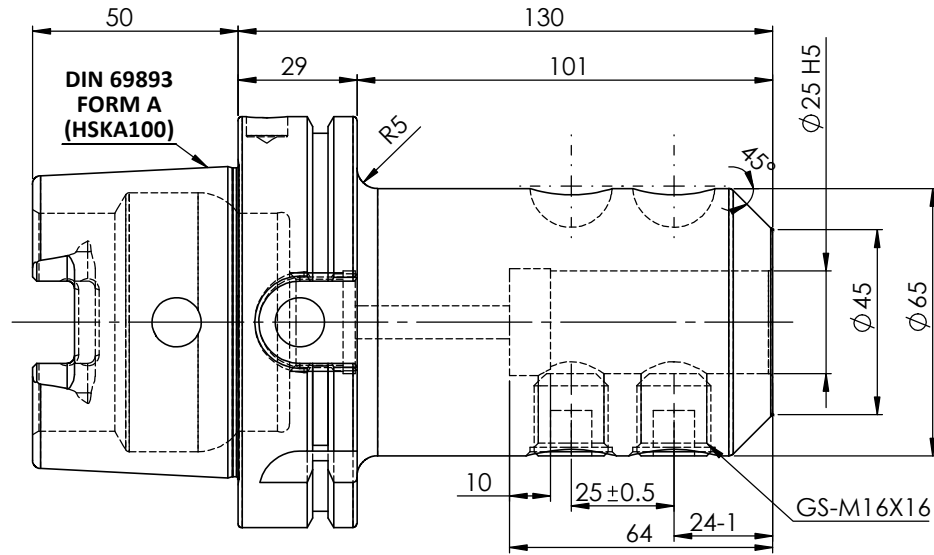
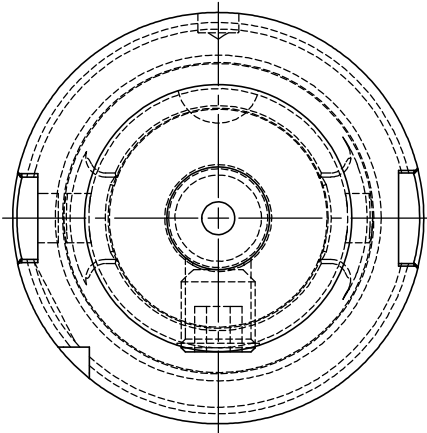
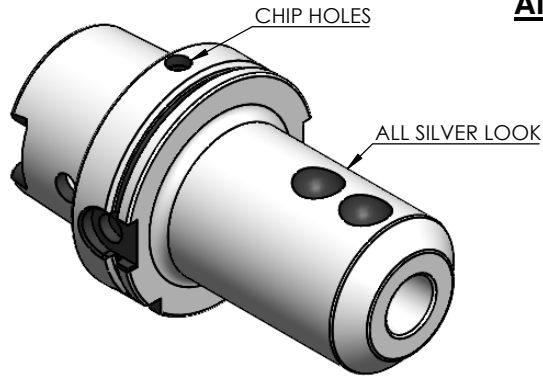


TABLE :

**2002378.2505
WELDON-AUFNAHME
WELDON HOLDER
DIN69893 HSKA100A
WE 25mm x 130 mm
G2.5 25000 U/MIN**

**MARKING : DIN 69893 A HSK100A WE25H130
G2.5 25000 U/MIN**

2	GS-M18X20X2-DIN1835-B	GRUB SCREW	2
1	FWA100H-EMH25130	HSKA100EM25130WW	1
ITEM NO.	PART NUMBER	DESCRIPTION	QTY.

Rev.No.	Ch.Let	Alterations	Date	Sign.	Appd.

For Customer Approval

Notes	
Balancing Value	G2.5 @25000RPM
Approx Weight	4.20Kg

µ m	0.012	0.025	0.05	0.1	0.2	0.4	0.8	1.6	3.2	6.3	12.5	25	50
GRADES	N1	N2	N3	N4	N5	N6	N7	N8	N9	N10	N11	N12	
SYMBOLS	▽▽▽	▽▽	▽	▽	▽	▽	▽	▽	▽	▽	▽	▽	~
TOLERANCE FREE DIMENSIONS	16MnCr5			2017	NAME	DATE	2002378.2505						
TOLERANCE	16MnCr5			DRAWN	HPK	31/10							
Dimns.	Dia	Length		CHECKED	RVL	31/10							
0.5 to 3	± 0.05	± 0.10		APPROVED									
3 to 6	± 0.10	± 0.15		SCALE :	NTS	QTY. :	PART NAME:		DRAWING No.		REV.		
6 to 30	± 0.15	± 0.20		HSKA100EM25130WW			FWA100H-EMH25130		00				
30 to 120	± 0.20	± 0.25											
120 to 500	± 0.30	± 0.50											