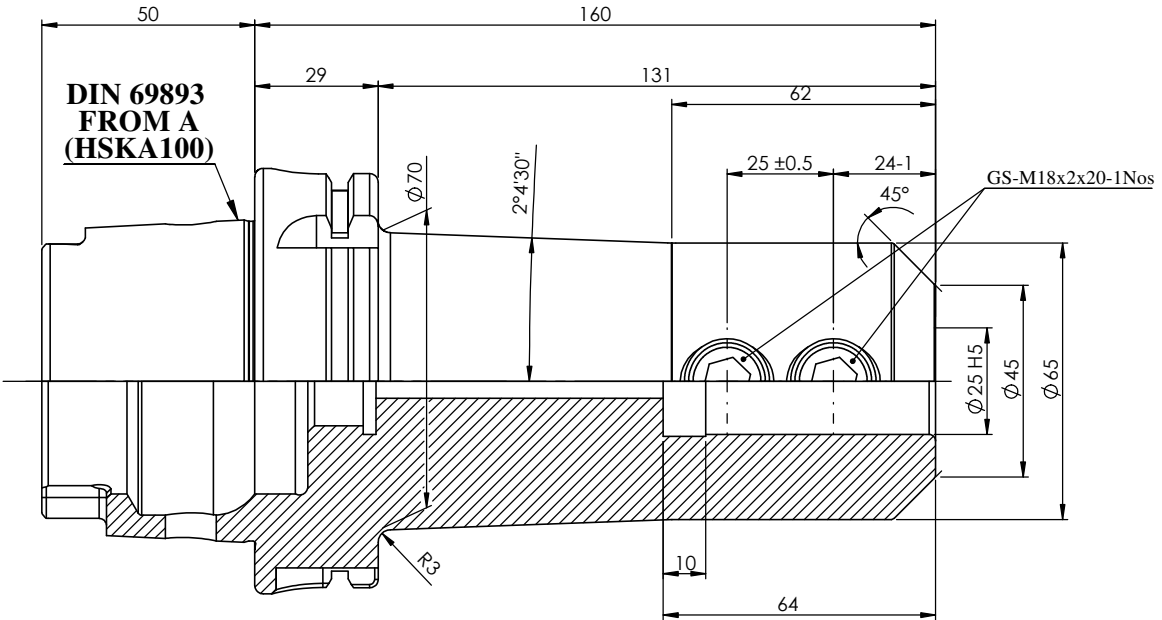
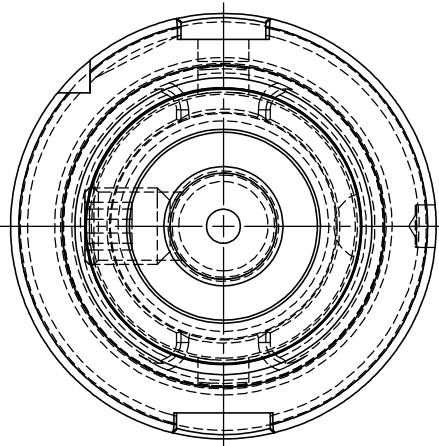
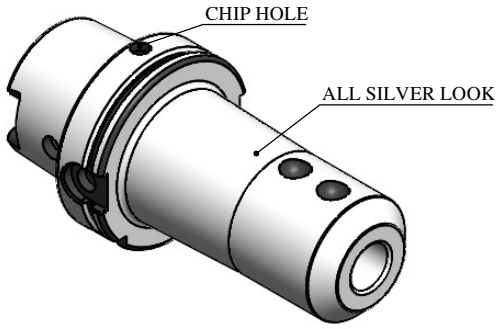


Rev.No.	Ch.Let	Alterations	Date	Sign.	Appd.

All Dimensions are in MM



LABEL :

**2002378.2502
WELDON-AUFNAHME
WELDON HOLDER
DIN69893 HSK100A
WE 25 mm x 160 mm
G2,5 25.000 U / MIN**

**MARKING : DIN 69893 A HSK100A WE25 H160
G2.5 25000 U/MIN**

**NOTE :
BALANCING 2.5G AT 25000 RPM
WEIGHT : 5.1 Kg**

ITEM NO.	PART NUMBER	DESCRIPTION	QTY.
1	FWA100H-EMH25160	HSKA100EM25160WW	1
2	GS-M18X20X2-DIN1835-B	GRUB SCREW	2

µm	0.012	0.025	0.05	0.1	0.2	0.4	0.8	1.6	3.2	6.3	12.5	25	50
GRADES	N1	N2	N3	N4	N5	N6	N7	N8	N9	N10	N11	N12	
SYMBOLS	▽▽▽▽	▽▽▽	▽▽	▽	~								
TOLERANCE FREE DIMENSIONS TOLERANCE	MATERIALS: 16MnCr5		2015	NAME	DATE	2002378.2502							
Dimns. Dia Length	±0.05 ±0.10	±0.10 ±0.15	DRAWN	MSJP	29/06								
±0.5 to 3	±0.05 ±0.10	±0.10 ±0.15	CHECKED	RVL	29/06								
±3 to 6	±0.10 ±0.15	±0.15 ±0.20	APPROVED										
±6 to 30	±0.15 ±0.20	±0.20 ±0.25	PART NAME: HSK 100EM25160WW			DRAWING No.		FWA100H-EMH25160					
±30 to 120	±0.20 ±0.25	±0.25 ±0.30	SCALE : NTS QTY. :			REV.		00					
±120 to 500	±0.30 ±0.50	±0.50 ±0.63											