

All Dimensions are in MM

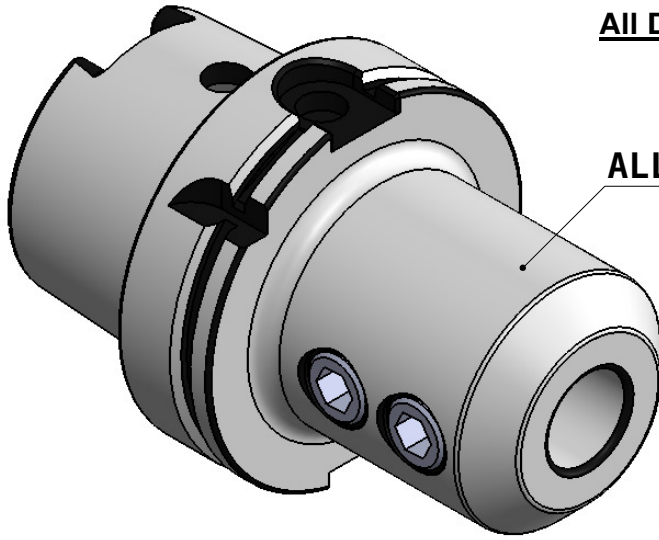
5	6	7	8
Rev.No.	Ch.Let	Alterations	Date

CUSTOMER APPROVAL REQUIRED

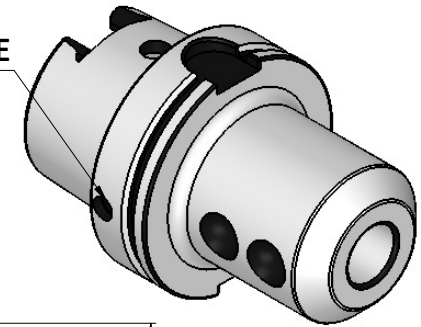
APPROVED BY	
DATE	

FOR QUOTATION PURPOSE ONLY

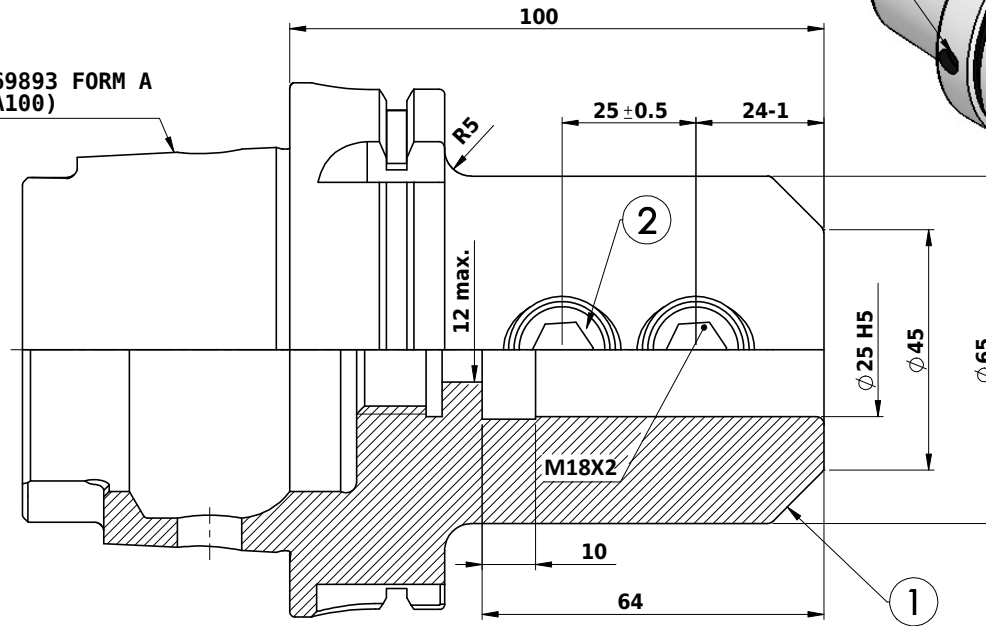
ALL SILVER LOOK



CHIP HOLE



DIN 69893 FORM A (HSAK100)



Label :

2002378.2500
WELDON-AUFNAHME
WELDON HOLDER
DIN69893 HSK100A
WE 25 mm x 100 mm
G2,5 / 25000

**MARKING : DIN 69893 A HSK100A WE25H100
G2.5 25000 U/MIN**

NOTE :

BALANCING 2.5G AT 25000 RPM

WEIGHT : 3.65 kg

µ m	0.012	0.025	0.05	0.1	0.2	0.4	0.8	1.6	3.2	6.3	12.5	25	50
GRADES	N1	N2	N3	N4	N5	N6	N7	N8	N9	N10	N11	N12	
SYMBOLS	▽▽▽	▽▽	▽	▽	▽	▽	▽	▽	▽	▽	▽	▽	~
TOLERANCE FREE DIMENSIONS TOLERANCE	2015		NAME		DATE		2002378.2500						
Dimns.	16MnCr5		DRAWN		29/06								
Dia	MHP		CHECKED		RVL								
Length	APPROVED		SCALE : NTS		QTY. :								
0.5 to 3	± 0.05	± 0.10	PART NAME:				DRAWING No.		REV.				
3 to 6	± 0.10	± 0.15	END MILL HOLDER				HSAK100 EM 25 100 WW G2.5		00				
6 to 30	± 0.15	± 0.20											
30 to 120	± 0.20	± 0.25											
120 to 500	± 0.30	± 0.50											

ITEM NO.	PART NUMBER	DESCRIPTION	QTY.
1	HSAK100 EM 25 100 WW G2.5	END MILL HOLDER	1
2	GS-M18X2X20-DIN1835-B	GRUB SCREW-(B.O.)	2