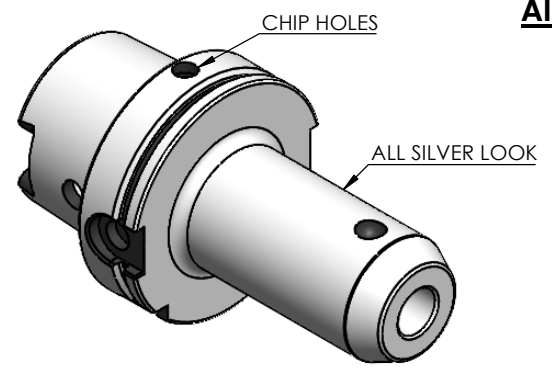


1 2 3 4 5 6 7 8

Rev.No.	Ch.Let	Alterations	Date	Sign.	Appd.

All Dimensions are in MM



For Customer Approval

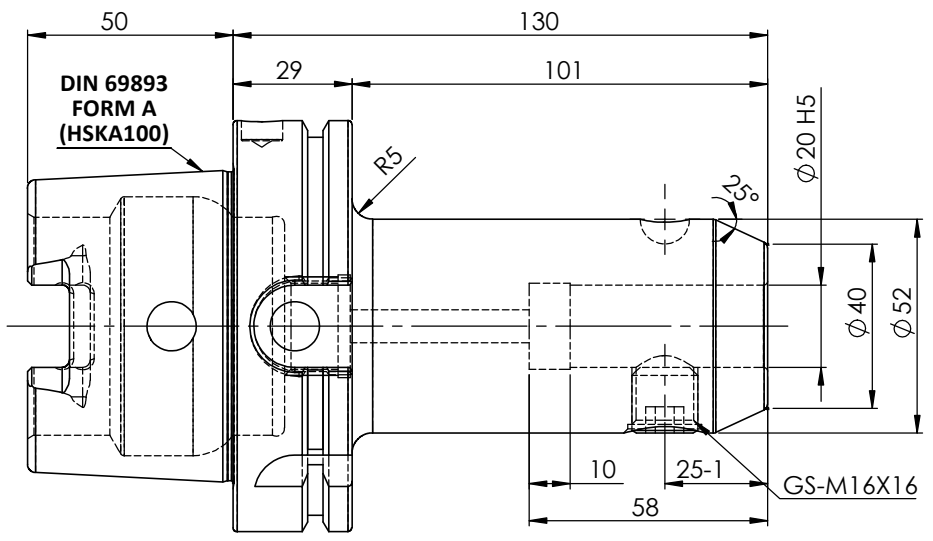
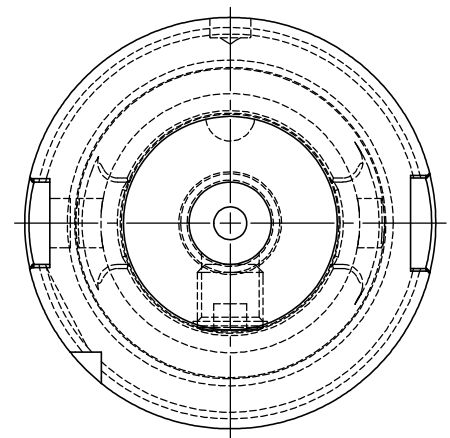


TABLE :

**2002378.2005
WELDON-AUFNAHME
WELDON HOLDER
DIN69893 HSKA100A
WE 20mm x 130 mm
G2.5 25000 U/MIN**

**MARKING : DIN 69893 A HSK100A WE20H130
G2.5 25000 U/MIN**

Notes	
Balancing Value	G2.5 @25000RPM
Approx Weight	3.40Kg

µm	0.012	0.025	0.05	0.1	0.2	0.4	0.8	1.6	3.2	6.3	12.5	25	50
GRADES	N1	N2	N3	N4	N5	N6	N7	N8	N9	N10	N11	N12	
SYMBOLS	▽▽▽			▽▽▽			▽▽			▽			~

TOLERANCE			MATERIALS:			2017		NAME		DATE	
FREE DIMENSIONS			16MnCr5			DRAWN		HPK		31/10	
TOLERANCE						CHECKED		RVL		31/10	
Dimns.	Dia	Length				APPROVED		SCALE : NTS		QTY. :	
0.5 to 3	± 0.05	± 0.10				PART NAME:		DRAWING No.		REV.	
3 to 6	± 0.10	± 0.15	HSKA100EM20130WW				FWA100H-EMH20130				
6 to 30	± 0.15	± 0.20									
30 to 120	± 0.20	± 0.25									
120 to 500	± 0.30	± 0.50									

2002378.2005

ITEM NO.	PART NUMBER	DESCRIPTION	QTY.
2	GS-M16x16-DIN1835-B	GRUB SCREW	1
1	FWA100H-EMH20130	HSKA100EM20130WW	1

1 2 3 4 5 6 7 8