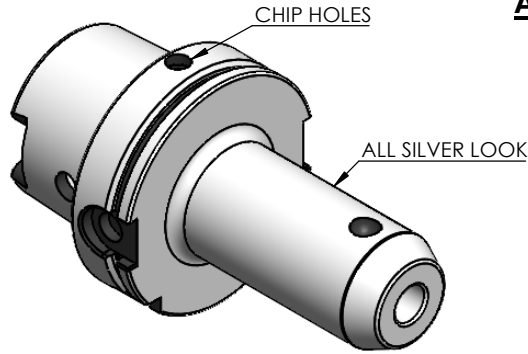


All Dimensions are in MM



For Customer Approval

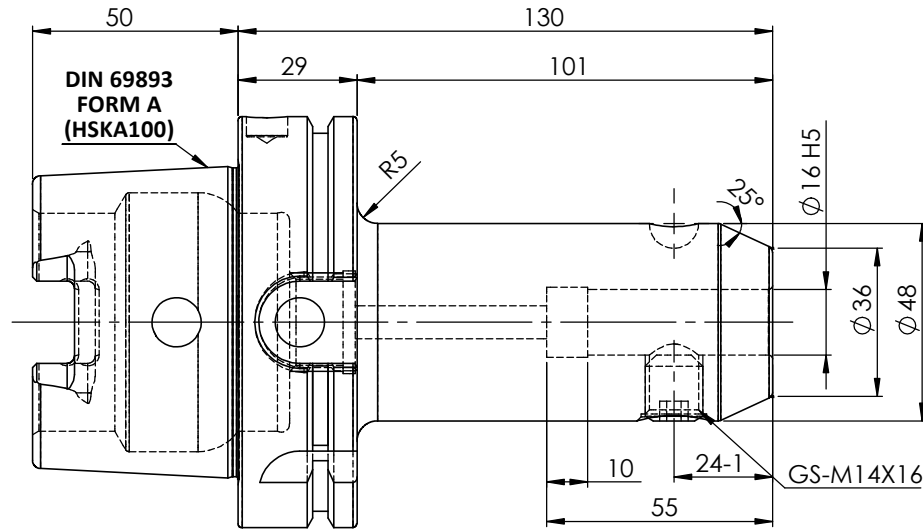
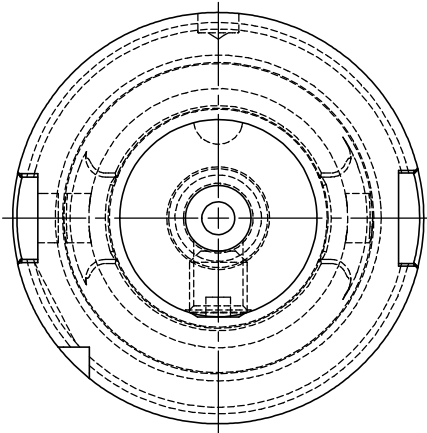


TABLE :

**91100A-WE816130
WELDON-AUFNAHME
WELDON HOLDER
DIN69893 HSKA100A
WE 16mm x 130 mm
G2.5 25000 U/MIN**

**MARKING : DIN 69893 A HSK100A WE16H130
G2.5 25000 U/MIN**

Notes	
Balancing Value	G2.5 @25000RPM
Approx Weight	3.10Kg

	µ m	0.012	0.025	0.05	0.1	0.2	0.4	0.8	1.6	3.2	6.3	12.5	25	50	
GRADES		N1	N2	N3	N4	N5	N6	N7	N8	N9	N10	N11	N12		
SYMBOLS		▽▽▽	▽▽	▽	▽	▽	▽	▽	▽	▽	▽	▽	▽	~	
TOLERANCE		MATERIALS: 16MnCr5													
FREE DIMENSIONS		2017	NAME	DATE	91100A-WE816130										
TOLERANCE		DRAWN	HPK	31/10											
Dimns.	Dia	Length	CHECKED	RVL											31/10
0.5 to 3	± 0.05	± 0.10	APPROVED												
3 to 6	± 0.10	± 0.15	SCALE :	NTS	QTY. :	PART NAME:		DRAWING No.		REV.					
6 to 30	± 0.15	± 0.20	HSKA100EM16130WW		FWA100H-EMH16130		00								
30 to 120	± 0.20	± 0.25													
120 to 500	± 0.30	± 0.50													

ITEM NO.	PART NUMBER	DESCRIPTION	QTY.
2	GS-M14X16-DIN1835-B	GRUB SCREW	1
1	FWA100H-EMH16130	HSKA100EM16130WW	1