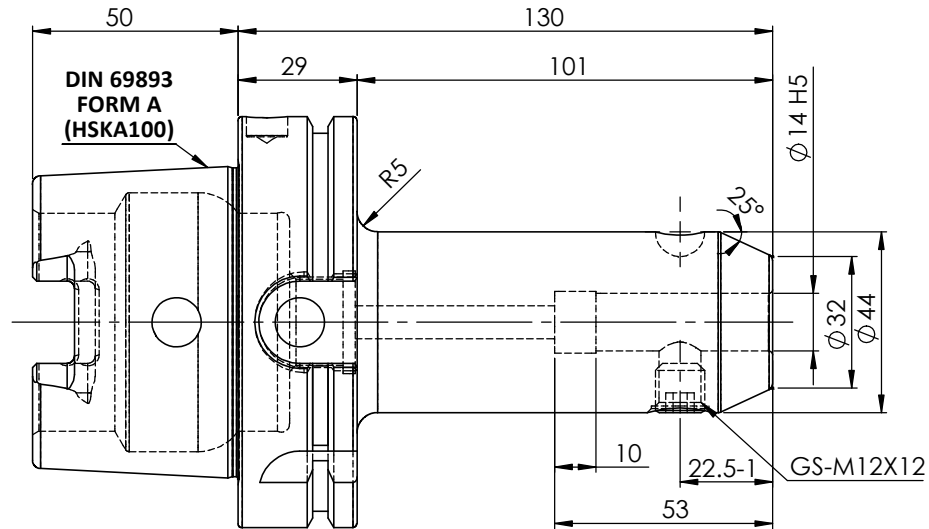
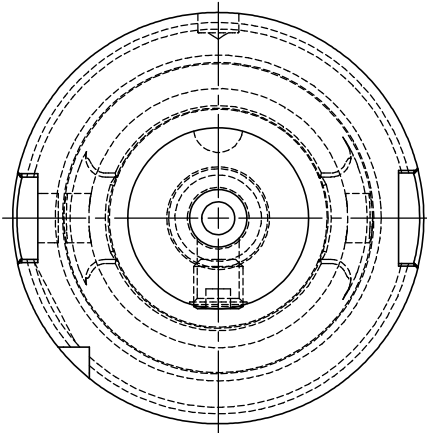
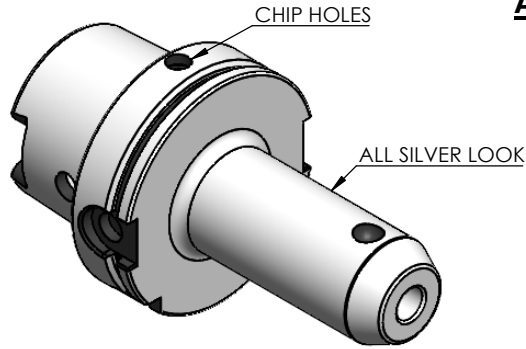


All Dimensions are in MM



For Customer Approval

Rev.No.	Ch.Let	Alterations	Date	Sign.	Appd.

TABLE :

**91100A-WE814130
WELDON-AUFNAHME
WELDON HOLDER
DIN69893 HSKA100A
WE 14mm x 130 mm
G2.5 25000 U/MIN**

**MARKING : DIN 69893 A HSK100A WE14H130
G2.5 25000 U/MIN**

Notes	
Balancing Value	G2.5 @25000RPM
Approx Weight	3.10Kg

TOLERANCE		μ m	0.012	0.025	0.05	0.1	0.2	0.4	0.8	1.6	3.2	6.3	12.5	25	50		
FREE DIMENSIONS		GRADES	N1	N2	N3	N4	N5	N6	N7	N8	N9	N10	N11	N12			
TOLERANCE		SYMBOLS	▽▽▽	▽▽	▽	▽	▽	▽	▽	▽	▽	▽	▽	▽	~		
MATERIALS:		16MnCr5	2017		NAME		DATE		91100A-WE814130								
DRAWN		HPK	31/10		CHECKED		RVL									31/10	
APPROVED				SCALE :		NTS QTY. :											
PART NAME:		HSKA100EM14130WW					DRAWING No.									FWA100H-EMH14130	
Dimns.	Dia	Length	TOLERANCE		TOLERANCE		TOLERANCE										
0.5 to 3	± 0.05	± 0.10	± 0.05		± 0.10		± 0.15										
3 to 6	± 0.10	± 0.15	± 0.10		± 0.15		± 0.20										
6 to 30	± 0.15	± 0.20	± 0.15		± 0.20		± 0.25										
30 to 120	± 0.20	± 0.25	± 0.20		± 0.25		± 0.30										
120 to 500	± 0.30	± 0.50	± 0.30		± 0.50		± 0.50										

ITEM NO.	PART NUMBER	DESCRIPTION	QTY.
2	GS-M12X12	GRUB SCREW	1
1	FWA100H-EMH14130	HSKA100EM14130WW	1