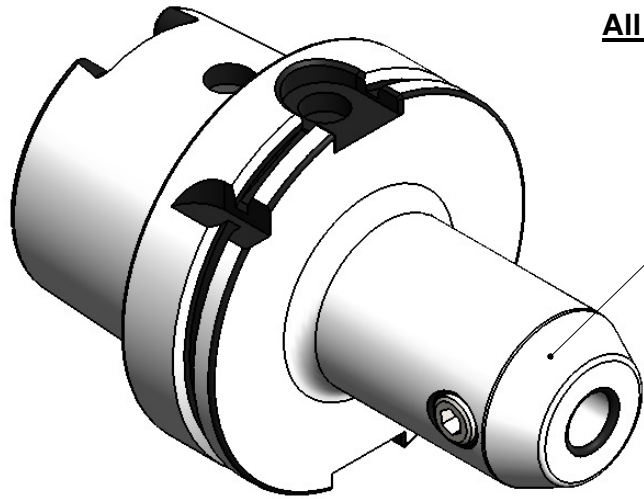
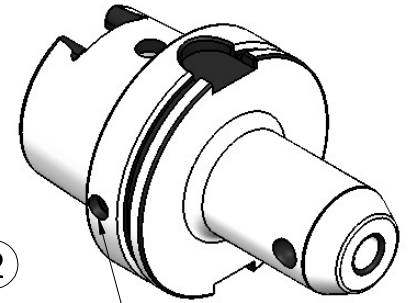
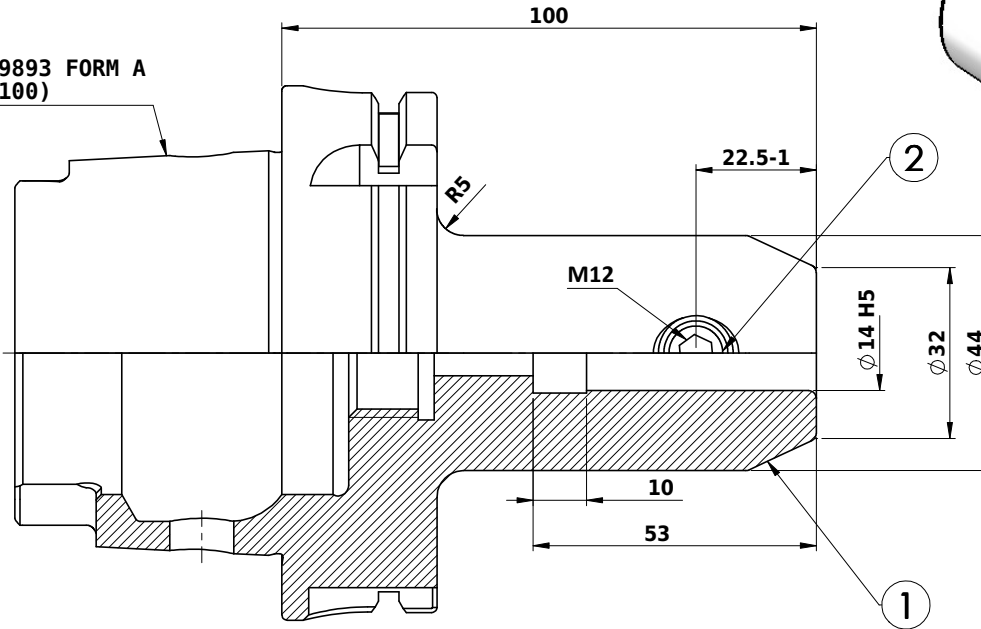


All Dimensions are in MM



ALL SILVER LOOK

DIN 69893 FORM A (HSA100)



CHIP HOLE

Label :

91100A-WE8 14100
WELDON-AUFNAHME
WELDON HOLDER
DIN69893 HSK100A
WE 14 mm x 100 mm
G2,5 / 25000

**MARKING : DIN 69893 A HSK100A WE14H100
G2.5 25000 U/MIN**

NOTE :

BALANCING 2.5G AT 25000 RPM

WEIGHT : 2.9 kg

ITEM NO.	PART NUMBER	DESCRIPTION	QTY.
1	HSKA100 EM 14 100 WW	END MILL HOLDER	1
2	GS-M12X16-DIN1835-B	GRUB SCREW (B.O.)	1

Rev.No.	Ch.Let	Alterations	Date	Sign.	Appd.

CUSTOMER APPROVAL REQUIRED

APPROVED BY

DATE

FOR QUOTATION PURPOSE ONLY

	μ m	0.012	0.025	0.05	0.1	0.2	0.4	0.8	1.6	3.2	6.3	12.5	25	50
GRADES		N1	N2	N3	N4	N5	N6	N7	N8	N9	N10	N11	N12	
SYMBOLS		▽▽▽▽	▽▽▽▽	▽▽▽▽	▽▽▽▽	▽▽▽▽	▽▽▽▽	▽▽▽▽	▽▽▽▽	▽▽▽▽	▽▽▽▽	▽▽▽▽	▽▽▽▽	▽
TOLERANCE		MATERIALS:												
FREE DIMENSIONS		16MnCr5												
TOLERANCE		2015 NAME DATE												
Dimns.	Dia	Length	DRAWN MHP 29/06											
0.5 to 3	± 0.05	± 0.10	CHECKED RVL 29/06											
3 to 6	± 0.10	± 0.15	APPROVED -											
6 to 30	± 0.15	± 0.20	SCALE : NTS QTY. :											
30 to 120	± 0.20	± 0.25	PART NAME:											
120 to 500	± 0.30	± 0.50	END MILL HOLDER											
												DRAWING No.		REV.
												91100A-WE8 14100		00
												HSKA100 EM 14 100 WW		