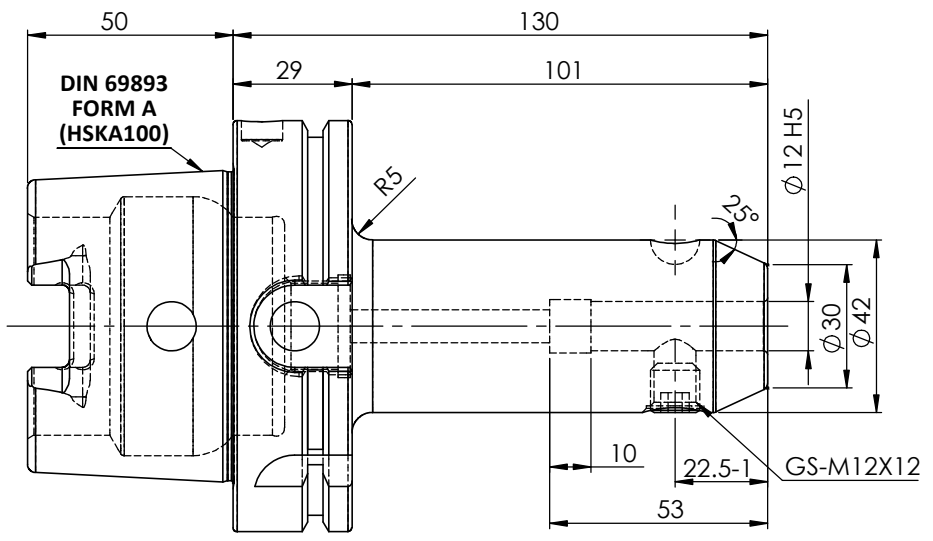
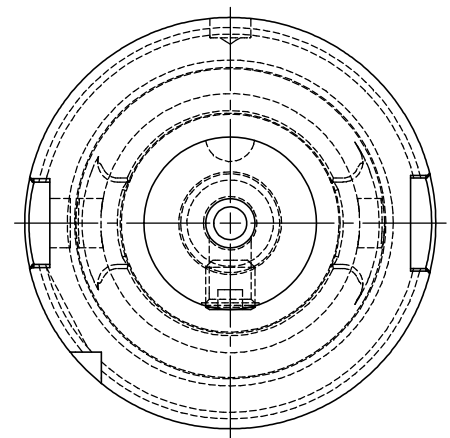
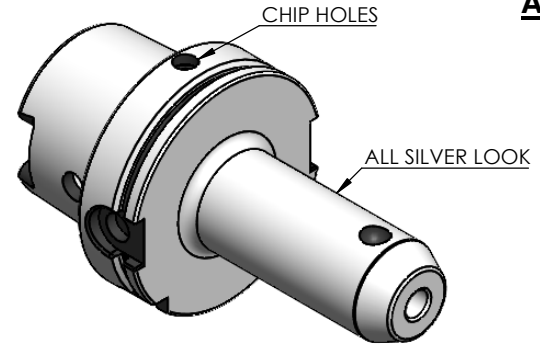


**All Dimensions are in MM**



Rev.No.	Ch.Let	Alterations	Date	Sign.	Appd.

**For Customer Approval**

**TABLE :**

**91100A-WE812130  
WELDON-AUFNAHME  
WELDON HOLDER  
DIN69893 HSKA100A  
WE 12mm x 130 mm  
G2.5 25000 U/MIN**

**MARKING : DIN 69893 A HSK100A WE12H130  
G2.5 25000 U/MIN**

Notes	
Balancing Value	G2.5 @25000RPM
Approx Weight	3.00Kg

	μ m	0.012	0.025	0.05	0.1	0.2	0.4	0.8	1.6	3.2	6.3	12.5	25	50
GRADES		N1	N2	N3	N4	N5	N6	N7	N8	N9	N10	N11	N12	
SYMBOLS		▽▽▽	▽▽	▽	▽	▽	▽	▽	▽	▽	▽	▽	▽	~
TOLERANCE		MATERIALS:		2017	NAME	DATE	<b>91100A-WE812130</b>							
FREE DIMENSIONS		16MnCr5		DRAWN	HPK	31/10								
TOLERANCE				CHECKED	RVL	31/10								
Dimns.	Dia	Length		APPROVED										
0.5 to 3	± 0.05	± 0.10		SCALE : NTS	QTY. :									
3 to 6	± 0.10	± 0.15		<b>PART NAME:</b>		<b>DRAWING No.</b>	<b>REV.</b>							
6 to 30	± 0.15	± 0.20		<b>HSKA100EM12130WW</b>		<b>FWA100H-EMH12130</b>	<b>00</b>							
30 to 120	± 0.20	± 0.25												
120 to 500	± 0.30	± 0.50												

ITEM NO.	PART NUMBER	DESCRIPTION	QTY.
2	GS-M12X12	GRUB SCREW	1
1	FWA100H-EMH12130	HSKA100EM12130WW	1