

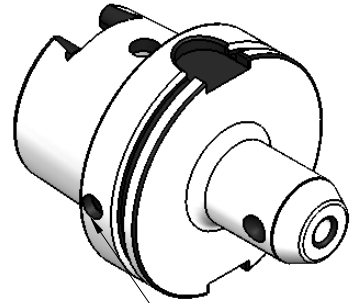
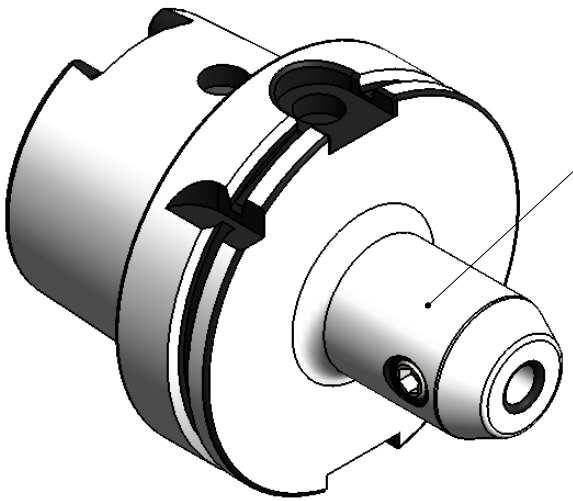
5	6	7	8
Rev.No.	Ch.Let	Alterations	Date

All Dimensions are in MM

ALL SILVER LOOK

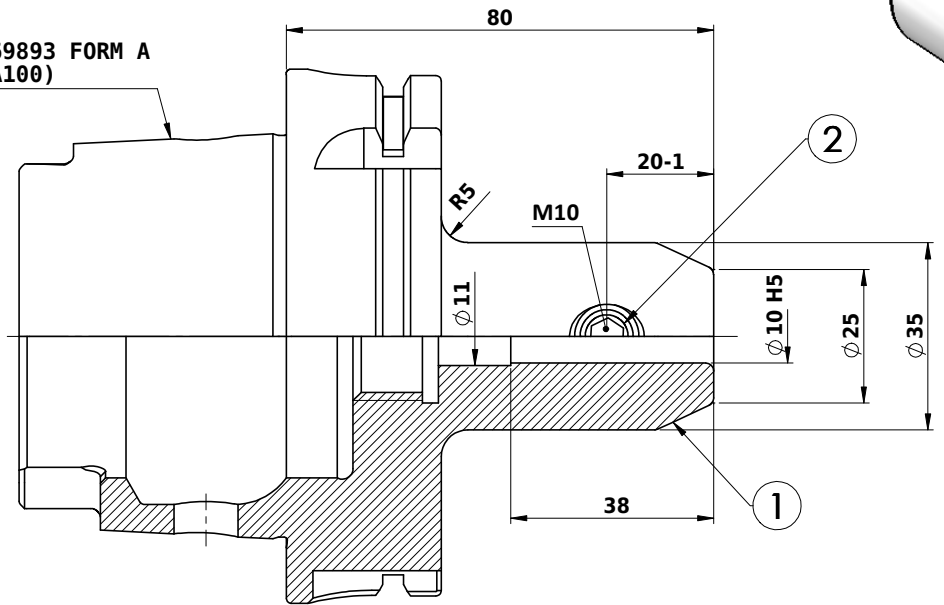
CUSTOMER APPROVAL REQUIRED	
APPROVED BY	
DATE	

FOR QUOTATION PURPOSE ONLY



CHIP HOLE

DIN 69893 FORM A (HKA100)



Label :

2002378.1000
WELDON-AUFNAHME
WELDON HOLDER
DIN69893 HSK100A
WE 10 mm x Ø80 mm
G2,5 / 25000

**MARKING : DIN 69893 A HSK100A WE10HØ80
G2.5 25000 U/MIN**

NOTE :

BALANCING 2.5G AT 25000 RPM

WEIGHT : 2.5 kg

µ m	0.012	0.025	0.05	0.1	0.2	0.4	0.8	1.6	3.2	6.3	12.5	25	50
GRADES	N1	N2	N3	N4	N5	N6	N7	N8	N9	N10	N11	N12	
SYMBOLS	▽▽▽▽▽▽▽▽▽▽▽▽												
TOLERANCE	MATERIALS: 2015 NAME DATE												
FREE DIMENSIONS	16MnCr5 DRAWN MHP 29/06												
TOLERANCE	CHECKED RVL 29/06												
Dimns.	Dia	Length	APPROVED -										
0.5 to 3	± 0.05	± 0.10	SCALE : NTS QTY. :										
3 to 6	± 0.10	± 0.15	PART NAME: END MILL HOLDER										
6 to 30	± 0.15	± 0.20	DRAWING No. HSKA100 EM 10 080 WW										
30 to 120	± 0.20	± 0.25	REV. 00										
120 to 500	± 0.30	± 0.50											

ITEM NO.	PART NUMBER	DESCRIPTION	QTY.
1	HSKA100 EM 10 080 WW	END MILL HOLDER	1
2	GS-M10X12-DIN1835-B	GRUB SCREW-(B.O)	1