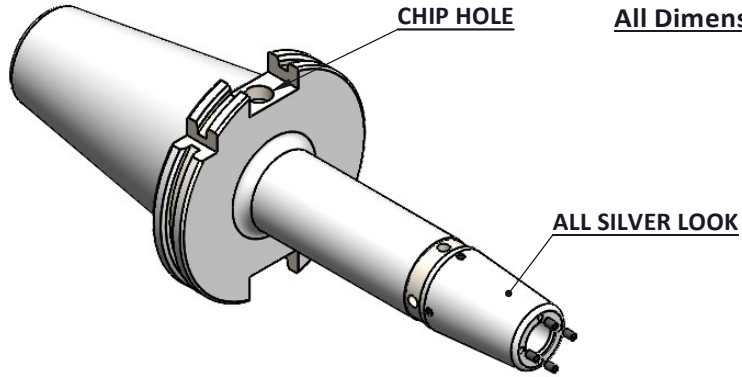


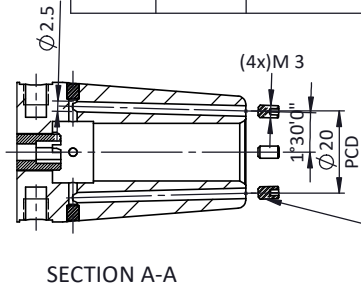
All Dimensions are in MM



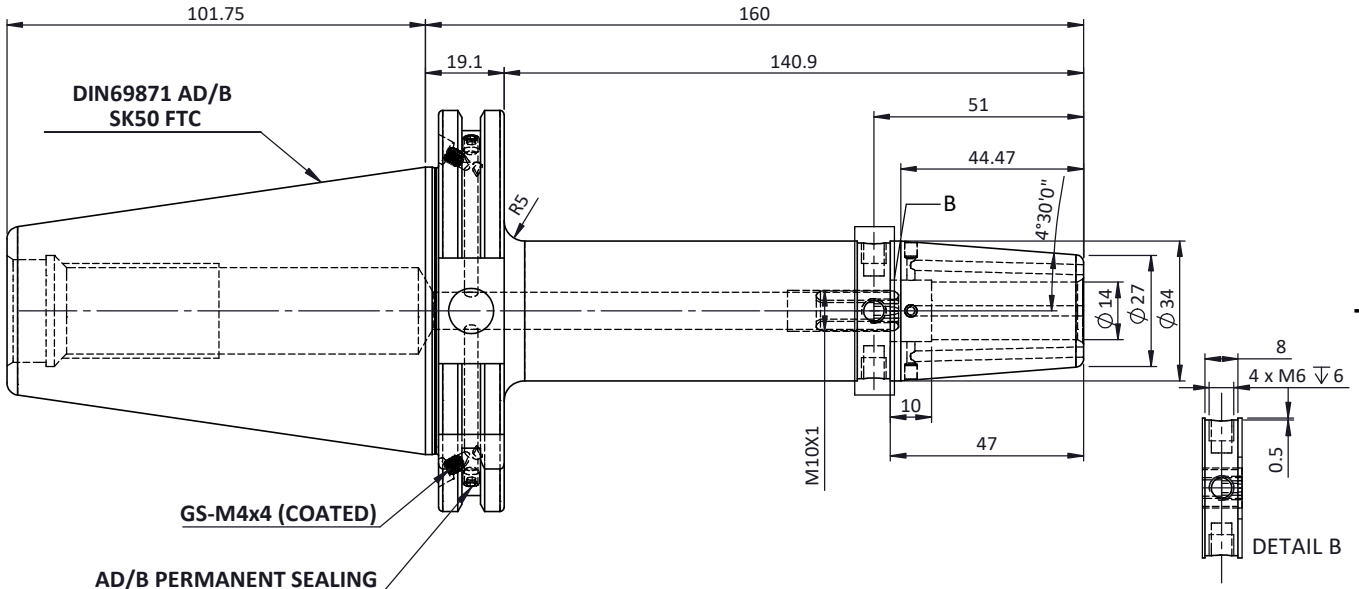
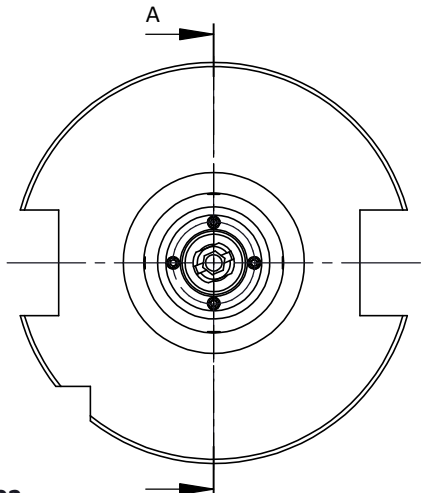
Rev.No	Ch.Let	Alterations	Date	Sign.	Appd.

For Customer Approval

SCREWS TO BE PACKED SEPERATELY IN PLASTIC POUCH WITH LABEL & PUT INTO BORE & THEN SEAL THE HOLDER WITH COVER
 LABEL FOR PLASTIC BAGS:
 Verschlusschraube
 Grub Screw
 M3 X 5mm X1.5mm



SECTION A-A



DETAIL B

LABEL :
 2002374.1402
 SCHRUMPFUTTER MIT KK
 SHRINK FIT HOLDER COOLANT CHANNEL
 ISO 7388-1 (DIN69871) SK50 AD/AF (AD+B)
 SR4 14mm X 160mm
 G2,5/25000 U/MIN

MARKING : ISO7388-1 (DIN69871) SK50 AD/AF (AD+B) SFHC14H160
 G2,5/25000 U/MIN

Notes	
Balancing Value	G2.5 @25000RPM
Approx Weight	3.3Kg

ITEM NO.	PART NUMBER	DESCRIPTION	QTY.
6	GS-M3X5	GRUB SCREW	4
5	GS-M4X4 COATED	GRUB SCREW	2
4	GS-M4X4	GRUB SCREW-(B.O)	2
3	EXPANDER PLUG	EXPANDER PLUG-Ø3x3.6mm	4
2	SCWM10x1x20-FLAT	STOPPER SCREW - M10X1	1
1	F1S509H-SFK14160	SK50SFK14160FWW	1

TOLERANCE	µ m	GRADES											
		0.012	0.025	0.05	0.1	0.2	0.4	0.8	1.6	3.2	6.3	12.5	25
FREE DIMENSIONS		N1	N2	N3	N4	N5	N6	N7	N8	N9	N10	N11	N12
TOLERANCE		SYMBOLS											
MATERIALS:		2024		NAME		DATE		2002374.1402					
HDS		DRAWN		KATHIR		30/08							
		CHECKED		RVL		30/08							
Dimns.	Dia	Length	SCALE : NTS		QTY. :		DRAWING No. F1S509H-SFK14160						
0.5 to 3	±0.05	±0.10											
3 to 6	±0.10	±0.15											
6 to 30	±0.15	±0.20											
30 to 120	±0.20	±0.25	PART NAME:		DRAWING No.		REV. 00						
120 to 500	±0.30	±0.50	SK50SFK14160FWW		F1S509H-SFK14160								