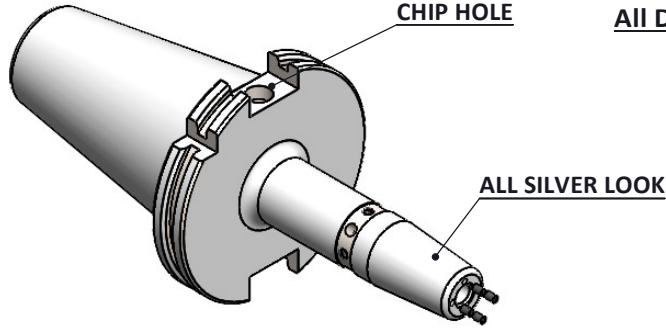
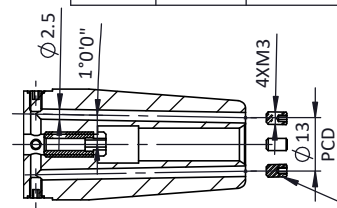


All Dimensions are in MM



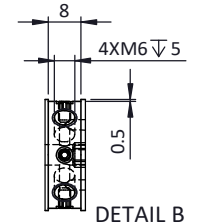
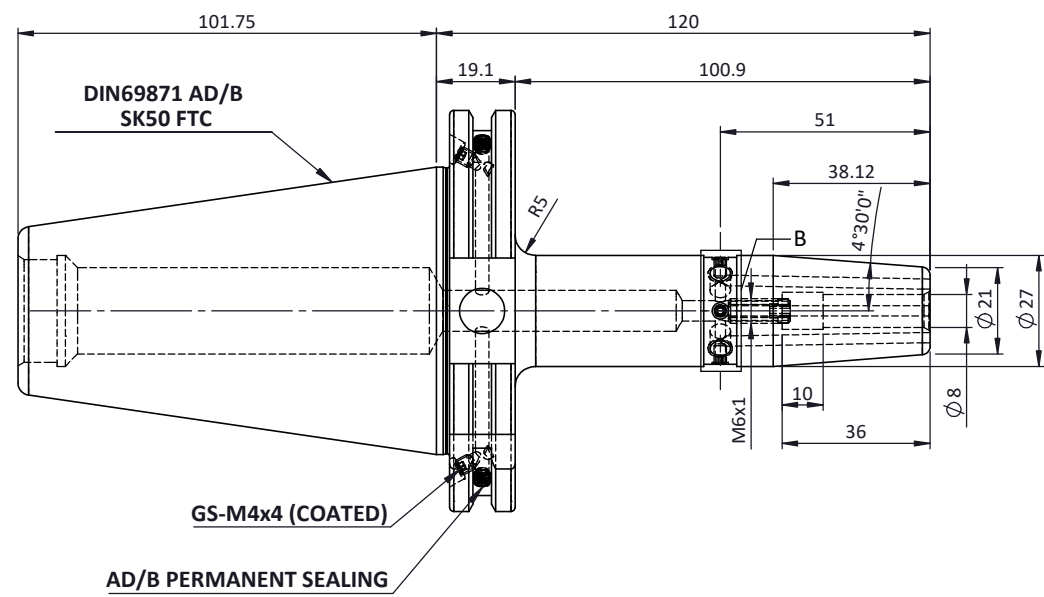
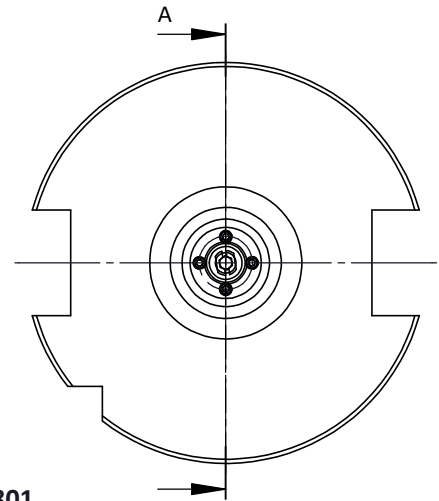
Rev.No	Ch.Let	Alterations	Date	Sign.	Appd.

For Customer Approval



SCREWS TO BE PACKED SEPARATELY IN PLASTIC POUCH WITH LABEL & PUT INTO BORE & THEN SEAL THE HOLDER WITH COVER LABEL FOR PLASTIC BAGS:
Verschlusschraube
Grub Screw
M3 X 5mm X1.5mm

SECTION A-A



LABEL :
2002374.0801
SCHRUMPFUTTER MIT KK
SHRINK FIT HOLDER COOLANT CHANNEL
ISO 7388-1 (DIN69871) SK50 AD/AF (AD+B)
SR4 08mm X 120mm
G2,5/25000 U/MIN

MARKING : ISO7388-1 (DIN69871) SK50 AD/AF (AD+B) SFHC08H120
G2,5/25000 U/MIN

Notes	
Balancing Value	G2.5 @25000RPM
Approx Weight	2.8Kg

ITEM NO.	PART NUMBER	DESCRIPTION	QTY.
6	GS-M3X3	GRUB SCREW	4
5	GS-M3X5	GRUB SCREW	4
4	GS-M4X4 COATED	GRUB SCREW	2
3	GS-M4X4	GRUB SCREW-(B.O)	2
2	SCWM6X15-FS	STOPPER SCREW M6	1
1	F1S509H-SFK08120	SK50SFK08120FWW	1

TOLERANCE	Dimns.	Dia	Length	GRADES											
				0.12	0.25	0.05	0.1	0.2	0.4	0.8	1.6	3.2	6.3	12.5	25
FREE DIMENSIONS				N1	N2	N3	N4	N5	N6	N7	N8	N9	N10	N11	N12
TOLERANCE				SYMBOLS											
MATERIALS:	HDS			2022			NAME			DATE					
				DRAWN			SVR			16/04					
				CHECKED			RVL			16/04					
				APPROVED											
				SCALE : NTS			QTY. :								
PART NAME:										DRAWING No.		REV.			
SK50SFK08120FWW										F1S509H-SFK08120		01			

2002374.0801