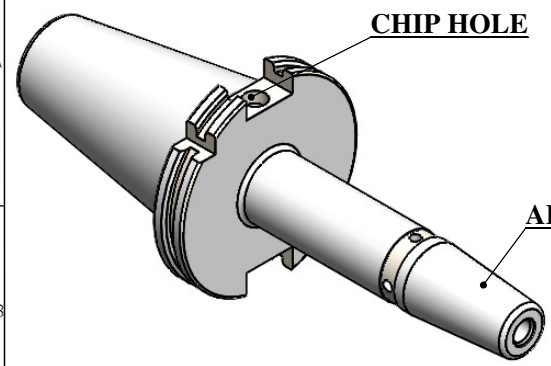
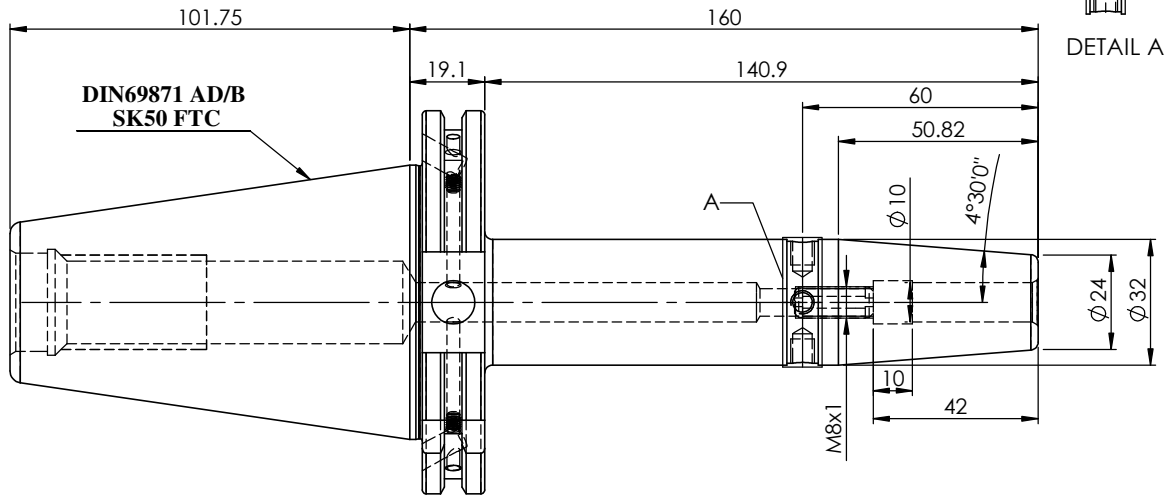
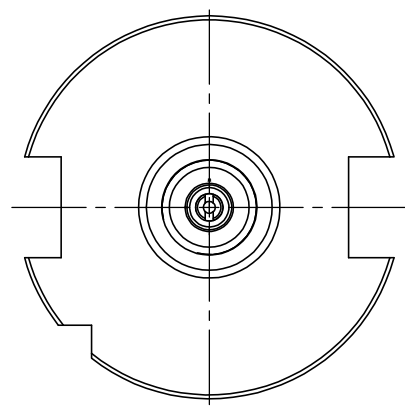
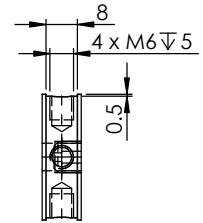


Rev.No	Ch.Let	Alterations	Date	Sign.	Appd.



All Dimensions are in MM



**LABEL :**  
**2002373.1002**  
**SCHRUMPFUTTER**  
**SHRINK FIT HOLDER**  
**ISO 7388-1(DIN69871) SK50 AD/AF (AD+B)**  
**SR2 10mm X 160mm**  
**G2,5/25000 U/MIN**

**NOTE :**  
**BALANCING 2.5G@ 25000 RPM**

**Weight : 3.2 Kg**

**MARKING : ISO7388-1(DIN69871) SK50 AD/AF (AD+B) SR10 H160**  
**G2,5/25000 U/MIN**

µm	0.012	0.025	0.05	0.1	0.2	0.4	0.8	1.6	3.2	6.3	12.5	25	50
GRADES	N1	N2	N3	N4	N5	N6	N7	N8	N9	N10	N11	N12	
SYMBOLS	▽▽▽▽	▽▽▽	▽▽	▽	~								

ITEM NO.	PART NUMBER	DESCRIPTION	QTY.
1	F1S509H-SFC10160	SK50SFC10160FWW	1
2	SCWM8x1X20	STOPPER SCREW	1
3	GS-M4X4-COATING	GRUB SCREW	2

TOLERANCE FREE DIMENSIONS TOLERANCE	MATERIALS: HDS	2023	NAME	DATE	<b>2002373.1002</b>	
Dimns. Dia Length	0.5 to 3 ±0.05 ±0.10	3 to 6 ±0.10 ±0.15	6 to 30 ±0.15 ±0.20	30 to 120 ±0.20 ±0.25		120 to 500 ±0.30 ±0.50
SCALE : NTS	QTY. :					
PART NAME:	SK50SFC 10160FWW	DRAWN SVR	02/11	CHECKED RVL		02/11
DRAWING No.				REV.		
F1S509H-SFC 10160				.00		