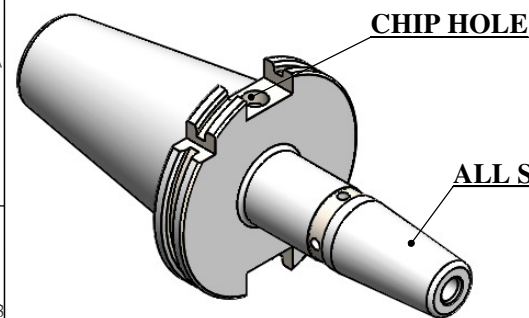
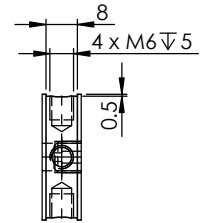


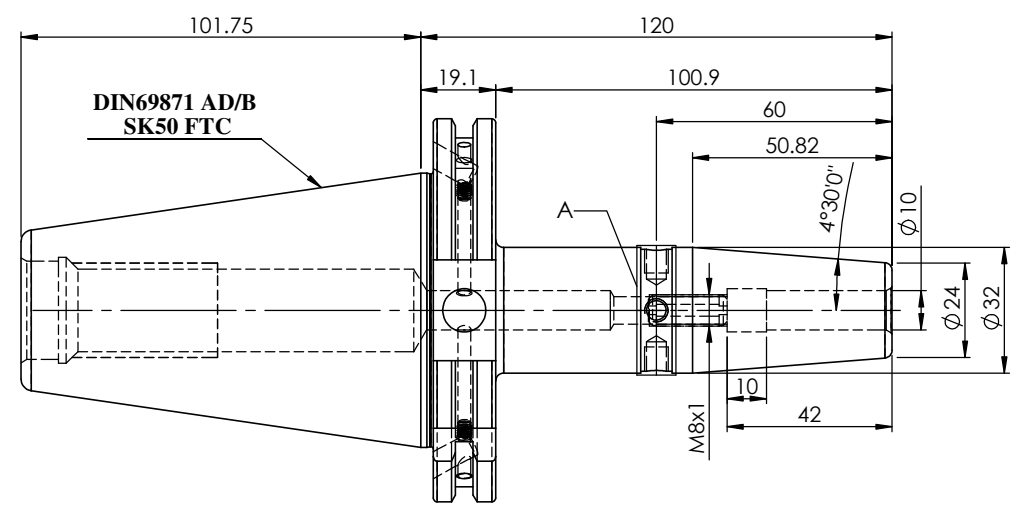
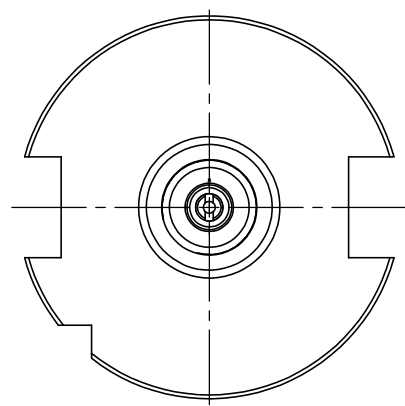
Rev.No	Ch.Let	Alterations	Date	Sign.	Appd.



All Dimensions are in MM



DETAIL A



LABEL :
2002373.1001
SCHRUMPFUTTER
SHRINK FIT HOLDER
ISO 7388-1(DIN69871) SK50 AD/AF (AD+B)
SR2 10mm X 120mm
G2,5/25000 U/MIN

MARKING : ISO7388-1(DIN69871) SK50 AD/AF (AD+B) SR10 H120
G2,5/25000 U/MIN

NOTE :
BALANCING 2.5G@ 25000 RPM

Weight : 3.0 Kg

μm	0.012	0.025	0.05	0.1	0.2	0.4	0.8	1.6	3.2	6.3	12.5	25	50
GRADES	N1	N2	N3	N4	N5	N6	N7	N8	N9	N10	N11	N12	
SYMBOLS	▽▽▽▽	▽▽▽	▽▽	▽	~								

ITEM NO.	PART NUMBER	DESCRIPTION	QTY.
1	FIS509H-SFC10120	SK50SFC10120FWW	1
2	SCWM8x1X20	STOPPER SCREW	1
3	GS-M4X4-COATING	GRUB SCREW	2

TOLERANCE	MATERIALS:	2023	NAME	DATE
FREE DIMENSIONS	HDS	DRAWN	SVR	02/11
TOLERANCE		CHECKED	RVL	02/11
		APPROVED		
		SCALE : NTS	QTY. :	
Dimns.		PART NAME:		
Dia		SK50SFC 10120FWW		
Length		DRAWING No.		
0.5 to 3	±0.05 ±0.10	F1S509H-SFC 10120		
3 to 6	±0.10 ±0.15	REV.		
6 to 30	±0.15 ±0.20	.00		
30 to 120	±0.20 ±0.25			
120 to 500	±0.30 ±0.50			