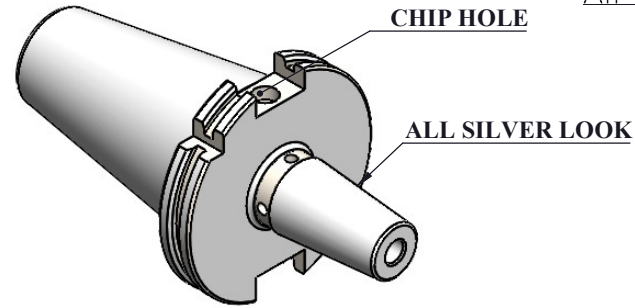
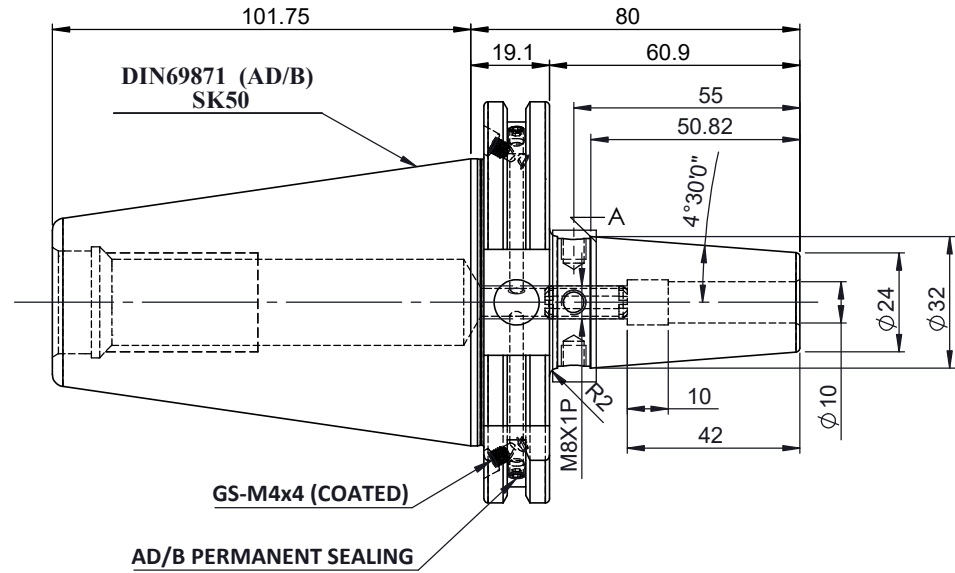
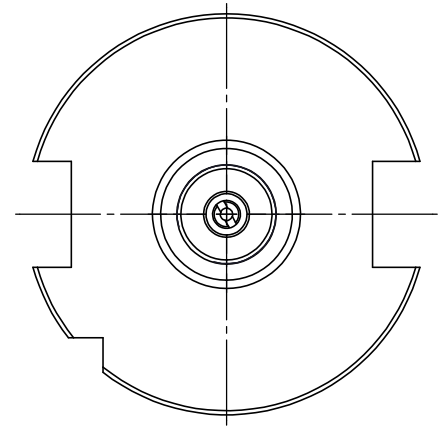
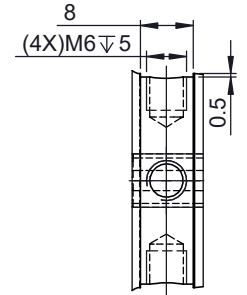


All Dimensions are in MM

Rev.No	Ch.Let	Alterations	Date	Sign.	Appd.



For Customer Approval



LABEL :

2002373.1000
SCHRUMPFUTTER
SHRINK FIT HOLDER
ISO 7388-1 (DIN69871) SK50 AD/AF (AD+B)
SR2 10mm X 080mm
G2,5/25000 U/MIN

MARKING : ISO 7388-1 (DIN69871) SK50 AD/AF (AD+B) SR10 H080
G2,5/25000 U/MIN

Notes	
Balancing Value	G2.5 @25000RPM
Approx Weight	2.8Kg

μ m	0.012	0.025	0.05	0.1	0.2	0.4	0.8	1.6	3.2	6.3	12.5	25	50
GRADES	N1	N2	N3	N4	N5	N6	N7	N8	N9	N10	N11	N12	
SYMBOLS	∇	∇	∇	∇	∇	∇	∇	∇	∇	∇	∇	∇	∇

TOLERANCE	MATERIALS:	2024	NAME	DATE
FREE DIMENSIONS	HDS	DRAWN	SVR	26/03
TOLERANCE		CHECKED	RVL	26/03
		APPROVED		

Dimns.	Dia	Length	SCALE : NTS	QTY. :
0.5 to 3	±0.05	±0.10		
3 to 6	±0.10	±0.15		
6 to 30	±0.15	±0.20		
30 to 120	±0.20	±0.25		
120 to 500	±0.30	±0.50		

PART NAME:	DRAWING No.	REV.
SK50SFC 10080F	F1S509H-SFC 10080	00

ITEM NO.	PART NUMBER	DESCRIPTION	QTY.
4	SCWM8X1X20	STOPPER SCREW	1
3	GS-M4X4 COATED	GRUB SCREW	2
2	GS-M4X4	GRUB SCREW-(B.O)	2
1	F1S509H-SFC10080	SK40SFC10080FWW	1