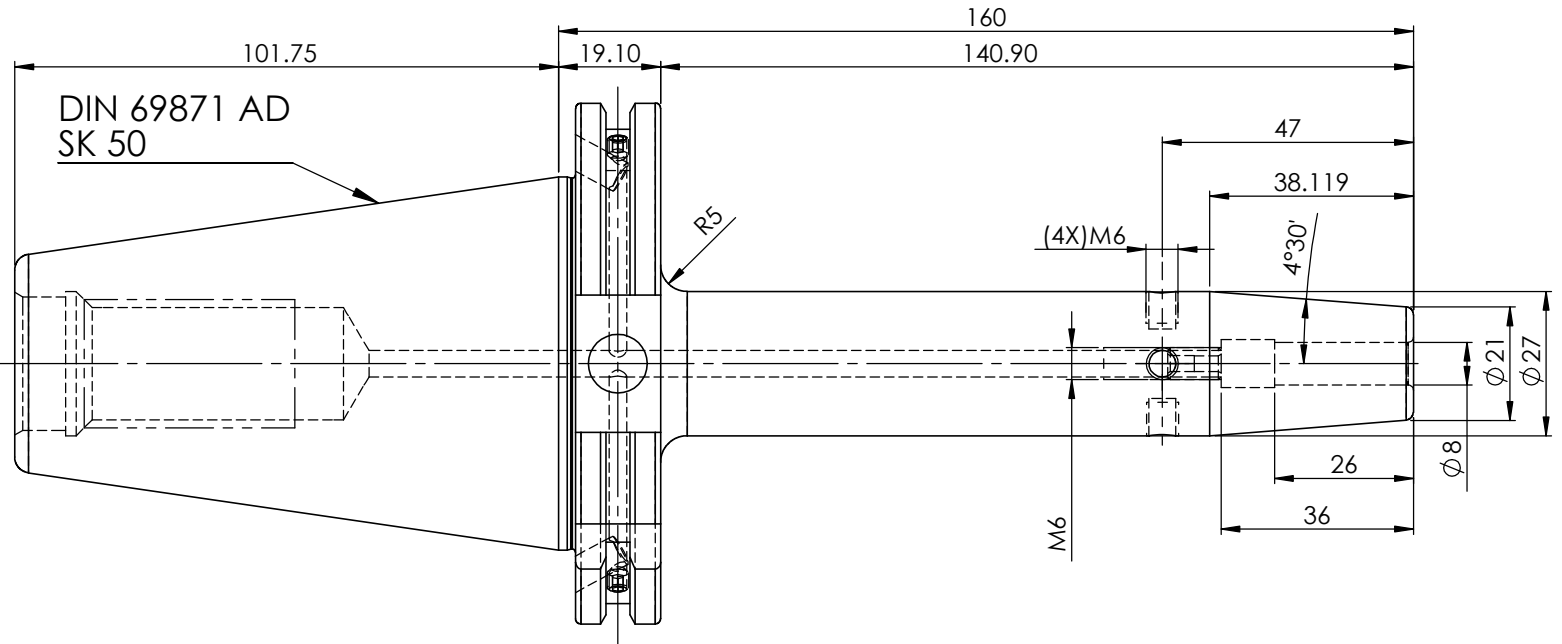
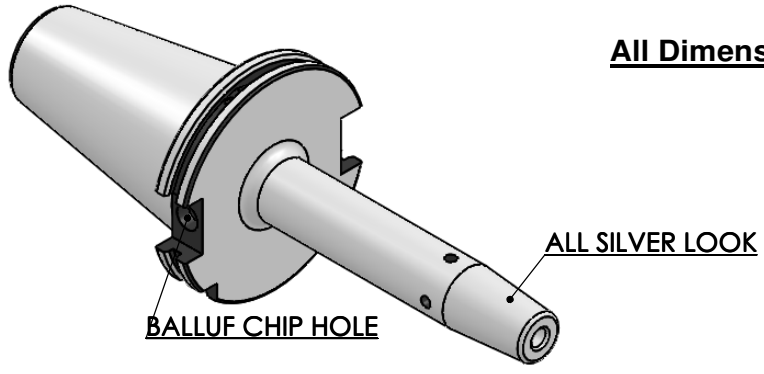


5	6	7	8
Rev.No.	Ch.Let	Alterations	Date

**All Dimensions are in MM**



**Labeling:**

2002373.0802  
**SCHRUMPFUTTER**  
**SHRINK FIT HOLDER**  
**DIN 69871 SK50 AD+B**  
**SR 08mm X 160 mm**  
**G2,5 25,000 U/MIN**

**Marking:**

**DIN69871AD&B SK50 SFH08160 G2,5 25000**

Weight : 3.2 kg

BALANCING 2.5G@ 25000 RPM

ITEM NO.	PART NUMBER	DESCRIPTION	QTY.
1	FWS509H-SFC08160	SK50SFC08160FWW	1
2	SCWM8X1	STOPPER SCREW (B.O.)	1
3	GS-M4 x 4	GRUB SCREW(B.O.)	2

µ m	0.012	0.025	0.05	0.1	0.2	0.4	0.8	1.6	3.2	6.3	12.5	25	50	
GRADES	N1	N2	N3	N4	N5	N6	N7	N8	N9	N10	N11	N12		
SYMBOLS	▽▽▽			▽▽▽			▽▽			▽			~	
<b>TOLERANCE FREE DIMENSIONS</b>		<b>MATERIALS:</b>		<b>2020</b>		<b>NAME</b>		<b>DATE</b>		<b>2002373.0802</b>				
<b>TOLERANCE</b>		<b>HDS</b>		<b>DRAWN</b>		<b>PGK</b>		<b>21/10</b>						
Dimns.	Dia	Length			<b>CHECKED</b>		<b>RVL</b>		<b>21/10</b>					
0.5 to 3	± 0.05	± 0.10			<b>APPROVED</b>									
3 to 6	± 0.10	± 0.15			<b>SCALE : 1:1</b>		<b>QTY. :</b>		<b>DRAWING No.</b>					
6 to 30	± 0.15	± 0.20			<b>PART NAME:</b>				<b>FWS509H-SFC08160</b>					
30 to 120	± 0.20	± 0.25			<b>SK50SFC08160FWW</b>				<b>REV.</b>					
120 to 500	± 0.30	± 0.50							<b>00</b>					