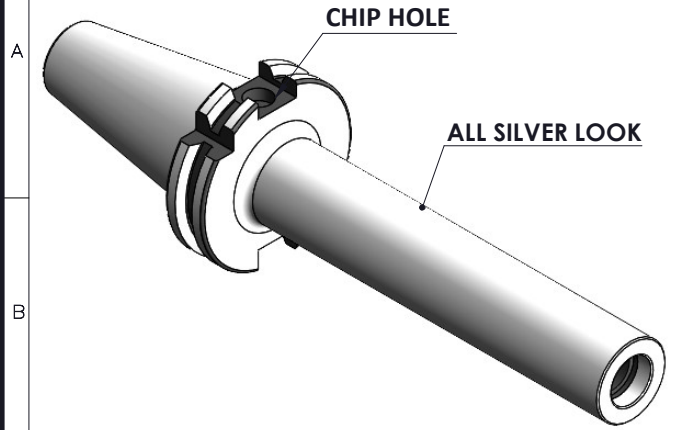
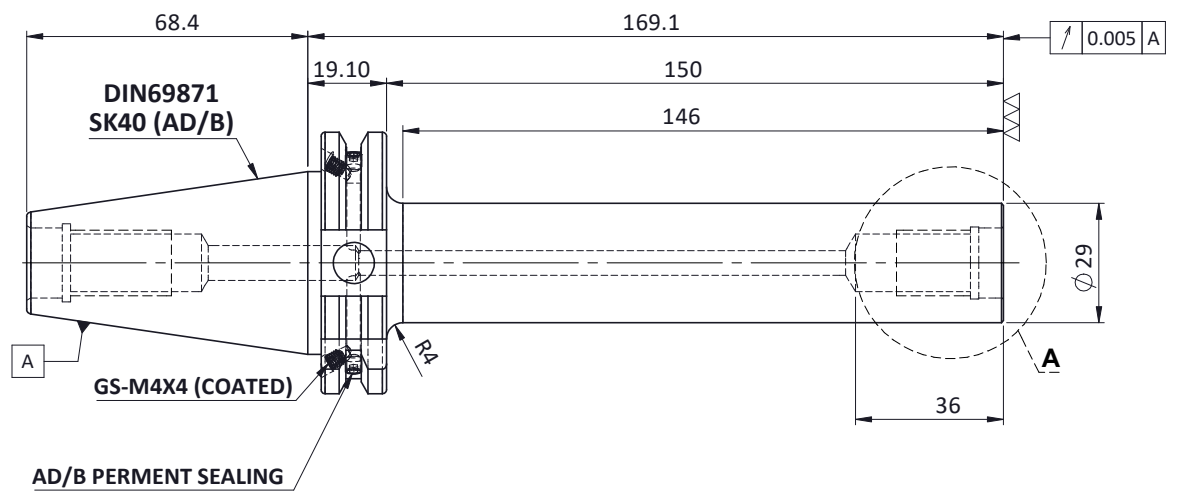
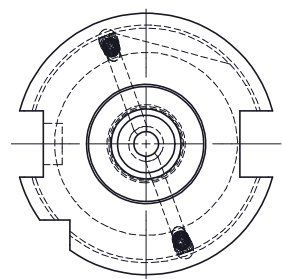
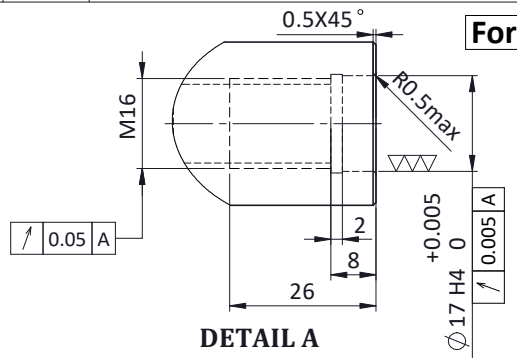


Rev.No.	Ch.Let	Alterations	Date	Sign.	Appd.

All Dimensions are in MM



For Customer Approval



LABEL:-

2002371.1602
EINSCHRAUBFRÄSERAUFNAHME
SCREW-ON HOLDER ZYL/CYL
ISO 7388-1 (DIN69871) SK40 AD/AF (AD+B)
ESS M16 x 150 mm x 169 mm
G2,5 / 25000 U/MIN

MARKING:- ISO 7388-1 (DIN 69871) SK40 AD/AF M16 x 150 mm
G2,5 25000 U/MIN

ITEM NO.	PART NUMBER	DESCRIPTION	QTY.
3	GS-M4X4 COATED	GRUB SCREW	2
2	GS-M4X4	GRUB SCREW-(B.O)	2
1	FWS409H-TMS16169	SK40TMS16169FWW	1

Notes	
Balancing Value	G2.5 @ 25000RPM
Approx Weight	1.4 Kg

µ m	0.012	0.025	0.05	0.1	0.2	0.4	0.8	1.6	3.2	6.3	12.5	25	50
GRADES	N1	N2	N3	N4	N5	N6	N7	N8	N9	N10	N11	N12	
SYMBOLS	▽▽▽			▽▽			▽			~			
TOLERANCE FREE DIMENSIONS TOLERANCE	MATERIALS: 16MnCr5												
Dimns.	Dia	Length	2015		NAME		DATE		2002371.1602 DRAWN SVK 19/07 CHECKED RVL 19/07 APPROVED SCALE : NTS QTY. :				
0.5 to 3	±0.05	±0.10	DRAWN		SVK		19/07						
3 to 6	±0.10	±0.15	CHECKED		RVL		19/07						
6 to 30	±0.15	±0.20	APPROVED										
30 to 120	±0.20	±0.25	PART NAME:					DRAWING No.					REV.
120 to 500	±0.30	±0.50	SK40TMS16169FWW					FWS409H-TMS16169					01