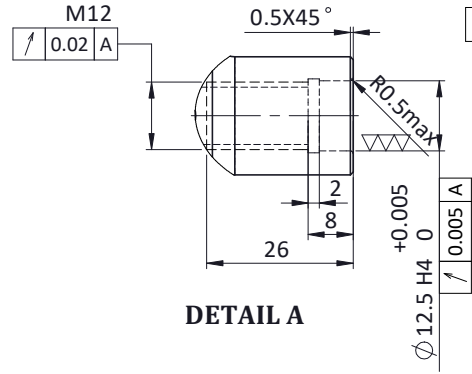
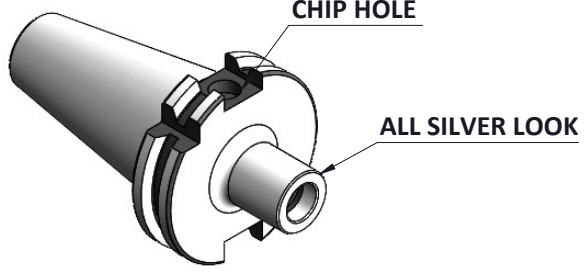
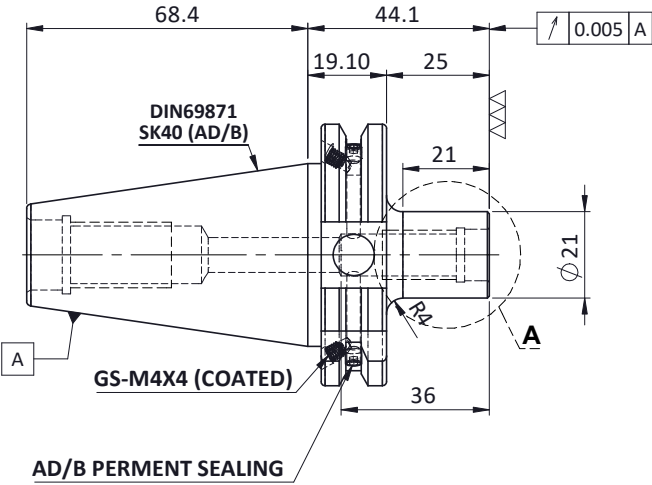
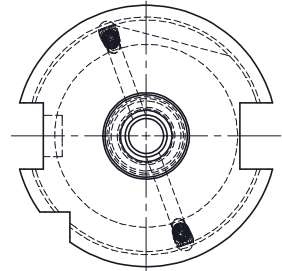


5	6	7	8
Rev.No.	Ch.Let	Alterations	Date

All Dimensions are in MM



For Customer Approval



LABEL:-

2002371.1204
EINSCHRAUBFRÄSERAUFNAHME
SCREW-ON HOLDER ZYL/CYL
ISO 7388-1 (DIN69871) SK40 AD/AF (AD+B)
ESS M12 x 025 mm x 044 mm
G2,5 / 25000 U/MIN

MARKING:- ISO 7388-1 (DIN 69871) SK40 AD/AF M12 x 025 mm
G2,5 25000 U/MIN

3	GS-M4X4 COATED	GRUB SCREW	2
2	GS-M4X4	GRUB SCREW-(B.O)	2
1	FWS409H-TMS12044	SK40TMS12044FWW	1
ITEM NO.	PART NUMBER	DESCRIPTION	QTY.

Notes	
Balancing Value	G2.5 @ 25000RPM
Approx Weight	0.8 Kg

		µ m	0.012	0.025	0.05	0.1	0.2	0.4	0.8	1.6	3.2	6.3	12.5	25	50
		GRADES	N1	N2	N3	N4	N5	N6	N7	N8	N9	N10	N11	N12	
		SYMBOLS	▽▽▽	▽▽	▽	▽	▽	▽	▽	▽	▽	▽	▽	▽	~
		TOLERANCE	MATERIALS:		2019	NAME	DATE	2002371.1204							
		FREE DIMENSIONS	16MnCr5		DRAWN	AMK	02/05								
		TOLERANCE			CHECKED	RVL	02/05								
					APPROVED										
		Dimns.	Dia	Length	SCALE : NTS		QTY. :	PART NAME: SK40TMS12044FWW							
		0.5 to 3	±0.05	±0.10											
		3 to 6	±0.10	±0.15											
		6 to 30	±0.15	±0.20											
		30 to 120	±0.20	±0.25				DRAWING No. FWS409H-TMS12044							
		120 to 500	±0.30	±0.50											