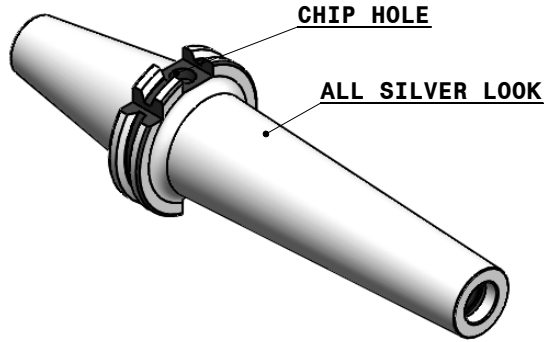
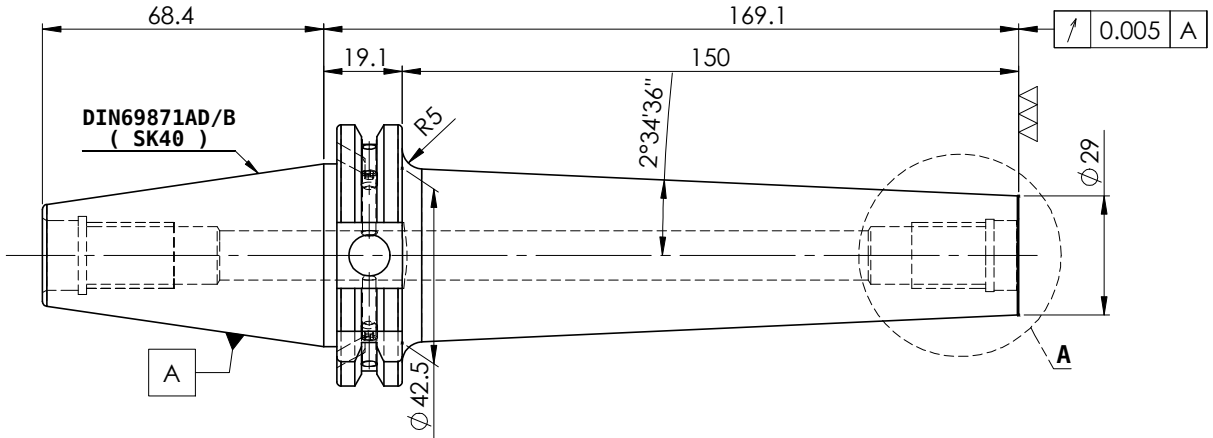
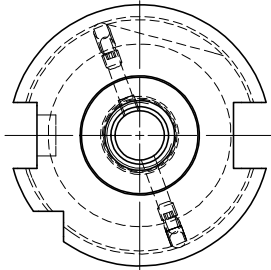
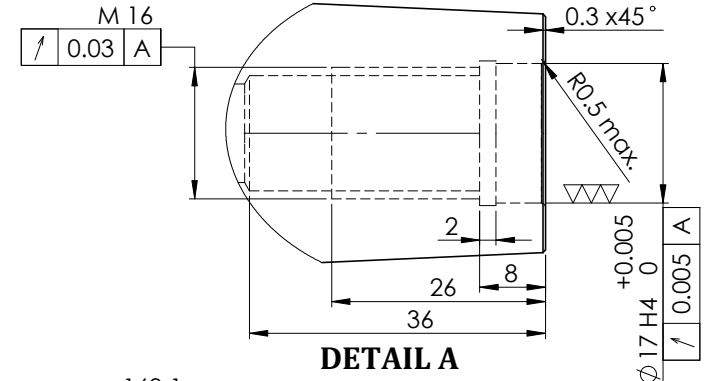


**All Dimensions are in MM**



Rev.No.	Ch.Let	Alterations	Date	Sign.	Appd.



DIN69871AD/B  
( SK40 )

**LABEL:-**

2002369.1602  
EINSCHRAUBFRÄSERAUFNAHME  
SCREW-ON HOLDER  
ISO 7388-1 (DIN69871) SK40 AD/AF (AD+B)  
ES M16 x 150 mm x 169 mm  
G2,5 / 25000 U/MIN

**MARKING:- ISO 7388-1 (DIN 69871) SK40 AD/AF (AD+B) M16 x 150mm  
G2,5 25000 U/MIN**

**NOTE:**

**WEIGHT : 1.8Kg**

**BALANCING 2.5 G @ 25000 RPM**

µ m	0.012	0.025	0.05	0.1	0.2	0.4	0.8	1.6	3.2	6.3	12.5	25	50
GRADES	N1	N2	N3	N4	N5	N6	N7	N8	N9	N10	N11	N12	

TOLERANCE FREE DIMENSIONS TOLERANCE			MATERIALS: 16MnCr5		2022	NAME	DATE
Dimns.	Dia	Length			DRAWN	SVR	10/01
0.5 to 3	± 0.05	± 0.10			CHECKED	RVL	10/01
3 to 6	± 0.10	± 0.15			APPROVED		
6 to 30	± 0.15	± 0.20			SCALE :	NTS	QTY. :
30 to 120	± 0.20	± 0.25			PART NAME: SK40TMH16169FWW		
120 to 500	± 0.30	± 0.50			DRAWING No. FWS409H-TMH16169		

**2002369.1602**

ITEM NO.	PART NUMBER	DESCRIPTION	QTY.
1	FWS409H-TMH16169	SK40TMH16169FWW	1
2	GS-M4X4	GRUB SCREW-(B.O)	2

REV. 00