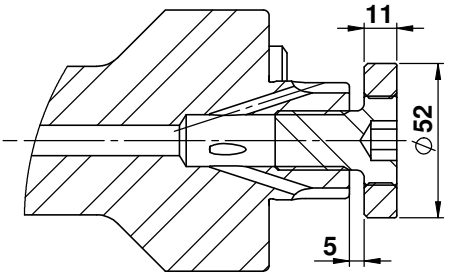
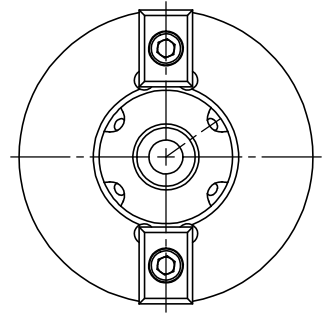
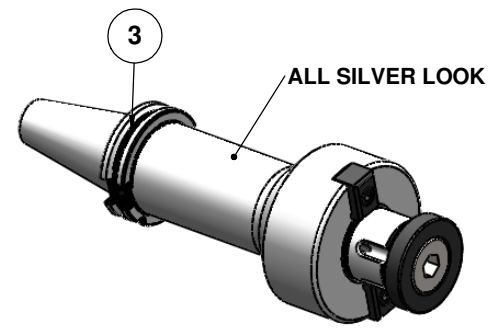


**All Dimensions are in MM**

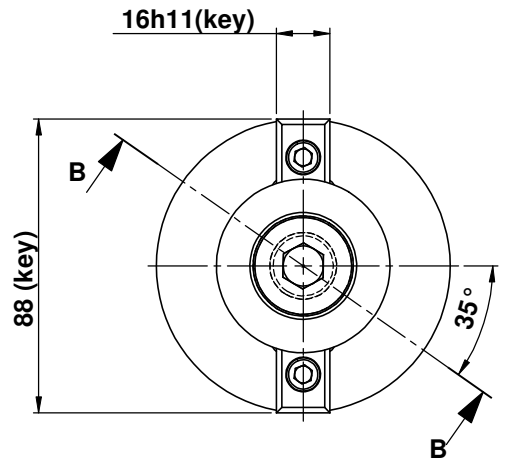
Rev.No.	Ch.Let	Alterations	Date	Sign.	Appd.

<b>CUSTOMER APPROVAL REQUIRED</b>	
APPROVED BY	
DATE	

FOR QUOTATION PURPOSE ONLY



**SECTION B-B  
SCALE 1 : 1.8**



DIN 69871 AD/B  
(SK40)

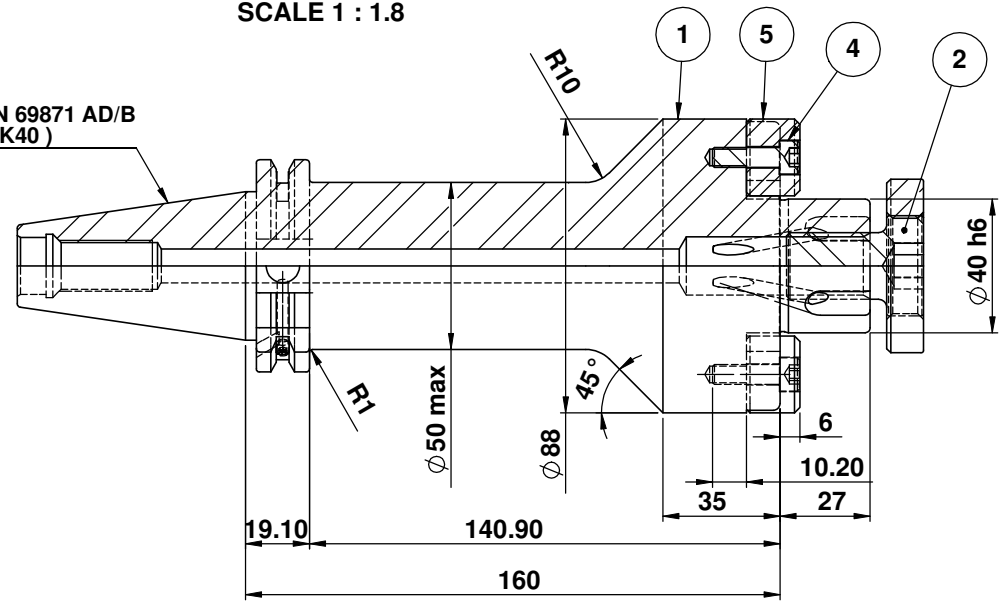


TABLE :

**2002367.4002  
AUFSTECKFRASDORN MIT IKZ  
FACE MILL HOLDER COOLANT  
DIN69871 SK40 ADB  
AS 40mm X 160mm  
G2.5/ 25000 U/min**

MARKING :

**DIN 69871 AD/B SK40 A40 H160  
G2.5 25000 U/min**

**WEIGHT : 4.5 Kg.  
BALANCING 2.5G @ 25000 RPM**

ITEM NO.	DESCRIPTION	PART NUMBER	QTY.
1	FACE MILL HOLDER	SK40 SMS40 160 FTC WW	1
2	CUTTER CLAMPNG SCREW	CCS-M20-40	1
3	GRUB SCREW M4X4	BO	2
4	ALLEN SCREW M6X20	BO	2
5	TENON SPL	TN -FMH40	2

μ m	0.012	0.025	0.05	0.1	0.2	0.4	0.8	1.6	3.2	6.3	12.5	25	50
GRADES	N1	N2	N3	N4	N5	N6	N7	N8	N9	N10	N11	N12	
SYMBOLS	▽▽▽▽▽▽▽▽▽▽▽▽▽												
TOLERANCE	MATERIALS: 2014 NAME DATE												
FREE DIMENSIONS	16MnCr5 DRAWN Bala 17/07												
TOLERANCE	CHECKED RVL 17/07												
Dimns.	Dia	Length	APPROVED										
0.5 to 3	± 0.05	± 0.10	SCALE : NTS QTY. :										
3 to 6	± 0.10	± 0.15	PART NAME: FACE MILL HOLDER										
6 to 30	± 0.15	± 0.20	DRAWING No. SK40 SMS40 160 FTC WW										
30 to 120	± 0.20	± 0.25	REV. 00										
120 to 500	± 0.30	± 0.50											