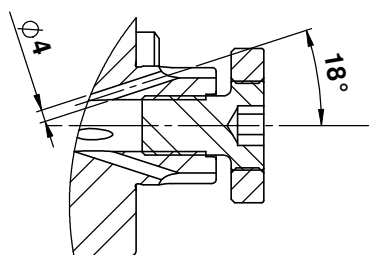
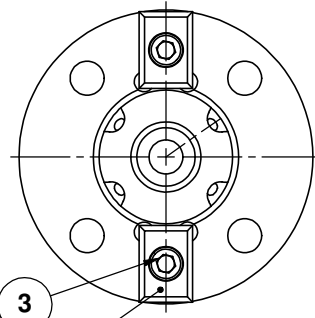
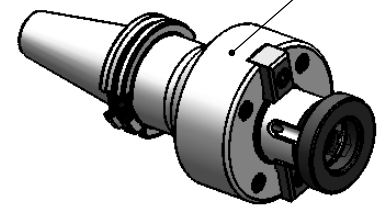


1 2 3 4 5 6 7 8

Rev.No.	Ch.Let	Alterations	Date	Sign.	Appd.

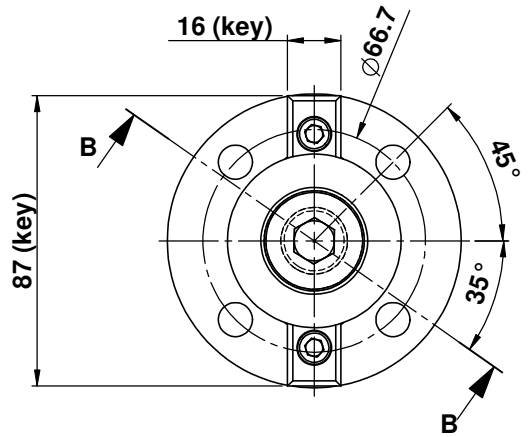
**All Dimensions are in MM**

ALL SILVER LOOK

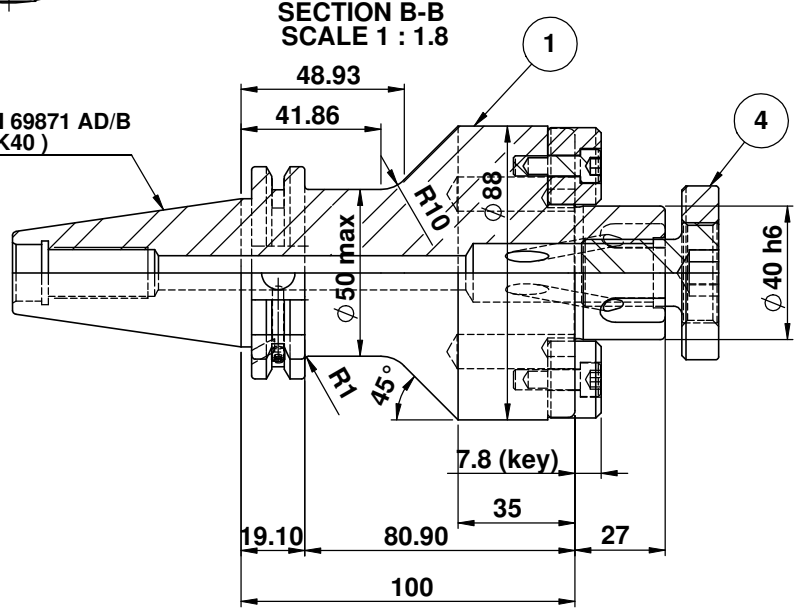


<b>CUSTOMER APPROVAL REQUIRED</b>	
APPROVED BY	
DATE	

FOR QUOTATION PURPOSE ONLY



DIN 69871 AD/B (SK40)



**LABEL :**  
 2002367.4001  
 AUFSTECKFRÄSDORN MIT IKZ  
 FACE MILL HOLDER COOLANT  
 DIN69871 SK40 ADB  
 AS 40mm X 100mm  
 G2.5/ 25000 U/min

**WEIGHT : 3.8 Kg.**  
**BALANCING 2.5G @ 25000 RPM**

**MARKING :**  
 DIN 69871 AD/B SK40 D40 H100 IKZ  
 G2.5 25000 U/min

ITEM NO.	DESCRIPTION	PART NUMBER	QTY.
1	FACE MILL HOLDER	SK40 FMH40 100 FTC WW	1
2	GRUB SCREW M4X4	BO	2
3	ALLEN SCREW M6X20	BO	2
4	CUTTER CLAMPNG SCREW	CCS-M20-40	1
5	DRIVING KEY	KEY 16x23x16 - 40	2

μ m	0.012	0.025	0.05	0.1	0.2	0.4	0.8	1.6	3.2	6.3	12.5	25	50
GRADES	N1	N2	N3	N4	N5	N6	N7	N8	N9	N10	N11	N12	
SYMBOLS	▽▽▽▽▽▽▽▽▽▽▽▽												
TOLERANCE	MATERIALS: 2015 NAME DATE												
FREE DIMENSIONS	16MnCr5 DRAWN MHP 03/01												
TOLERANCE	CHECKED RVL 03/01												
Dimns.	Dia	Length	APPROVED										
0.5 to 3	± 0.05	± 0.10	SCALE : NTS QTY. :										
3 to 6	± 0.10	± 0.15	<b>PART NAME: FACE MILL HOLDER</b> <b>DRAWING No. SK40 FMH40 100 FTC WW</b> REV. 00										
6 to 30	± 0.15	± 0.20											
30 to 120	± 0.20	± 0.25											
120 to 500	± 0.30	± 0.50											

1 2 3 4 5 6 7 8