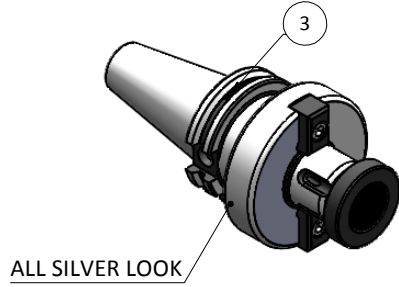
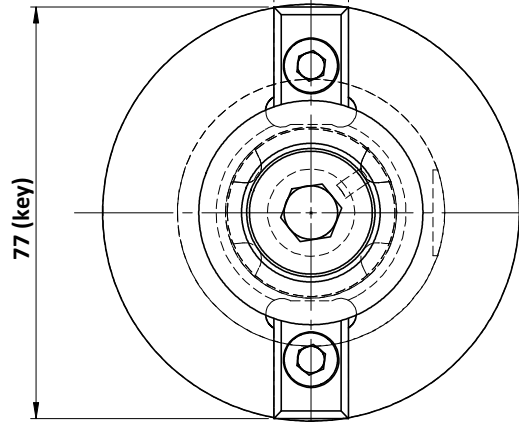


All Dimensions are in MM

Rev.No.	Ch.Let	Alterations	Date	Sign.	Appd.



14h11 (key)



DIN 69871 AD/B (SK40)

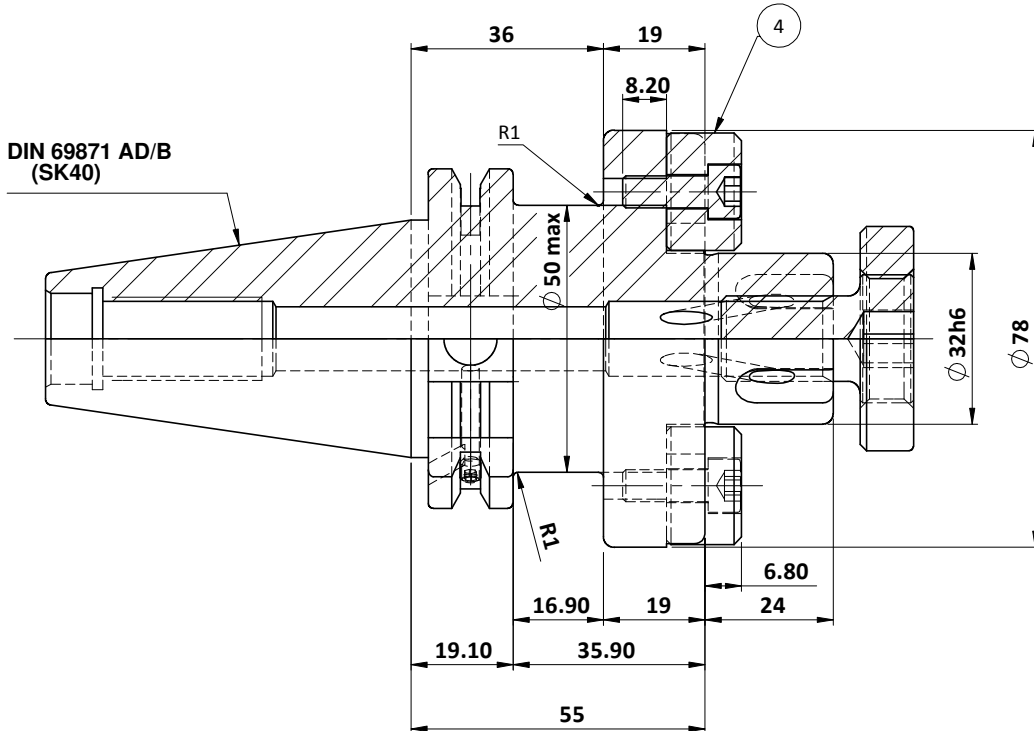


TABLE :
 2002367.3200
 AUFSTECKFRÄSDORN MIT IKZ
 FACE MILL HOLDER COOLANT
 DIN69871 SK40 ADB
 AS 32mm X055mm
 G2.5/ 25000 1/min

MARKING :
 DIN 69871 AD/B SK40 D32 H055 IKZ
 G2.5 25000 U/min

WEIGHT : 1.8 Kg.
BALANCING 2.5G @ 25000 RPM

ITEM NO.	PART NUMBER	DESCRIPTION	QTY
1	FWS409H-SMX32055	FACE MILL HOLDER	1
2	CCS-M16-32	CUTTER CLAMPING SCREW	1
3	GS-M4X4	GRUB SCREW-(B.O.)	2
4	KEY 14x22x14 - 32	DRIVING KEY	2
5	AS-M6X18	ALLEN SCREW M6X18 (B.O.)	2

μ m	0.012	0.025	0.05	0.1	0.2	0.4	0.8	1.6	3.2	6.3	12.5	25	50
GRADES	N1	N2	N3	N4	N5	N6	N7	N8	N9	N10	N11	N12	
SYMBOLS	▽▽▽▽▽▽▽▽▽▽▽▽												
TOLERANCE FREE DIMENSIONS TOLERANCE	16Mncr5		2015		NAME		DATE		2002367.3200				
Dimns.	Dia	Length	DRAWN	Bala	01/07								
0.5 to 3	± 0.05	± 0.10	CHECKED	RVL	01/07								
3 to 6	± 0.10	± 0.15	APPROVED	-									
6 to 30	± 0.15	± 0.20	SCALE : NTS QTY. :		PART NAME:		DRAWING No.		REV.				
30 to 120	± 0.20	± 0.25	SK40 SMS32 055 FTC WW		FWS409H-SMX32055		00						
120 to 500	± 0.30	± 0.50											