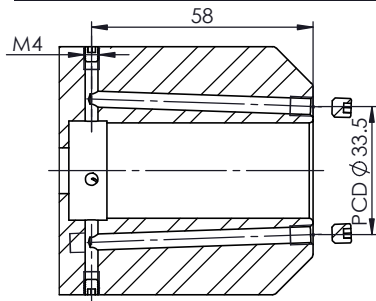
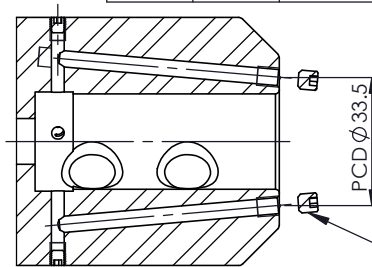


All Dimensions are in MM



SECTION B-B

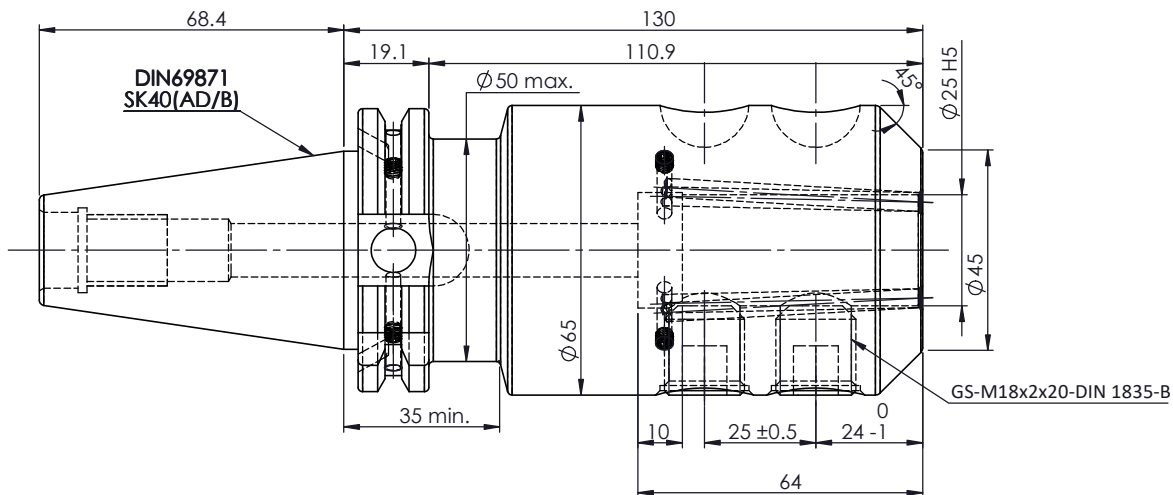
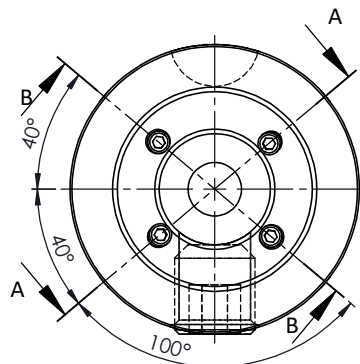


SECTION A-A

For Customer Approval

SCREWS TO BE PACKED SEPERATELY
IN PLASTIC POUCH WITH LABEL & PUT INTO
WELDON BORE & THEN SEAL THE HOLDER WITH COVER

LABEL FOR PLASTIC BAGS:
Verschlusschraube
Grub Screw
M5 X 5mm x 2.5mm



LABEL :

2002306.2505
WELDON-AUFNAHME MIT KK
WELD.HOLDER COOL.CHANNEL
ISO 7388-1 (DIN69871) SK40 AD/AF (AD+B)
WK 25 mm x 130 mm
G2.5 25000 U/MIN

MARKING : ISO 7388-1 (DIN69871) SK40 AD/AF (AD+B) WK25 H130
G2.5 25000 U/MIN

NOTE :

BALANCING 2.5G AT 25000 RPM

WEIGHT :3.0 Kg

ITEM NO.	PART NUMBER	DESCRIPTION	QTY.
1	FWS409H-EKH25130	SK40EK25130FWW	1
2	GS-M18X20X2-DIN1835-B	GRUB SCREW	2
3	GS-M5X5-COATING	GRUB SCREW	4
4	GS-M4X4	GRUB SCREW	4
5	GS-M4X4-COATING	GRUB SCREW	2

	μ m	0.012	0.025	0.05	0.1	0.2	0.4	0.8	1.6	3.2	6.3	12.5	25	50	
GRADES		N1	N2	N3	N4	N5	N6	N7	N8	N9	N10	N11	N12		
SYMBOLS		▽▽▽	▽▽	▽	▽	▽	▽	▽	▽	▽	▽	▽	▽	~	
TOLERANCE FREE DIMENSIONS		2023		NAME		DATE		2002306.2505							
TOLERANCE		16MnCr5		DRAWN		SVR									
Dimns.	Dia	Length	CHECKED		RVL		09/12								
0.5 to 3	± 0.05	± 0.10	APPROVED				09/12								
3 to 6	± 0.10	± 0.15	SCALE : NTS		QTY. :										
6 to 30	± 0.15	± 0.20	PART NAME:		DRAWING No.										
30 to 120	± 0.20	± 0.25	SK40EK25130FWW		FWS409H-EKH25130										
120 to 500	± 0.30	± 0.50			REV.										
					00										