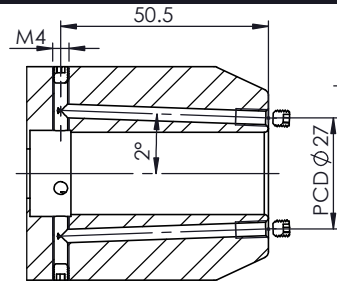
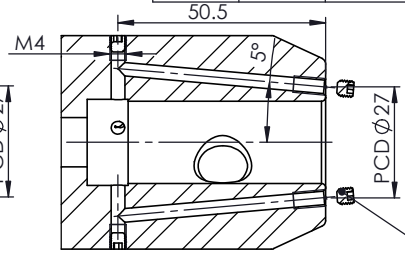


All Dimensions are in MM



SECTION B-B

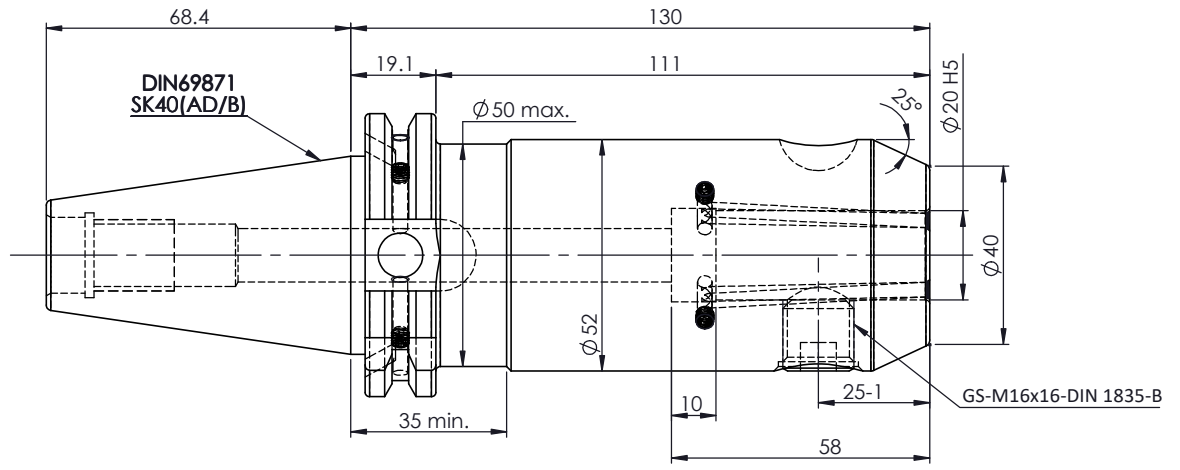
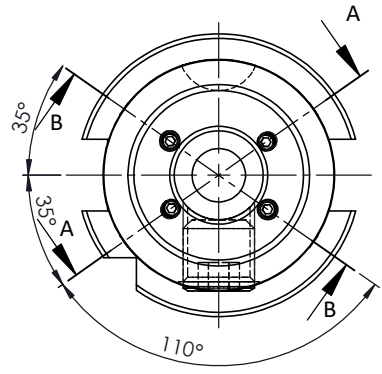


SECTION A-A

For Customer Approval

SCREWS TO BE PACKED SEPERATELY IN PLASTIC POUCH WITH LABEL & PUT INTO WELDON BORE & THEN SEAL THE HOLDER WITH COVER

**LABEL FOR PLASTIC BAGS:
Verschlusschraube
Grub Screw
M4 X 4mm x 2mm**



LABEL :
2002306.2005
WELDON-AUFNAHME MIT KK
WELD.HOLDER COOL.CHANNEL
ISO 7388-1 (DIN69871) SK40 AD/AF (AD+B)
WK 20 mm x 130 mm
G2.5 25000 U/MIN

**MARKING : ISO 7388-1 (DIN69871) SK40 AD/AF (AD+B) WK20 H130
G2.5 25000 U/MIN**

NOTE :
BALANCING 2.5G AT 25000 RPM

WEIGHT :2.30 kg

ITEM NO.	PART NUMBER	DESCRIPTION	QTY.
1	FWS409H-EKH20130	SK40EK20130FWW	1
2	GS-M16x16-DIN1835-B	GRUB SCREW	1
3	GS-M4X4-COATING	GRUB SCREW	6
4	GS-M4X4	GRUB SCREW	4

	µ m	0.012	0.025	0.05	0.1	0.2	0.4	0.8	1.6	3.2	6.3	12.5	25	50
	GRADES	N1		N2	N3	N4	N5	N6	N7	N8	N9	N10	N11	N12
	SYMBOLS	▽▽▽		▽▽	▽	▽	▽	▽	▽	▽	▽	▽	▽	~
TOLERANCE		FREE DIMENSIONS		TOLERANCE		MATERIALS:		2023	NAME	DATE	2002306.2005			
Dimns.		Dia	Length	16MnCr5		DRAWN	SVR	09/12						
0.5 to 3		± 0.05	± 0.10	CHECKED		RVL	09/12							
3 to 6		± 0.10	± 0.15	APPROVED										
6 to 30		± 0.15	± 0.20	PART NAME:		SCALE : NTS		QTY. :	DRAWING No.		REV.			
30 to 120		± 0.20	± 0.25	SK40EK20130WW					FWS409H-EKH20130		00			
120 to 500		± 0.30	± 0.50											