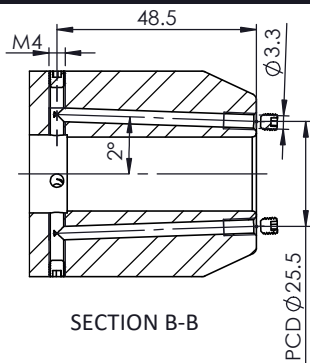
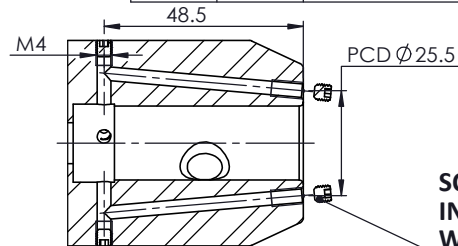


**All Dimensions are in MM**



SECTION B-B

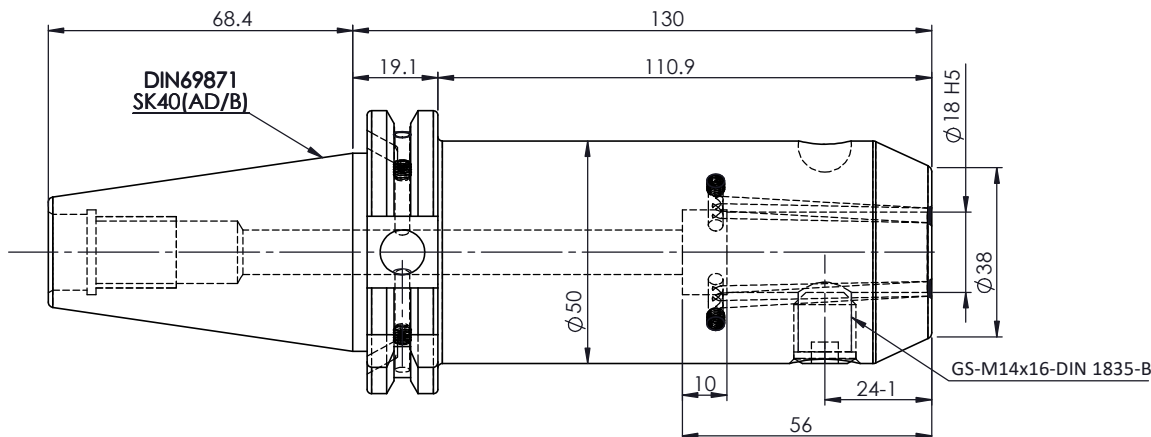
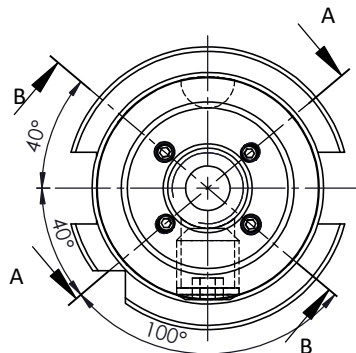


SECTION A-A  
SCALE 1 : 1.3

For Customer Approval

SCREWS TO BE PACKED SEPERATELY  
IN PLASTIC POUCH WITH LABEL & PUT INTO  
WELDON BORE & THEN SEAL THE HOLDER WITH COVER

**LABEL FOR PLASTIC BAGS:**  
Verschlusschraube  
Grub Screw  
M4 X 4mm x 2mm



**LABEL :**

2002306.1805  
WELDON-AUFNAHME MIT KK  
WELD.HOLDER COOL.CHANNEL  
ISO 7388-1 (DIN69871) SK40 AD/AF (AD+B)  
WK 18 mm x 130 mm  
G2.5 25000 U/MIN

**MARKING : ISO 7388-1 (DIN69871) SK40 AD/AF (AD+B) WK18 H130  
G2.5 25000 U/MIN**

**NOTE :**

**BALANCING 2.5G AT 25000 RPM**

**WEIGHT :2.3 Kg**

	µ m	0.012	0.025	0.05	0.1	0.2	0.4	0.8	1.6	3.2	6.3	12.5	25	50
	GRADES	N1	N2	N3	N4	N5	N6	N7	N8	N9	N10	N11	N12	
	SYMBOLS	▽▽▽	▽▽	▽	▽	▽	▽	▽	▽	▽	▽	▽	▽	~

<b>TOLERANCE</b>		<b>MATERIALS:</b>		<b>2023</b>	<b>NAME</b>	<b>DATE</b>	<b>2002306.1805</b>
<b>FREE DIMENSIONS</b>		<b>16MnCr5</b>		<b>DRAWN</b>	<b>SVR</b>	09/12	
<b>TOLERANCE</b>				<b>CHECKED</b>	<b>RVL</b>	09/12	
				<b>APPROVED</b>			
				<b>SCALE : NTS</b>	<b>QTY. :</b>		
<b>PART NAME:</b>						<b>DRAWING No.</b>	
<b>SK40EK18130FWW</b>						<b>FWS409H-EKH18130</b>	
						<b>REV. 00</b>	

ITEM NO.	PART NUMBER	DESCRIPTION	QTY.
1	FWS409H-EKH18130	SK40EK18130FWW	1
2	GS-M14X16-DIN1835-B	GRUB SCREW	1
3	GS-M4X4-COATING	GRUB SCREW	6
4	GS-M4X4	GRUB SCREW	4