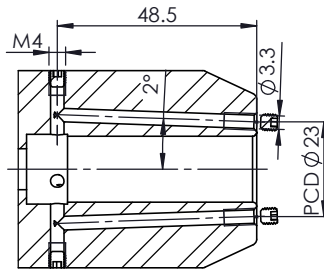
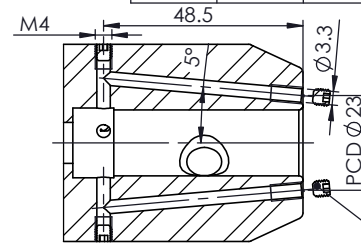


All Dimensions are in MM



SECTION B-B

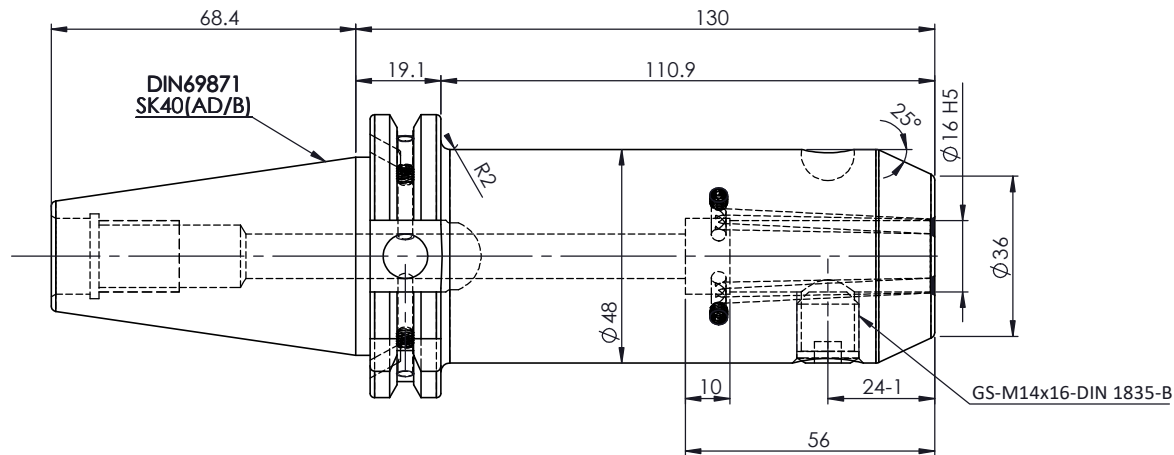
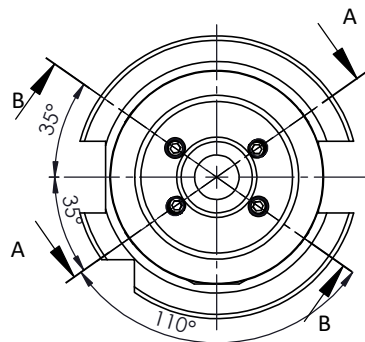


SECTION A-A

For Customer Approval

SCREWS TO BE PACKED SEPERATELY
IN PLASTIC POUCH WITH LABEL & PUT INTO
WELDON BORE & THEN SEAL THE HOLDER WITH COVER

LABEL FOR PLASTIC BAGS:
Verschlusschraube
Grub Screw
M4 X 4mm x 2mm



LABEL :

2002306.1605
WELDON-AUFNAHME MIT KK
WELD.HOLDER COOL.CHANNEL
ISO 7388-1 (DIN69871) SK40 AD/AF (AD+B)
WK 16 mm x 130 mm
G2.5 25000 U/MIN

MARKING : ISO 7388-1 (DIN69871) SK40 AD/AF (AD+B) WK16 H130
G2.5 25000 U/MIN

NOTE :

BALANCING 2.5G AT 25000 RPM

WEIGHT :2.2 Kg

	µ m	0.012	0.025	0.05	0.1	0.2	0.4	0.8	1.6	3.2	6.3	12.5	25	50
	GRADES	N1	N2	N3	N4	N5	N6	N7	N8	N9	N10	N11	N12	
	SYMBOLS	▽▽▽			▽▽			▽			~			

TOLERANCE	MATERIALS:	2023	NAME	DATE	2002306.1605
FREE DIMENSIONS	16MnCr5	DRAWN	SVR	09/12	
TOLERANCE		CHECKED	RVL	09/12	
		APPROVED			
Dimns.	Dia	Length	SCALE : NTS QTY. :		DRAWING No. FWS409H-EKH16130
0.5 to 3	± 0.05	± 0.10			
3 to 6	± 0.10	± 0.15			
6 to 30	± 0.15	± 0.20			
30 to 120	± 0.20	± 0.25			
120 to 500	± 0.30	± 0.50			REV. 00

ITEM NO.	PART NUMBER	DESCRIPTION	QTY.
1	FWS409H-EKH16130	SK40EK16130FWW	1
2	GS-M14X16-DIN1835-B	GRUB SCREW	1
3	GS-M4X4-COATING	GRUB SCREW	6
4	GS-M4X4	GRUB SCREW	4

PART NAME:
SK40EK16130FWW