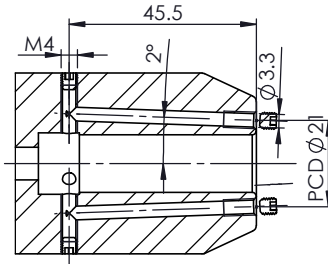
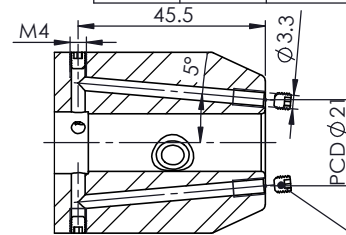


All Dimensions are in MM



SECTION B-B

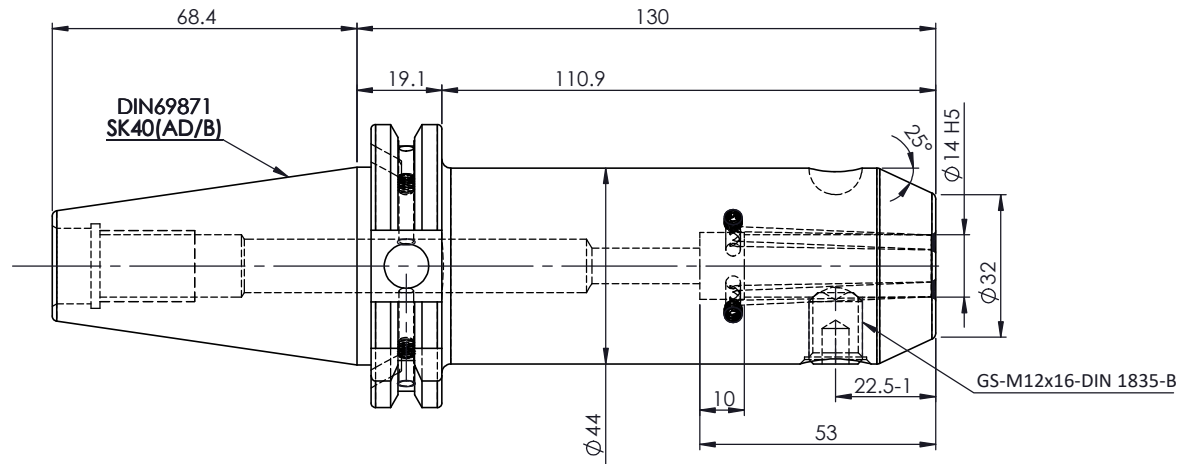
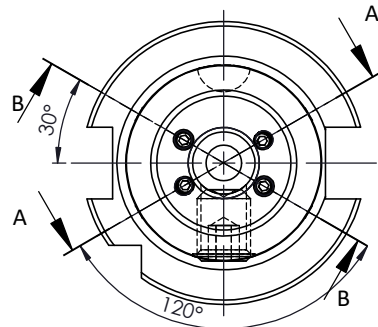


SECTION A-A

For Customer Approval

**SCREWS TO BE PACKED SEPERATELY
IN PLASTIC POUCH WITH LABEL & PUT INTO
WELDON BORE & THEN SEAL THE HOLDER WITH COVER**

**LABEL FOR PLASTIC BAGS:
Verschlusschraube
Grub Screw
M4 X 4mm x 2mm**



LABEL :

**2002306.1405
WELDON-AUFNAHME MIT KK
WELD.HOLDER COOL.CHANNEL
ISO 7388-1 (DIN69871) SK40 AD/AF (AD+B)
WK 14 mm x 130 mm
G2.5 25000 U/MIN**

**MARKING : ISO 7388-1 (DIN69871) SK40 AD/AF (AD+B) WK14 H130
G2.5 25000 U/MIN**

NOTE :

BALANCING 2.5G AT 25000 RPM

WEIGHT :1.90 Kg

		μ m	0.012	0.025	0.05	0.1	0.2	0.4	0.8	1.6	3.2	6.3	12.5	25	50
		GRADES	N1	N2	N3	N4	N5	N6	N7	N8	N9	N10	N11	N12	
		SYMBOLS	▽▽▽			▽▽▽			▽▽			▽			~
TOLERANCE		MATERIALS:		2023		NAME		DATE		2002306.1405					
FREE DIMENSIONS		16MnCr5		DRAWN		SVR		09/12							
TOLERANCE				CHECKED		RVL		09/12							
				APPROVED											
				SCALE : NTS		QTY. :									
				PART NAME:		DRAWING No.		REV.							
				SK40EK14130FWW		FWS409H-EKH14130		00							

ITEM NO.	PART NUMBER	DESCRIPTION	QTY.
1	FWS409H-EKH14130	SK40EK14130FWW	1
2	GS-M12X16	GRUB SCREW	1
3	GS-M4X4-COATING	GRUB SCREW	6
4	GS-M4X4	GRUB SCREW	4