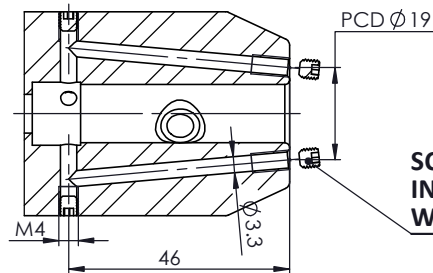
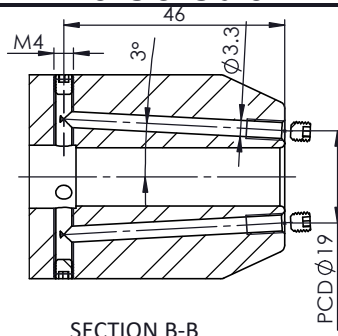
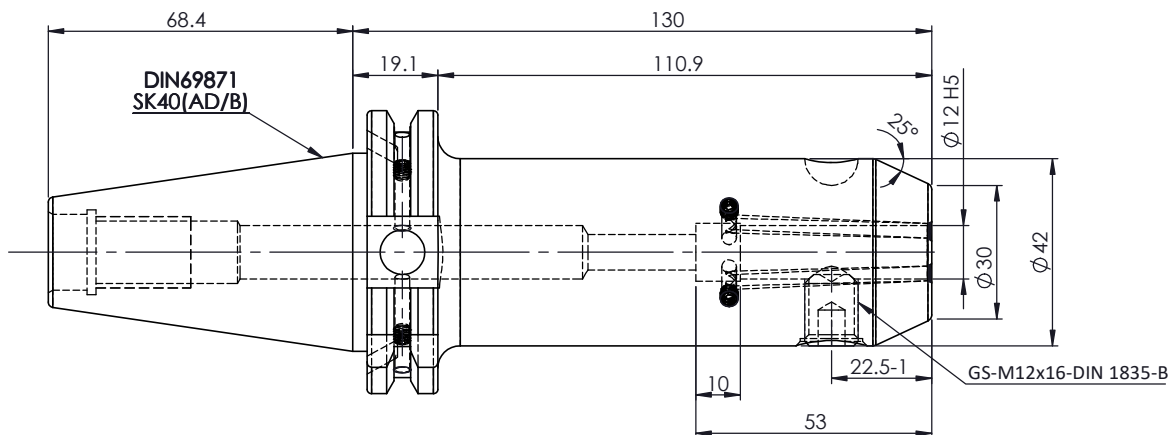
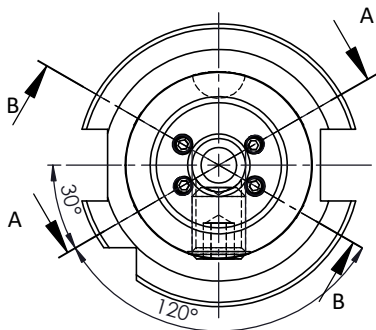


All Dimensions are in MM



For Customer Approval

SCREWS TO BE PACKED SEPERATELY
IN PLASTIC POUCH WITH LABEL & PUT INTO
WELDON BORE & THEN SEAL THE HOLDER WITH COVER
LABEL FOR PLASTIC BAGS:
Verschlusschraube
Grub Screw
M4 X 4mm x 2mm



LABEL :
2002306.1205
WELDON-AUFNAHME MIT KK
WELD.HOLDER COOL.CHANNEL
ISO 7388-1 (DIN69871) SK40 AD/AF (AD+B)
WK 12 mm x 130 mm
G2.5 25000 U/MIN

NOTE :
BALANCING 2.5G AT 25000 RPM

WEIGHT :1.8 Kg

**MARKING : ISO 7388-1 (DIN69871) SK40 AD/AF (AD+B) WK12 H130
G2.5 25000 U/MIN**

ITEM NO.	PART NUMBER	DESCRIPTION	QTY.
1	FWS409H-EKH12130	SK40EK12130FWW	1
2	GS-M12X16	GRUB SCREW	1
3	GS-M4X4	GRUB SCREW	4
4	GS-M4X4-COATING	GRUB SCREW	6

	µ m	0.012	0.025	0.05	0.1	0.2	0.4	0.8	1.6	3.2	6.3	12.5	25	50
	GRADES	N1	N2	N3	N4	N5	N6	N7	N8	N9	N10	N11	N12	
	SYMBOLS	▽▽▽			▽▽▽			▽▽			▽		~	
TOLERANCE		MATERIALS:		2023		NAME		DATE		2002306.1205				
FREE DIMENSIONS		16MnCr5		DRAWN		SVR		09/12						
TOLERANCE				CHECKED		RVL		09/12						
				APPROVED										
Dimns.	Dia	Length	PART NAME:		SCALE :		QTY. :		DRAWING No. FWS409H-EKH12130					
0.5 to 3	± 0.05	± 0.10	SK40EK12130FWW		NTS									REV. 00
3 to 6	± 0.10	± 0.15												
6 to 30	± 0.15	± 0.20												
30 to 120	± 0.20	± 0.25												
120 to 500	± 0.30	± 0.50												