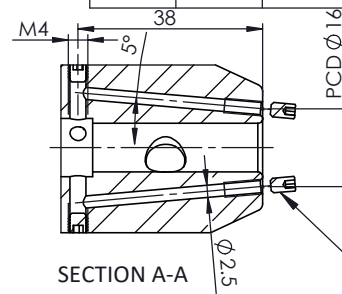
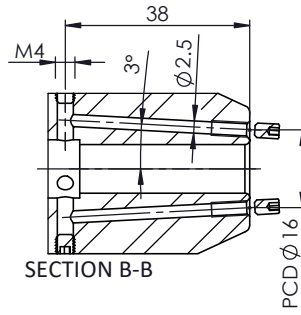


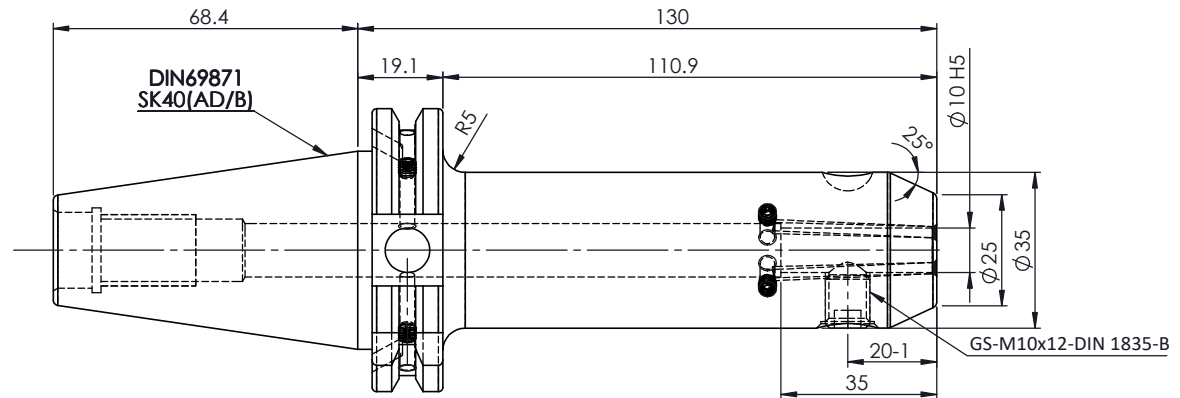
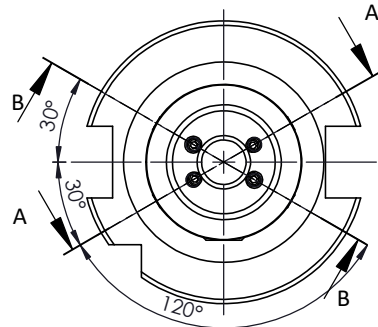
All Dimensions are in MM



For Customer Approval

SCREWS TO BE PACKED SEPERATELY
IN PLASTIC POUCH WITH LABEL & PUT INTO
WELDON BORE & THEN SEAL THE HOLDER WITH COVER

LABEL FOR PLASTIC BAGS:
Verschlusschraube
Grub Screw
M4 X 4mm x 2mm



LABEL :

2002306.1005
WELDON-AUFNAHME MIT KK
WELD.HOLDER COOL.CHANNEL
ISO 7388-1 (DIN69871) SK40 AD/AF (AD+B)
WK 10 mm x 130 mm
G2.5 25000 U/MIN

**MARKING : ISO 7388-1 (DIN69871) SK40 AD/AF (AD+B) WK10 H130
G2.5 25000 U/MIN**

NOTE :

BALANCING 2.5G AT 25000 RPM

WEIGHT :1.5 Kg

ITEM NO.	PART NUMBER	DESCRIPTION	QTY.
1	FWS409H-EKH10130	SK40EK10130FWW	1
2	GS- M10x12-DIN1835-B	GRUB SCREW	1
3	GS-M3X5	GRUB SCREW	4
4	GS-M4X4	GRUB SCREW	4
5	GS-M4X4-COATING	GRUB SCREW	2

	μ	m	0.012	0.025	0.05	0.1	0.2	0.4	0.8	1.6	3.2	6.3	12.5	25	50
GRADES			N1	N2	N3	N4	N5	N6	N7	N8	N9	N10	N11	N12	
SYMBOLS			▽▽▽	▽▽	▽	▽	▽	▽	▽	▽	▽	▽	▽	▽	~
TOLERANCE FREE DIMENSIONS	TOLERANCE		MATERIALS:		2023	NAME	DATE	2002306.1005							
Dimns.	Dia	Length	16MnCr5		DRAWN	SVR	09/12								
0.5 to 3	± 0.05	± 0.10			CHECKED	RVL	09/12								
3 to 6	± 0.10	± 0.15			APPROVED										
6 to 30	± 0.15	± 0.20			SCALE : NTS QTY. :				PART NAME:		DRAWING No.		REV.		
30 to 120	± 0.20	± 0.25			SK40EK10130FWW				FWS409H-EKH10130		00				
120 to 500	± 0.30	± 0.50													