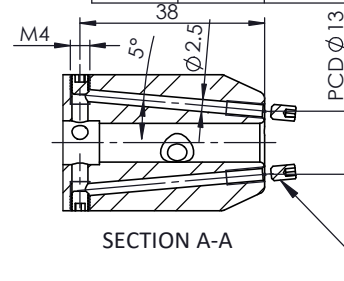
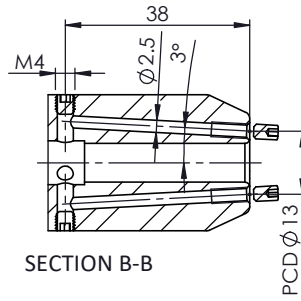


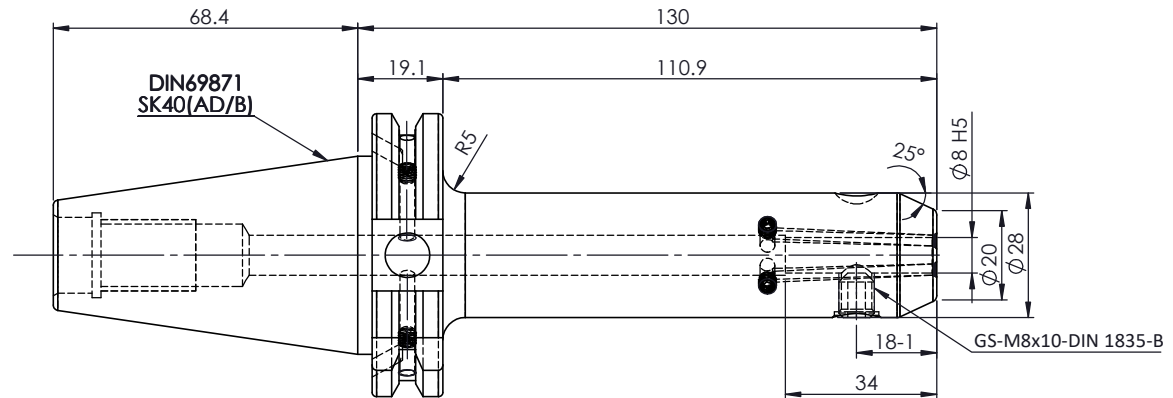
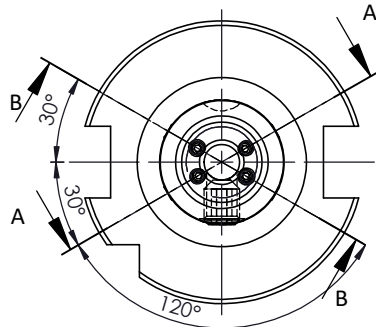
**All Dimensions are in MM**



For Customer Approval

SCREWS TO BE PACKED SEPERATELY  
IN PLASTIC POUCH WITH LABEL & PUT INTO  
WELDON BORE & THEN SEAL THE HOLDER WITH COVER

LABEL FOR PLASTIC BAGS:  
Verschlusschraube  
Grub Screw  
M3 X 5mm x 1.5mm



**LABEL :**  
2002306.0805  
WELDON-AUFNAHME MIT KK  
WELD.HOLDER COOL.CHANNEL  
ISO 7388-1 (DIN69871) SK40 AD/AF (AD+B)  
WK 08 mm x 130 mm  
G2.5 25000 U/MIN

**MARKING : ISO 7388-1 (DIN69871) SK40 AD/AF (AD+B) WK08 H130  
G2.5 25000 U/MIN**

**NOTE :**  
BALANCING 2.5G AT 25000 RPM

**WEIGHT :1.3 Kg**

| ITEM NO. | PART NUMBER        | DESCRIPTION     | QTY. |
|----------|--------------------|-----------------|------|
| 1        | FWS409H-EKH08130   | SK40EK08130FWW  | 1    |
| 2        | GS-M8X10-DIN1835-B | GRUB SCREW(B.O) | 1    |
| 3        | GS-M3X5            | GRUB SCREW      | 4    |
| 4        | GS-M4X4            | GRUB SCREW      | 4    |
| 5        | GS-M4X4-COATING    | GRUB SCREW      | 2    |

|                           | μ m    | 0.012   | 0.025 | 0.05           | 0.1 | 0.2  | 0.4 | 0.8              | 1.6 | 3.2 | 6.3 | 12.5 | 25  | 50 |
|---------------------------|--------|---------|-------|----------------|-----|------|-----|------------------|-----|-----|-----|------|-----|----|
| GRADES                    |        | N1      | N2    | N3             | N4  | N5   | N6  | N7               | N8  | N9  | N10 | N11  | N12 |    |
| SYMBOLS                   |        | ▽▽▽     | ▽▽    | ▽              | ▽   | ▽    | ▽   | ▽                | ▽   | ▽   | ▽   | ▽    | ▽   | ~  |
| TOLERANCE FREE DIMENSIONS |        | 2023    |       | NAME           |     | DATE |     |                  |     |     |     |      |     |    |
| TOLERANCE                 |        | 16MnCr5 |       | DRAWN          |     | SVR  |     | 09/12            |     |     |     |      |     |    |
| Dimns.                    | Dia    | Length  |       | CHECKED        |     | RVL  |     | 09/12            |     |     |     |      |     |    |
| 0.5 to 3                  | ± 0.05 | ± 0.10  |       | APPROVED       |     |      |     |                  |     |     |     |      |     |    |
| 3 to 6                    | ± 0.10 | ± 0.15  |       | SCALE :        |     | NTS  |     | QTY. :           |     |     |     |      |     |    |
| 6 to 30                   | ± 0.15 | ± 0.20  |       | PART NAME:     |     |      |     | DRAWING No.      |     |     |     |      |     |    |
| 30 to 120                 | ± 0.20 | ± 0.25  |       | SK40EK08130FWW |     |      |     | FWS409H-EKH08130 |     |     |     |      |     |    |
| 120 to 500                | ± 0.30 | ± 0.50  |       |                |     |      |     | REV. 00          |     |     |     |      |     |    |

**2002306.0805**