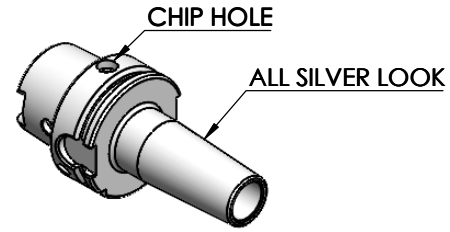


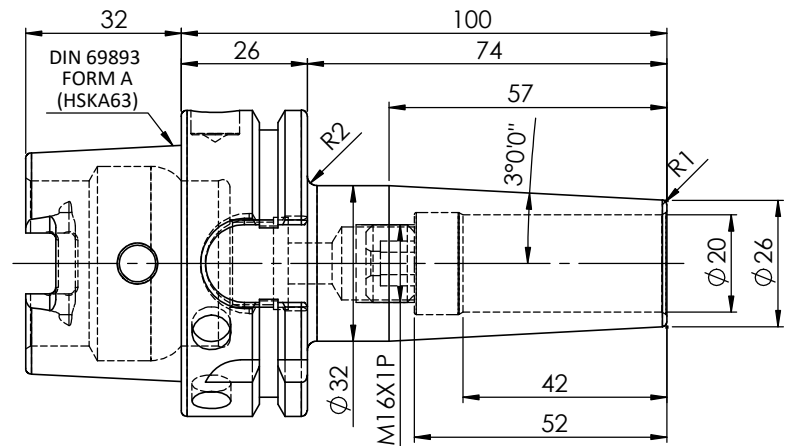
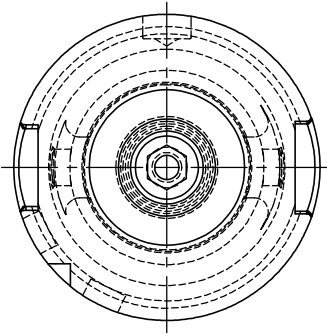
**All Dimensions are in MM**

Rev.No.	Ch.Let	Alterations	Date	Sign.	Appd.

**For Customer Approval**



A  
B  
C  
D  
E  
F



**LABEL:**

**2002275.2000**  
**SCHRUMPFUTTER SCHLANK 3°**  
**SHRINK FIT HOLDER SLIM 3°**  
**DIN 69893 HSK063A**  
**SRS 20mm X 100mm**  
**G2.5/25000 U/MIN**

**MARKING: DIN 69893 A HSK63A SFHS20 H100**  
**G2.5 25000 U/MIN**

Notes	
Balancing Value	G2.5 @25000 RPM
Approx Weight	0.90Kg

TOLERANCE	µ m	0.012	0.025	0.05	0.1	0.2	0.4	0.8	1.6	3.2	6.3	12.5	25	50		
		GRADES	N1	N2	N3	N4	N5	N6	N7	N8	N9	N10	N11	N12		
FREE DIMENSIONS																
TOLERANCE																
Dimns.	Dia	Length	SYMBOLS													
0.5 to 3	± 0.05	± 0.10	▽▽▽▽▽▽▽▽▽▽▽▽▽▽▽													
3 to 6	± 0.10	± 0.15	▽▽▽▽▽▽▽▽▽▽▽▽▽▽▽													
6 to 30	± 0.15	± 0.20	▽▽▽▽▽▽▽▽▽▽▽▽▽▽▽													
30 to 120	± 0.20	± 0.25	▽▽▽▽▽▽▽▽▽▽▽▽▽▽▽													
120 to 500	± 0.30	± 0.50	▽▽▽▽▽▽▽▽▽▽▽▽▽▽▽													
TOLERANCE			MATERIALS:			NAME		DATE		<b>2002275.2000</b>						
FREE DIMENSIONS			HDS			DRAWN		YK							03/09	
TOLERANCE			HDS			CHECKED		RVL							03/09	
TOLERANCE			HDS			APPROVED		SCALE : NTS							QTY. :	
PART NAME:			DRAWING No.					REV.								
HSKA63SFS20100WW			FWA063H-SFS20100					00								

ITEM NO.	PART NUMBER	DESCRIPTION	QTY.
2	SCWM16X1X10	STOPPER SCREW (B.O.)	1
1	FWA063H-SFS20100	HSKA63SFS20100WW	1

1 2 3 4 5 6 7 8