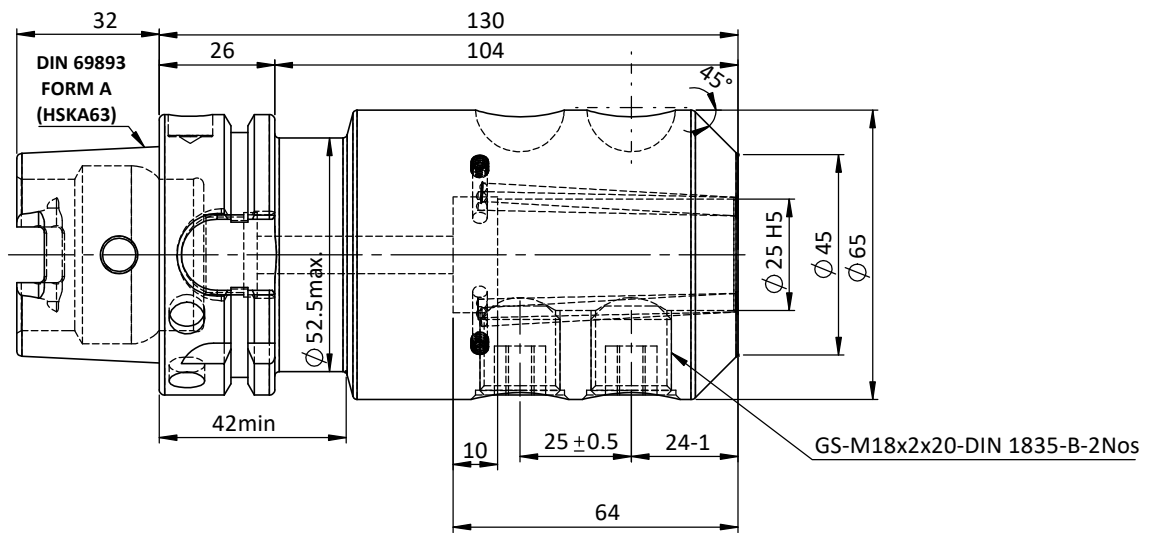
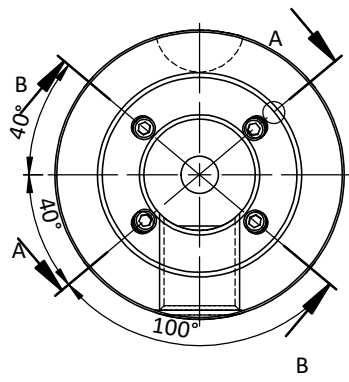
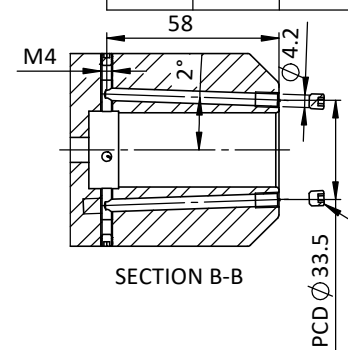
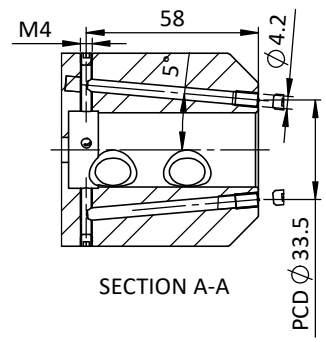
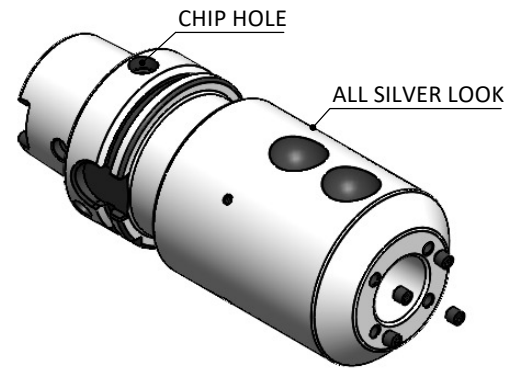


Rev.No.	Ch.Let	Alterations			Date	Sign.	Appd.

**All Dimensions are in MM**

For Customer Approval

SCREWS TO BE PACKED SEPERATELY  
IN PLASTIC POUCH WITH LABEL & PUT INTO  
WELDON BORE & THEN SEAL THE HOLDER WITH COVER  
LABEL FOR PLASTIC BAGS:  
Verschlusschraube  
Grub Screw  
M5 X 5mm x 2.5mm



**LABEL :**  
2002271.2505  
WELDON-AUFNAHME MIT KK  
WELD.HOLDER COOL.CHANNEL  
DIN69893 HSK63A  
WK 25 mm x 130 mm  
G2.5 25000 U/MIN

**MARKING : DIN 69893 A HSK63A WK25 H130  
G2.5 25000 U/MIN**

**NOTE :**  
BALANCING 2.5G AT 25000 RPM

**WEIGHT :2.7 kg**

ITEM NO.	PART NUMBER	DESCRIPTION	QTY.
1	FWA063H-EKH25130	HSKA63EK25130WW	1
2	GS-M18X20X2-DIN1835-B	GRUB SCREW	2
3	GS-M4X4	GRUB SCREW	4
4	GS-M5X5-COATING	GRUB SCREW	4

μ m	0.012	0.025	0.05	0.1	0.2	0.4	0.8	1.6	3.2	6.3	12.5	25	50
GRADES	N1	N2	N3	N4	N5	N6	N7	N8	N9	N10	N11	N12	
SYMBOLS	▽▽▽▽▽▽▽▽▽▽▽▽▽												
TOLERANCE FREE DIMENSIONS TOLERANCE	2023			NAME		DATE		<b>2002271.2505</b>					
Dimns.	Dia	Length	DRAWN		04/12								
0.5 to 3	± 0.05	± 0.10	CHECKED		RVL 04/12								
3 to 6	± 0.10	± 0.15	APPROVED										
6 to 30	± 0.15	± 0.20	PART NAME:		DRAWING No.		FWA063H-EKH25130						
30 to 120	± 0.20	± 0.25	HSKA63EK25130WW		REV.								
120 to 500	± 0.30	± 0.50			00								