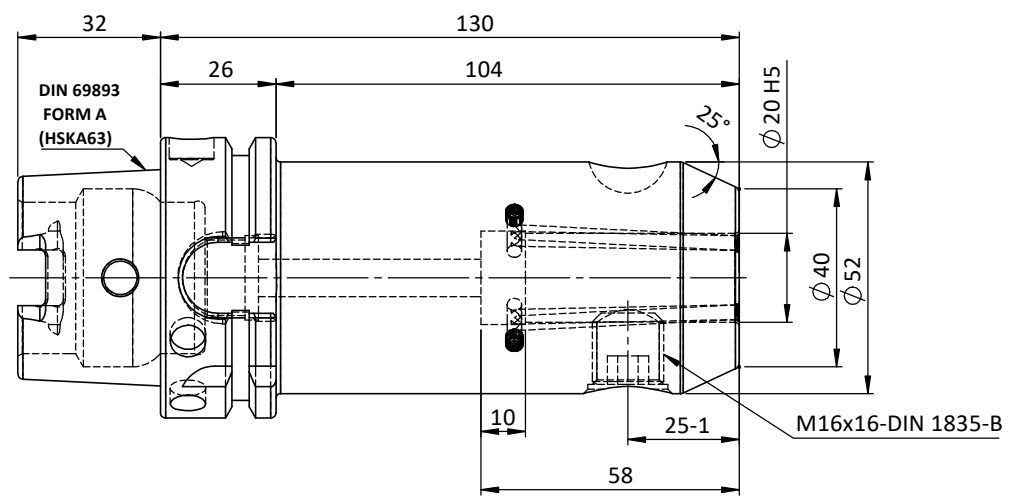
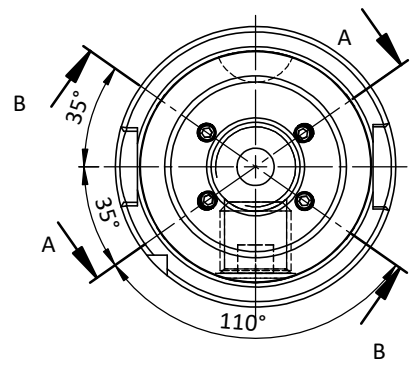
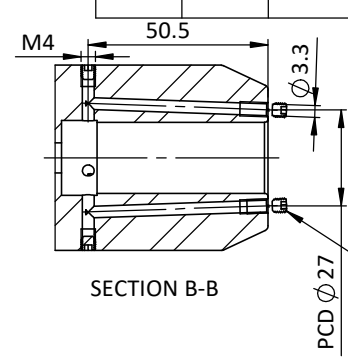
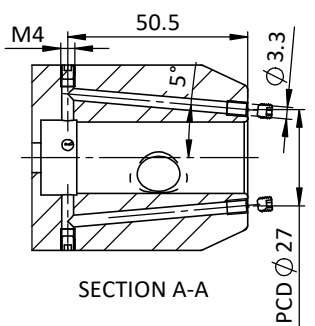
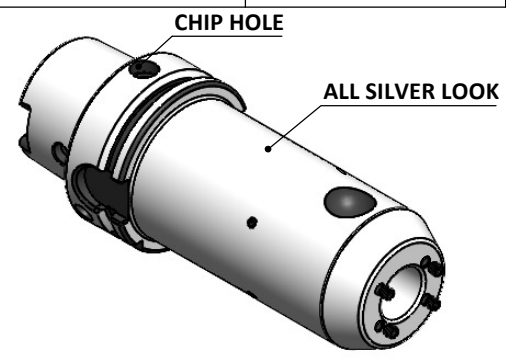


Rev.No.	Ch.Let	Alterations	Date	Sign.	Appd.

For Customer Approval

SCREWS TO BE PACKED SEPERATELY
IN PLASTIC POUCH WITH LABEL & PUT INTO
WELDON BORE & THEN SEAL THE HOLDER WITH COVER
LABEL FOR PLASTIC BAGS:
Verschlusschraube
Grub Screw
M4 X 4mm x 2mm

All Dimensions are in MM



LABEL :
2002271.2005
WELDON-AUFNAHME MIT KK
WELD.HOLDER COOL.CHANNEL
DIN69893 HSK63A
WK 20 mm x 130 mm
G2.5 25000 U/MIN

MARKING : DIN 69893 A HSK63A WK20 H130
G2.5 25000 U/MIN

NOTE :
BALANCING 2.5G AT 25000 RPM

WEIGHT :2.1 kg

µ m	0.012	0.025	0.05	0.1	0.2	0.4	0.8	1.6	3.2	6.3	12.5	25	50
GRADES	N1	N2	N3	N4	N5	N6	N7	N8	N9	N10	N11	N12	
SYMBOLS	▽▽▽			▽▽▽			▽▽			▽			~

TOLERANCE FREE DIMENSIONS TOLERANCE <table border="1"> <tr> <th>Dimns.</th> <th>Dia</th> <th>Length</th> </tr> <tr> <td>0.5 to 3</td> <td>± 0.05</td> <td>± 0.10</td> </tr> <tr> <td>3 to 6</td> <td>± 0.10</td> <td>± 0.15</td> </tr> <tr> <td>6 to 30</td> <td>± 0.15</td> <td>± 0.20</td> </tr> <tr> <td>30 to 120</td> <td>± 0.20</td> <td>± 0.25</td> </tr> <tr> <td>120 to 500</td> <td>± 0.30</td> <td>± 0.50</td> </tr> </table>	Dimns.	Dia	Length	0.5 to 3	± 0.05	± 0.10	3 to 6	± 0.10	± 0.15	6 to 30	± 0.15	± 0.20	30 to 120	± 0.20	± 0.25	120 to 500	± 0.30	± 0.50	MATERIALS: 16MnCr5	2023 DRAWN YSK CHECKED RVL APPROVED	NAME YSK RVL	DATE 04/12 04/12	2002271.2005
	Dimns.	Dia	Length																				
	0.5 to 3	± 0.05	± 0.10																				
	3 to 6	± 0.10	± 0.15																				
6 to 30	± 0.15	± 0.20																					
30 to 120	± 0.20	± 0.25																					
120 to 500	± 0.30	± 0.50																					
PART NAME: HSKA63EK20130WW	DRAWING No. FWA063H-EKH20130	REV. 00																					

ITEM NO.	PART NUMBER	DESCRIPTION	QTY.
1	FWA063H-EKH20130	HSKA63EK20130WW	1
2	GS-M16x16-DIN1835-B	GRUB SCREW	1
3	GS-M4X4	GRUB SCREW	4
4	GS-M4X4-COATING	GRUB SCREW	4