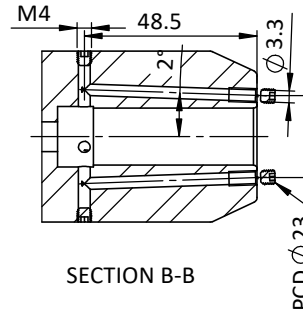
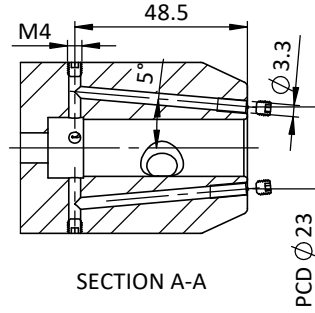


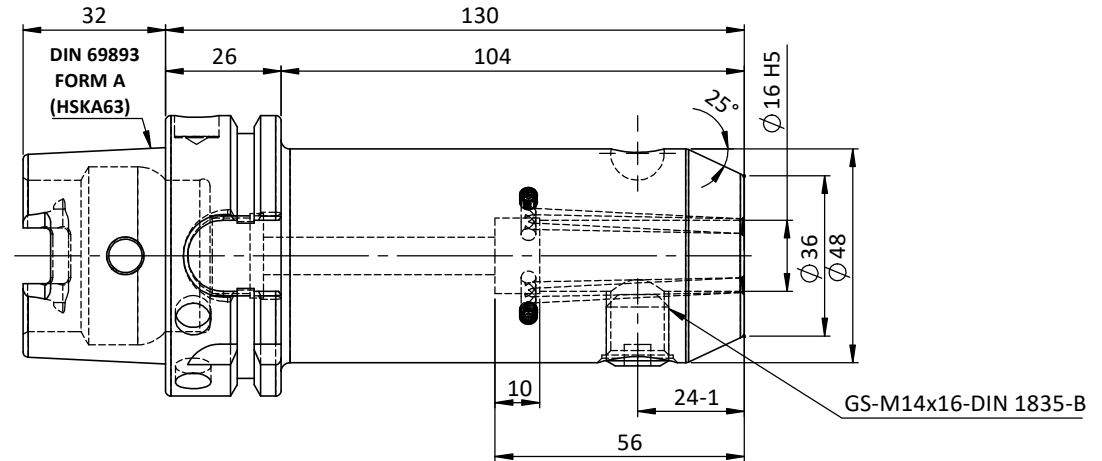
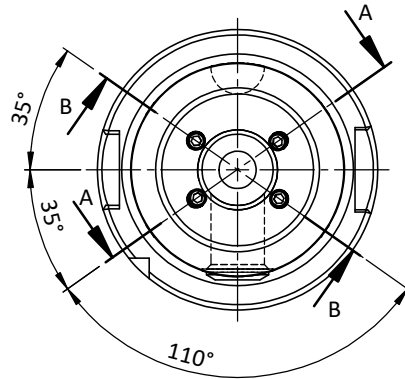
All Dimensions are in MM



For Customer Approval

**SCREWS TO BE PACKED SEPERATELY
IN PLASTIC POUCH WITH LABEL & PUT INTO
WELDON BORE & THEN SEAL THE HOLDER WITH COVER**

**LABEL FOR PLASTIC BAGS:
Verschlusschraube
Grub Screw
M4 X 4mm x 2mm**



LABEL :
2002271.1605
WELDON-AUFNAHME MIT KK
WELD.HOLDER COOL.CHANNEL
DIN69893 HSK63A
WK 16 mm x 130 mm
G2.5 25000 U/MIN

NOTE :
BALANCING 2.5G AT 25000 RPM

WEIGHT :1.9 kg

**MARKING : DIN 69893 A HSK63A WK16 H130
G2.5 25000 U/MIN**

		µ m	0.012	0.025	0.05	0.1	0.2	0.4	0.8	1.6	3.2	6.3	12.5	25	50
		GRADES	N1	N2	N3	N4	N5	N6	N7	N8	N9	N10	N11	N12	
		SYMBOLS	▽▽▽			▽▽▽			▽▽			▽			~
TOLERANCE		MATERIALS:		2023		NAME		DATE		2002271.1605					
FREE DIMENSIONS		16MnCr5		DRAWN		YSK		04/12							
TOLERANCE				CHECKED		RVL		04/12							
				APPROVED											
				SCALE : NTS		QTY. :									
				PART NAME:		DRAWING No.		REV.							
				HSKA63EK16130WW		FWA063H-EKH16130		00							

ITEM NO.	PART NUMBER	DESCRIPTION	QTY.
1	FWA063H-EKH16130	HSKA63EK16130WW	1
2	GS-M14X16-DIN1835-B	GRUB SCREW	1
3	GS-M4X4	GRUB SCREW	4
4	GS-M4X4-COATING	GRUB SCREW	4