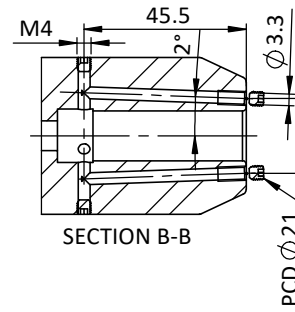
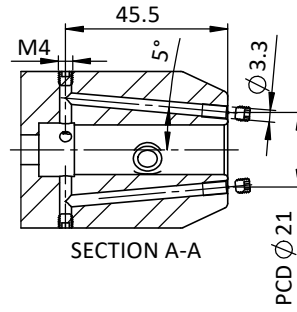
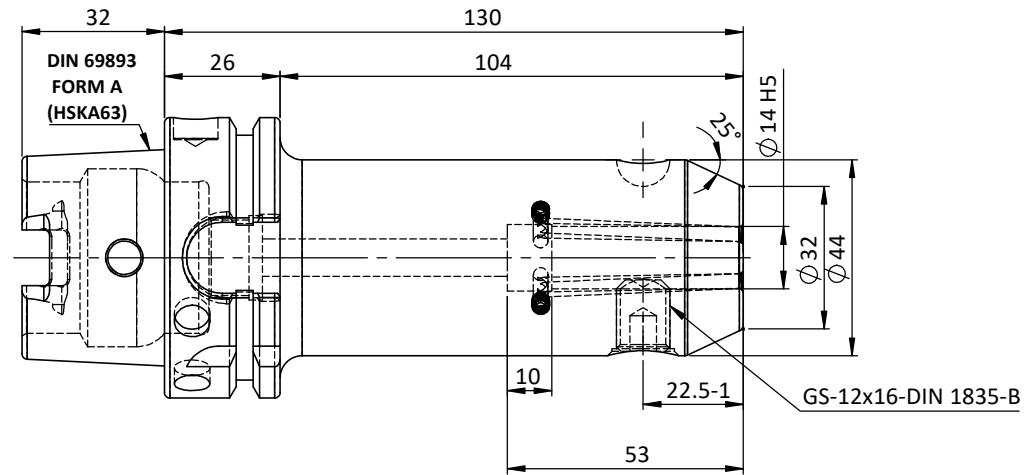
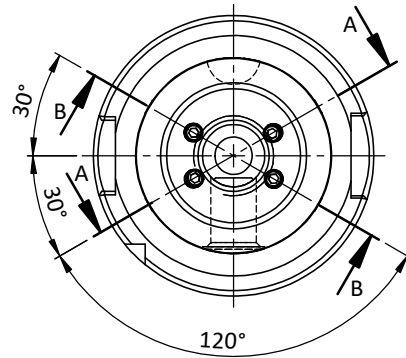


All Dimensions are in MM



For Customer Approval

SCREWS TO BE PACKED SEPARATELY
IN PLASTIC POUCH WITH LABEL & PUT INTO
WELDON BORE & THEN SEAL THE HOLDER WITH COVER
LABEL FOR PLASTIC BAGS:
Verschlusschraube
Grub Screw
M4 X 4mm x 2mm



LABEL :

2002271.1405
WELDON-AUFNAHME MIT KK
WELD.HOLDER COOL.CHANNEL
DIN69893 HSK63A
WK 14 mm x 130 mm
G2.5 25000 U/MIN

**MARKING : DIN 69893 A HSK63A WK14 H130
G2.5 25000 U/MIN**

NOTE :

BALANCING 2.5G AT 25000 RPM

WEIGHT :1.7 kg

ITEM NO.	PART NUMBER	DESCRIPTION	QTY.
1	FWA063H-EKH14130	HSKA63EK14130WW	1
2	GS-M12X16	GRUB SCREW	1
3	GS-M4X4	GRUB SCREW	4
4	GS-M4X4-COATING	GRUB SCREW	4

μ m	0.012		0.025		0.05		0.1		0.2		0.4		0.8		1.6		3.2		6.3		12.5		25		50	
	N1		N2		N3		N4		N5		N6		N7		N8		N9		N10		N11		N12			
GRADES																										
SYMBOLS																										
TOLERANCE																										
FREE DIMENSIONS																										
TOLERANCE																										
Dimns.	Dia	Length																								
0.5 to 3	± 0.05	± 0.10																								
3 to 6	± 0.10	± 0.15																								
6 to 30	± 0.15	± 0.20																								
30 to 120	± 0.20	± 0.25																								
120 to 500	± 0.30	± 0.50																								
MATERIALS:			2023		NAME		DATE		<div style="text-align: center; font-size: 24pt; font-weight: bold;">2002271.1405</div>																	
16MnCr5			DRAWN		YSK		04/12																			
			CHECKED		RVL		04/12																			
			APPROVED																							
PART NAME:			SCALE :		NTS		QTY. :		DRAWING No.																REV.	
HSKA63EK14130WW									FWA063H-EKH14130																00	