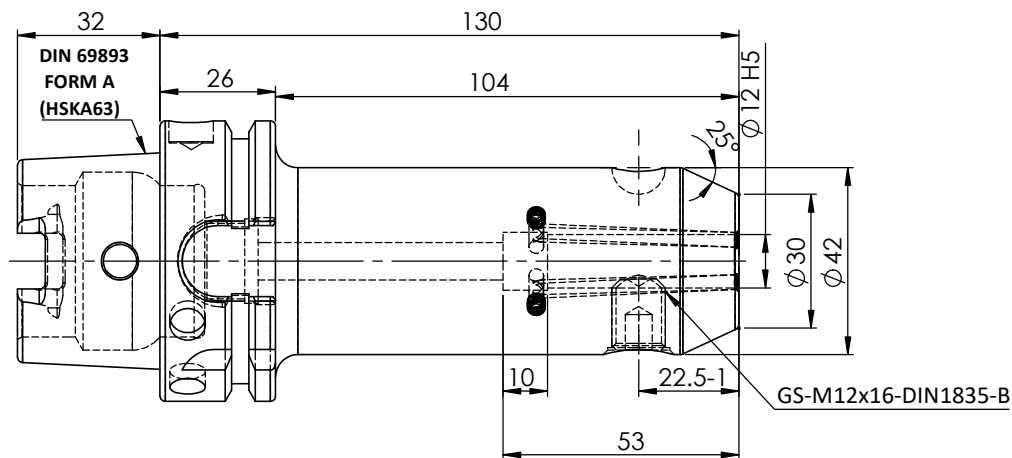
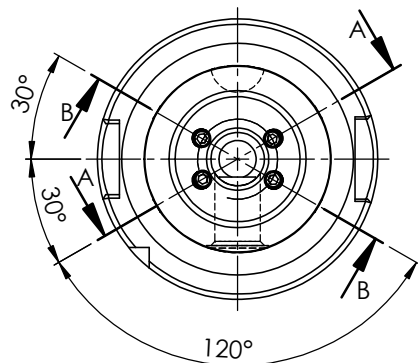
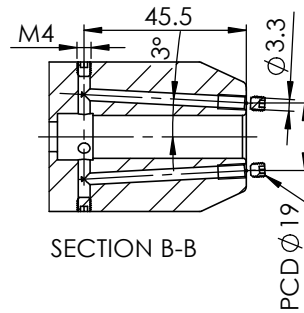
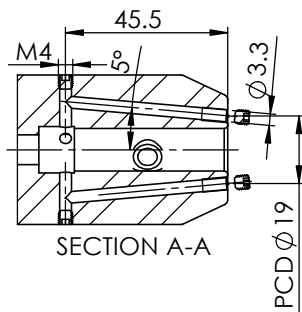
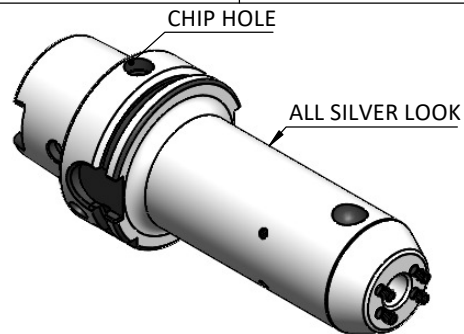


Rev.No.	Ch.Let	Alterations	Date	Sign.	Appd.

All Dimensions are in MM

For Customer Approval

SCREWS TO BE PACKED SEPARATELY
IN PLASTIC POUCH WITH LABEL & PUT INTO
WELDON BORE & THEN SEAL THE HOLDER WITH COVER
LABEL FOR PLASTIC BAGS:
Verschlusschraube
Grub Screw
M4 X 4mm x 2mm



LABEL :
2002271.1205
WELDON-AUFNAHME MIT KK
WELD.HOLDER COOL.CHANNEL
DIN69893 HSK63A
WK 12 mm x 130 mm
G2.5 25000 U/MIN

NOTE :
BALANCING 2.5G AT 25000 RPM

WEIGHT :1.6 Kg

**MARKING : DIN 69893 A HSK63A WK12 H130
G2.5 25000 U/MIN**

μm	0.012	0.025	0.05	0.1	0.2	0.4	0.8	1.6	3.2	6.3	12.5	25	50
GRADES	N1	N2	N3	N4	N5	N6	N7	N8	N9	N10	N11	N12	
SYMBOLS	▽▽▽			▽▽▽			▽▽			▽			~
TOLERANCE FREE DIMENSIONS TOLERANCE	2023		NAME		DATE		2002271.1205						
Dimns.	Dia	Length	DRAWN	YSK	04/12								
0.5 to 3	± 0.05	± 0.10	CHECKED	RVL	04/12								
3 to 6	± 0.10	± 0.15	APPROVED										
6 to 30	± 0.15	± 0.20	SCALE :	NTS	QTY. :	PART NAME:		DRAWING No.				REV.	
30 to 120	± 0.20	± 0.25	HSKA63EK12130WW		FWA063H-EKH12130				00				
120 to 500	± 0.30	± 0.50											

ITEM NO.	PART NUMBER	DESCRIPTION	QTY.
1	FWA063H-EKH12130	HSKA63EK12130WW	1
2	GS-M12X16	GRUB SCREW	1
3	GS-M4X4	GRUB SCREW	4
4	GS-M4X4-COATING	GRUB SCREW	4