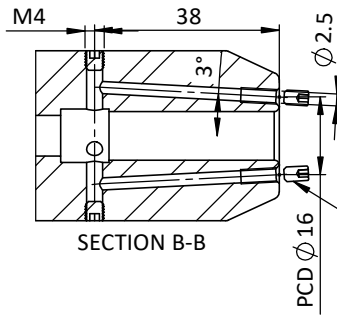
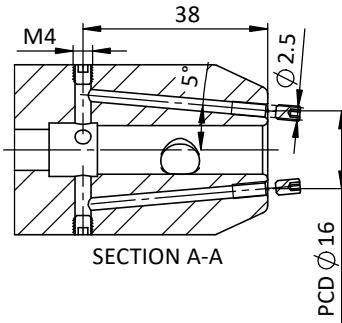
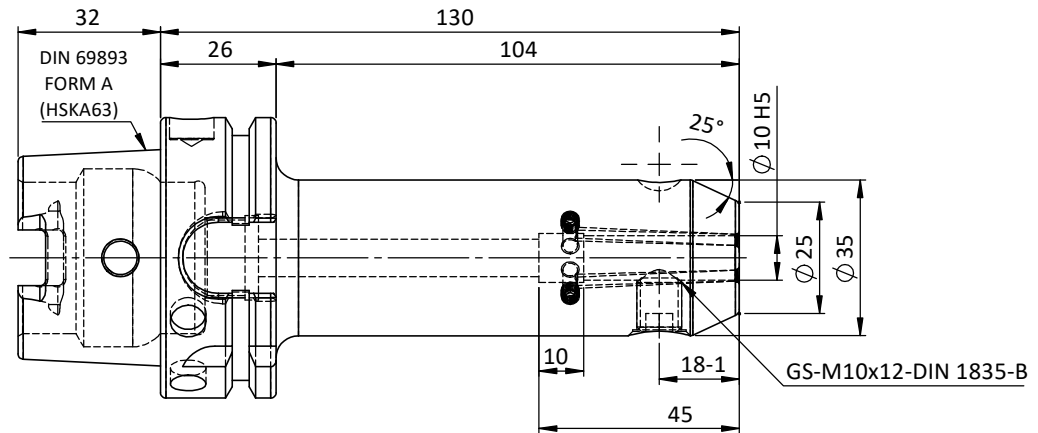
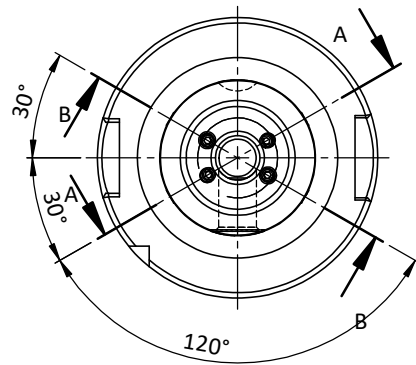


**All Dimensions are in MM**



For Customer Approval

SCREWS TO BE PACKED SEPERATELY  
IN PLASTIC POUCH WITH LABEL & PUT INTO  
WELDON BORE & THEN SEAL THE HOLDER WITH COVER  
LABEL FOR PLASTIC BAGS:  
Verschlusschraube  
Grub Screw  
M3 X 5mmx 1.5mm



**LABEL :**  
2002271.1005  
WELDON-AUFNAHME MIT KK  
WELD.HOLDER COOL.CHANNEL  
DIN69893 HSK63A  
WK 10 mm x 130 mm  
G2.5 25000 U/MIN

**MARKING : DIN 69893 A HSK63A WK10 H130  
G2.5 25000 U/MIN**

**NOTE :**  
BALANCING 2.5G AT 25000 RPM

**WEIGHT :1.3 kg**

		μ m	0.012	0.025	0.05	0.1	0.2	0.4	0.8	1.6	3.2	6.3	12.5	25	50						
		GRADES	N1	N2	N3	N4	N5	N6	N7	N8	N9	N10	N11	N12							
		SYMBOLS	▽▽▽			▽▽▽			▽▽			▽			~						
<b>TOLERANCE FREE DIMENSIONS TOLERANCE</b>		<b>MATERIALS:</b>		<b>2023</b>		<b>NAME</b>		<b>DATE</b>		<b>2002271.1005</b>											
Dimns. Dia Length		16MnCr5		DRAWN		YSK		04/12													
0.5 to 3 ± 0.05 ± 0.10				CHECKED		RVL		04/12													
3 to 6 ± 0.10 ± 0.15				APPROVED																	
6 to 30 ± 0.15 ± 0.20				SCALE :		NTS		QTY. :		<b>HSKA63EK10130WW</b>											
30 to 120 ± 0.20 ± 0.25				<b>PART NAME:</b>												<b>DRAWING No. FWA063H-EKH10130</b>					
120 to 500 ± 0.30 ± 0.50				<b>HSKA63EK10130WW</b>																	

ITEM NO.	PART NUMBER	DESCRIPTION	QTY.
1	FWA063H-EKH10130	HSKA063EK10130WW	1
2	GS-M4X4	GRUB SCREW	4
3	GS-M3X5	GRUB SCREW	4
4	GS- M10x12-DIN1835-B	GRUB SCREW	1