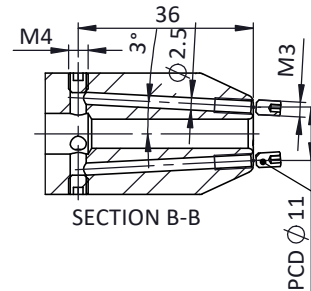
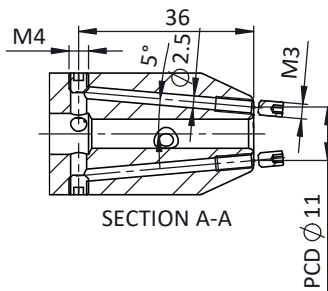
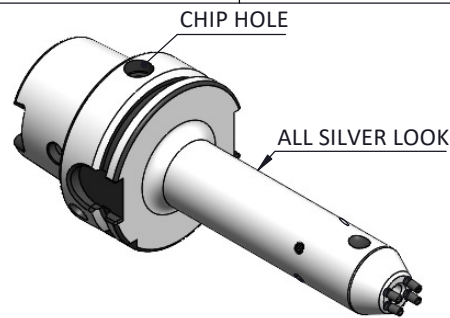


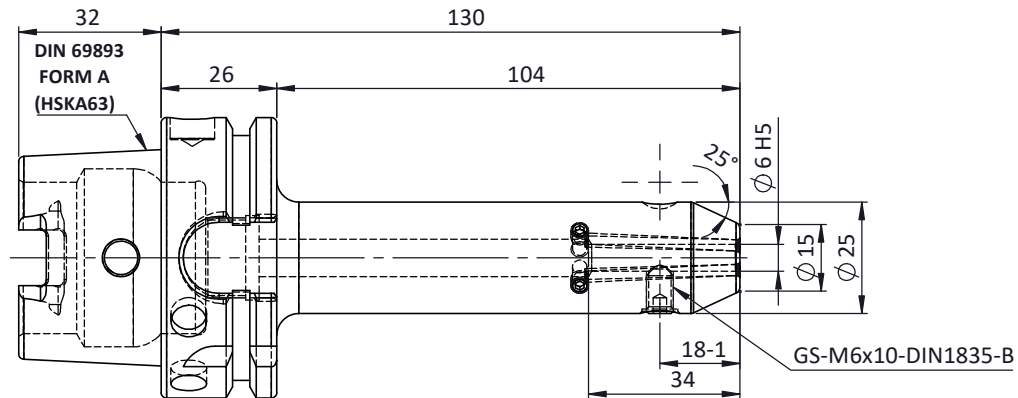
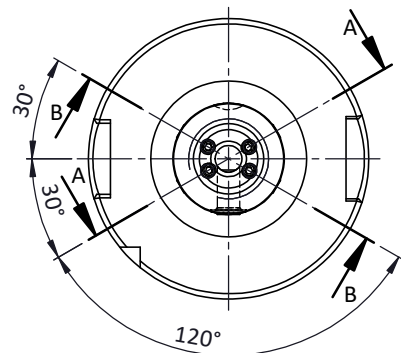
Rev.No.	Ch.Let	Alterations	Date	Sign.	Appd.

All Dimensions are in MM



For Customer Approval

SCREWS TO BE PACKED SEPERATELY
IN PLASTIC POUCH WITH LABEL & PUT INTO
WELDON BORE & THEN SEAL THE HOLDER WITH COVER
LABEL FOR PLASTIC BAGS:
Verschlusschraube
Grub Screw
M3 X 5mm x 1.5mm



LABEL :
2002271.0605
WELDON-AUFNAHME MIT KK
WELD.HOLDER COOL.CHANNEL
DIN69893 HSK63A
WK 06 mm x 130 mm
G2.5 25000 U/MIN

**MARKING : DIN 69893 A HSK63A WK06 H130
G2.5 25000 U/MIN**

Notes	
Balancing Value	G2.5 @25000RPM
Approx Weight	1.00 Kg

ITEM NO.	PART NUMBER	DESCRIPTION	QTY.
4	GS-M3X5	GRUB SCREW	4
3	GS-M4X4	GRUB SCREW-(B.O)	4
2	GS-M6X10-DIN1835-B	GRUB SCREW	1
1	FWA063H-EKH06130	HSKA063EK06130WW	1

μ m	0.012	0.025	0.05	0.1	0.2	0.4	0.8	1.6	3.2	6.3	12.5	25	50											
GRADES	N1		N2		N3		N4		N5		N6		N7		N8		N9		N10		N11		N12	
SYMBOLS	▽▽▽		▽▽▽		▽▽▽		▽▽▽		▽▽▽		▽▽▽		▽▽▽		▽▽▽		▽▽▽		▽▽▽		▽▽▽		▽▽▽	
TOLERANCE		MATERIALS:		2023		NAME		DATE		<h1>2002271.0605</h1>														
FREE DIMENSIONS		16MnCr5		DRAWN		YSK		04/12																
TOLERANCE				CHECKED		RVL		04/12																
				APPROVED																				
Dimns.	Dia	Length			SCALE :		NTS		QTY. :		<h2>HSKA63EK06130WW</h2>													
0.5 to 3	± 0.05	± 0.10																						
3 to 6	± 0.10	± 0.15																						
6 to 30	± 0.15	± 0.20																						
30 to 120	± 0.20	± 0.25							DRAWING No. FWA063H-EKH06130															
120 to 500	± 0.30	± 0.50																			REV. 00			

F

F